

FOR LEASE: OFFICE/RETAIL SPACE, 7TH FLOOR

1701 Walnut St | Rittenhouse Square | Philadelphia, PA

EQUITY CRE



PROPERTY HIGHLIGHTS

- 3,050 SF of office/retail space available
- Entire 7th floor with elevator access
- Office entrance and signage on 17th St
- Elevator lobby with attendant
- Extremely well positioned with proximity to shopping, dining and public transit
- Dramatic architecture and sits on one of the best corners in Rittenhouse
- Neighboring tenants include

VUOR1 Abercrombie & Fitch 

 lululemon  Capital One  alo 

CONTACT

CONOR TUNNO
ctunno@equitycre.com
DIRECT 484.531.2004

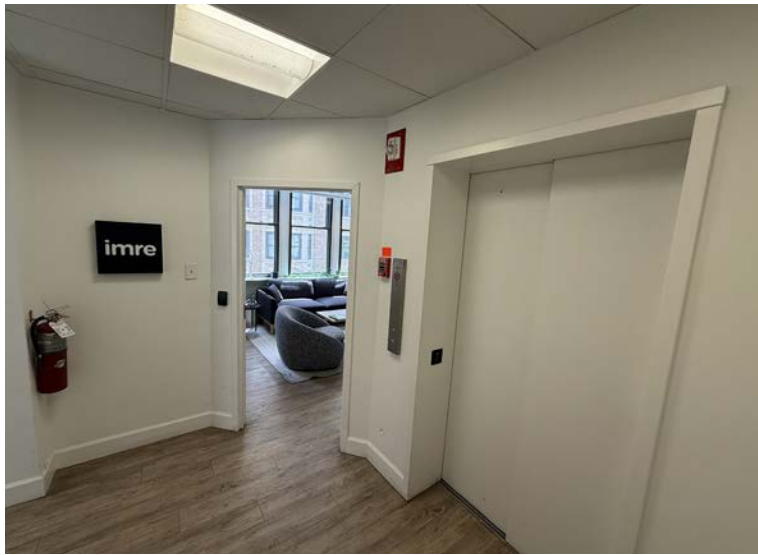
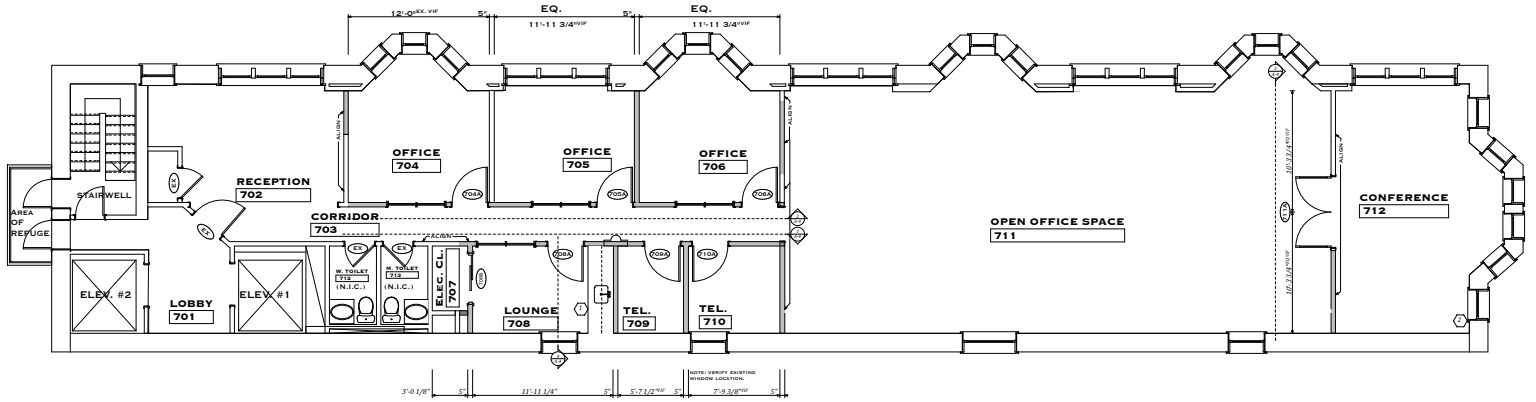
STEVE JEFFRIES
sjeffries@equitycre.com
DIRECT 484.531.2250

SOPHIA HALTERMAN
shalterman@equitycre.com
DIRECT 484.531.2213

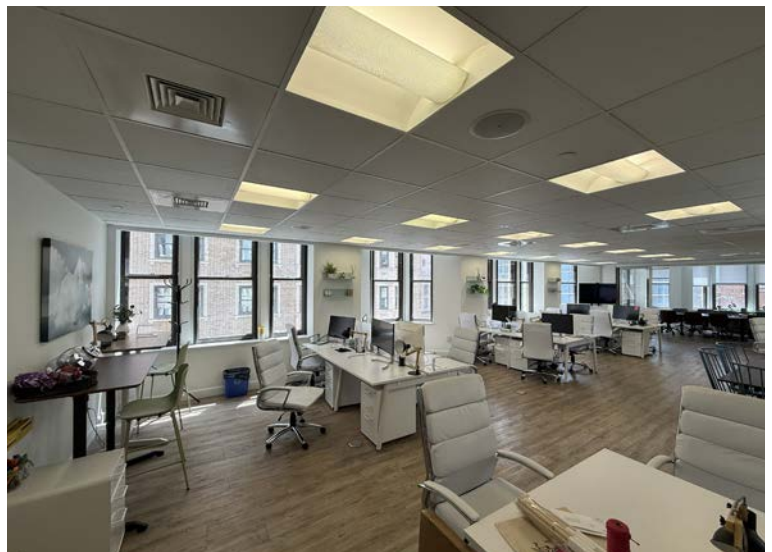
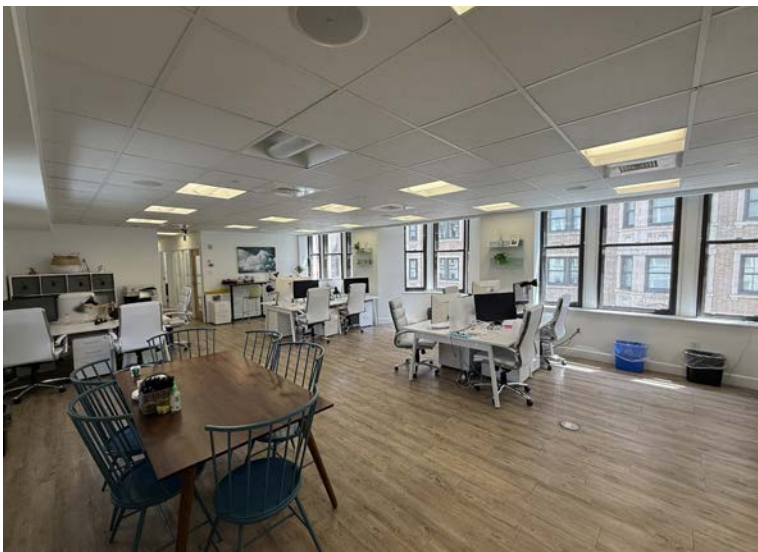
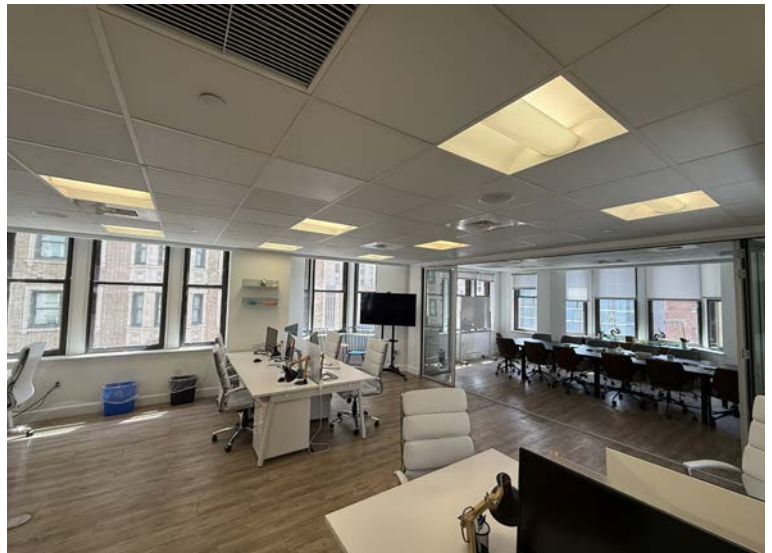
FOR LEASE: OFFICE/RETAIL SPACE, 7TH FLOOR

1701 Walnut St | Rittenhouse Square | Philadelphia, PA

FLOOR PLAN



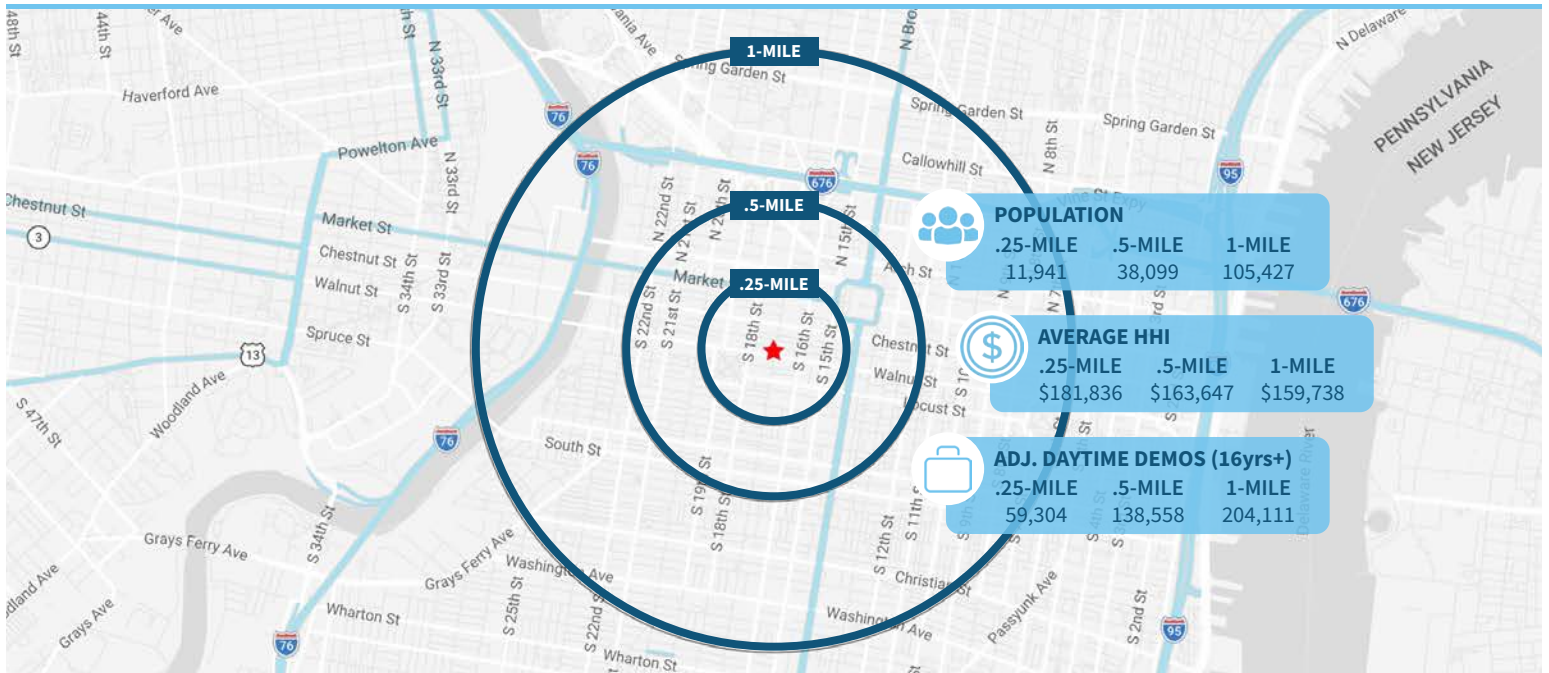
FOR LEASE: OFFICE/RETAIL SPACE, 7TH FLOOR
1701 Walnut St | Rittenhouse Square | Philadelphia, PA



FOR LEASE: OFFICE/RETAIL SPACE, 7TH FLOOR
 1701 Walnut St | Rittenhouse Square | Philadelphia, PA



Demographic Overview (0.25, 0.5, 1-mile radius)



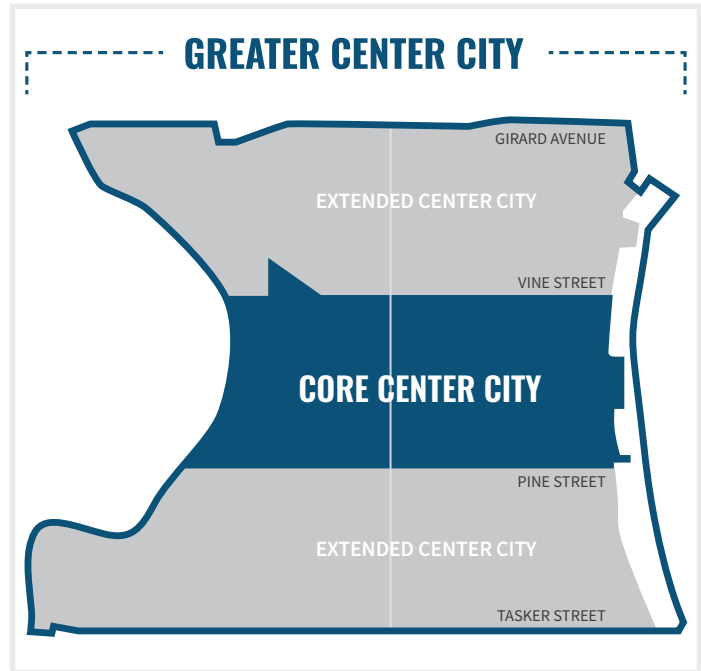
FOR LEASE: OFFICE/RETAIL SPACE, 7TH FLOOR
1701 Walnut St | Rittenhouse Square | Philadelphia, PA

EQUITY CRE

Center City Key Facts

- Center City maintains a steady retail occupancy rate of 83%, with nearly 1,792 retail businesses with a diverse mix of both national and local brands.
- The number of retailers has grown by 15% since 2019.
- New entertainment venues have transformed the retail landscape, offering experiential offerings beyond traditional shopping.
- Center City District’s Open Streets initiative in September 2024 proved remarkably effective, with nearly 90% of businesses reporting increased foot traffic and a 68% average increase in sales.

(Center City District)

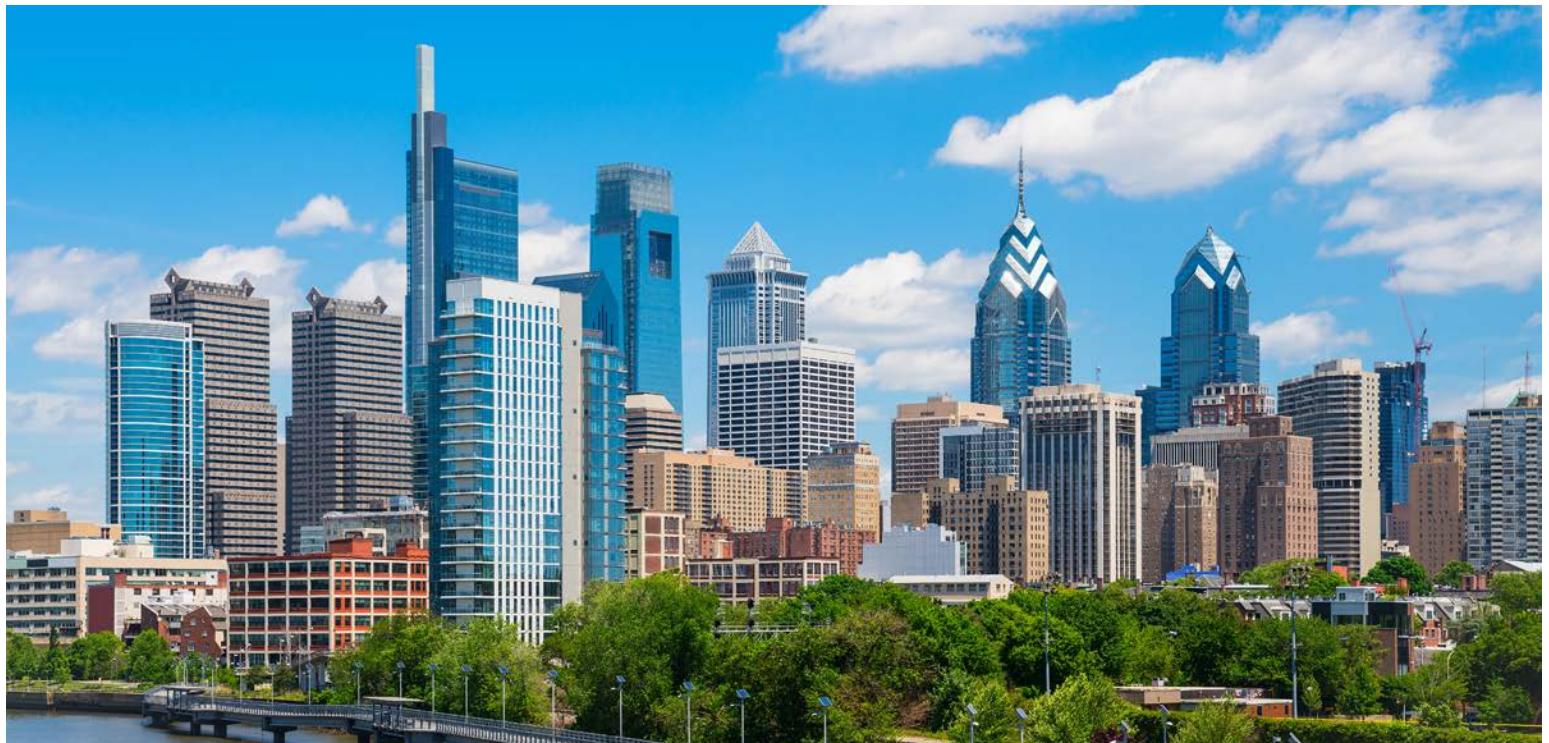


83%
storefronts occupied

815
retailers

983
food & beverage

299,956
jobs in Philadelphia



The right space. The right move.



Information concerning this offering is from sources deemed reliable but no warranty is made to the accuracy thereof and it is submitted subject to errors, omissions, changes of price or other conditions, prior to sale or lease or withdrawal without notice. Equity CRE is licensed in PA, NJ, & DE. Steve Jeffries, Conor Tunno and Sophia Halterman are licensed salespersons in PA.

05/26

