

FOR SALE OR LEASE: TWO GAS STATIONS ON CORNER LOTS

405 E Clements Bridge Rd, Runnemede, Camden County, NJ 08078

1 Evesham Rd, Voorhees Township, Camden County, NJ 08043

EQUITY CRE

1 Evesham Rd, Voorhees Twp



PROPERTY FEATURES & DETAILS

- Corner lot locations in commercial areas
- Possible owner financing available
- Pylon Sign identification at each location
- Functioning pumps
- High visibility locations
- Traffic light access
- Voorhees location at the Ashland PATCO station

405 E Clements Bridge Rd, Runnemede



CONTACT

GEORGE WISNOSKI

gwisnoski@equitycre.com

DIRECT 484.417.2220

FOR SALE OR LEASE: TWO GAS STATIONS ON CORNER LOTS

405 E Clements Bridge Rd, Runnemede, Camden County, NJ 08078

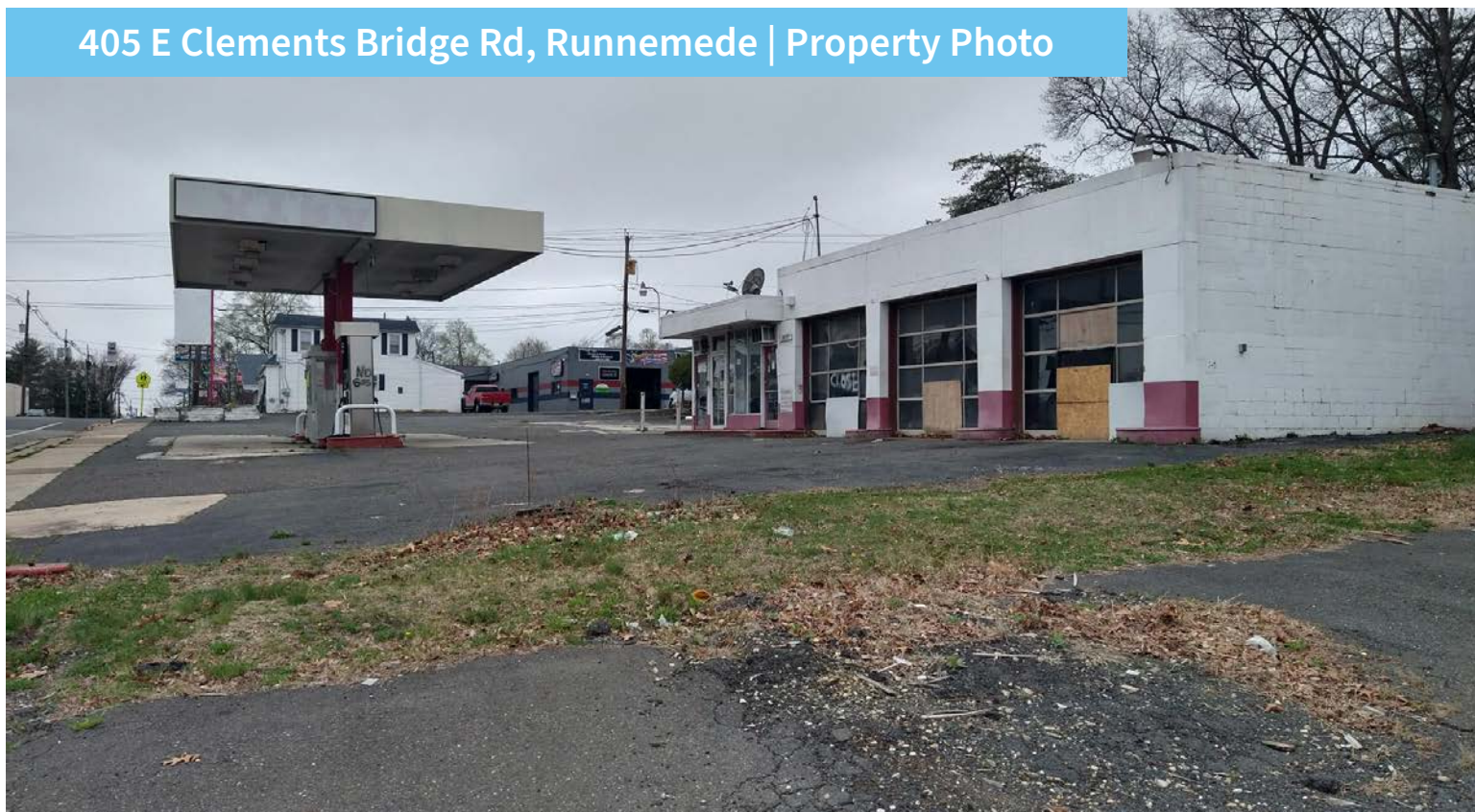
1 Evesham Rd, Voorhees Township, Camden County, NJ 08043

EQUITY CRE

1 Evesham Rd, Voorhees Twp | Property Photo



405 E Clements Bridge Rd, Runnemede | Property Photo

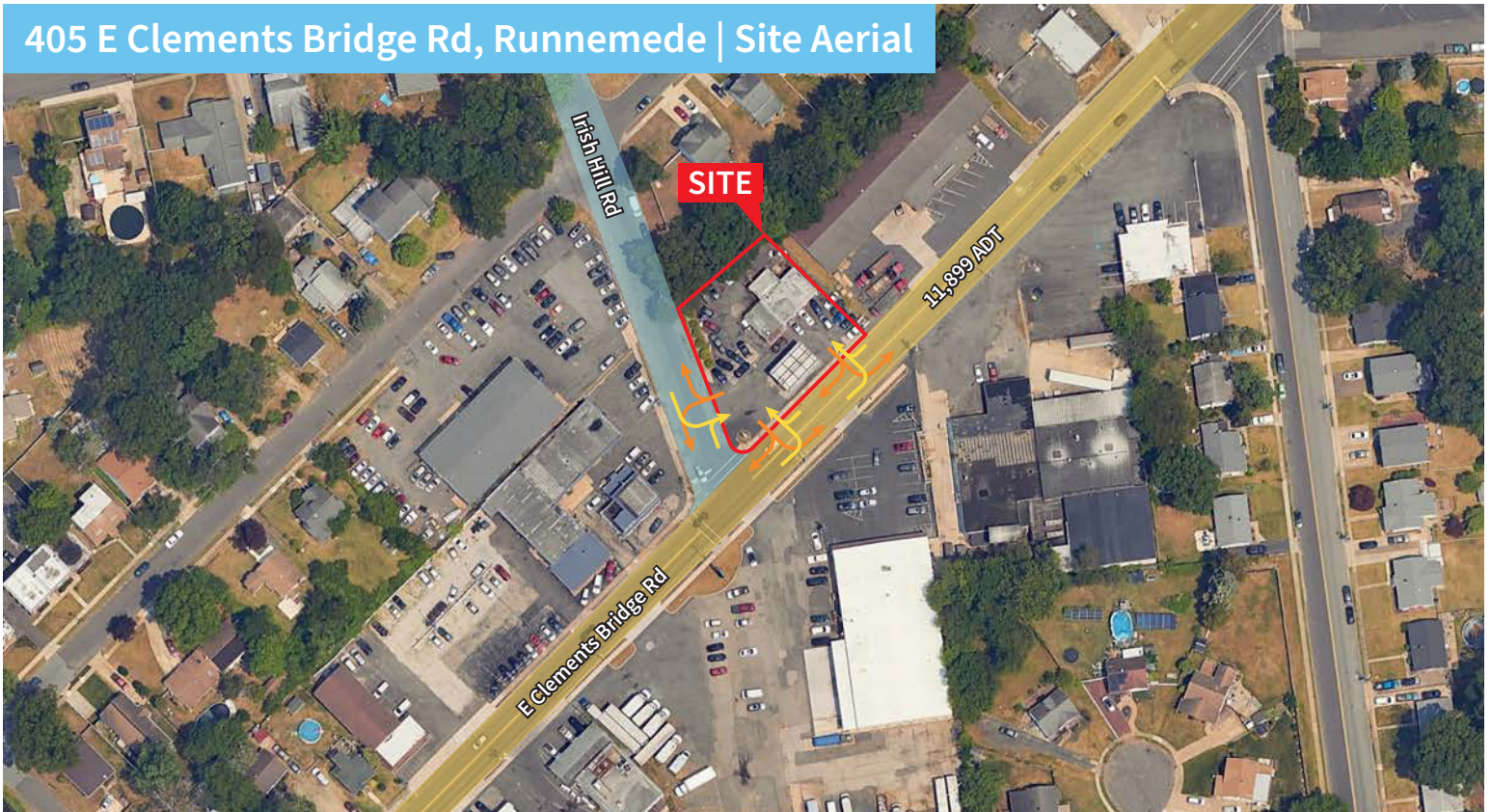


FOR SALE OR LEASE: TWO GAS STATIONS ON CORNER LOTS
405 E Clements Bridge Rd, Runnemede, Camden County, NJ 08078
1 Evesham Rd, Voorhees Township, Camden County, NJ 08043

1 Evesham Rd, Voorhees Twp | Site Aerial

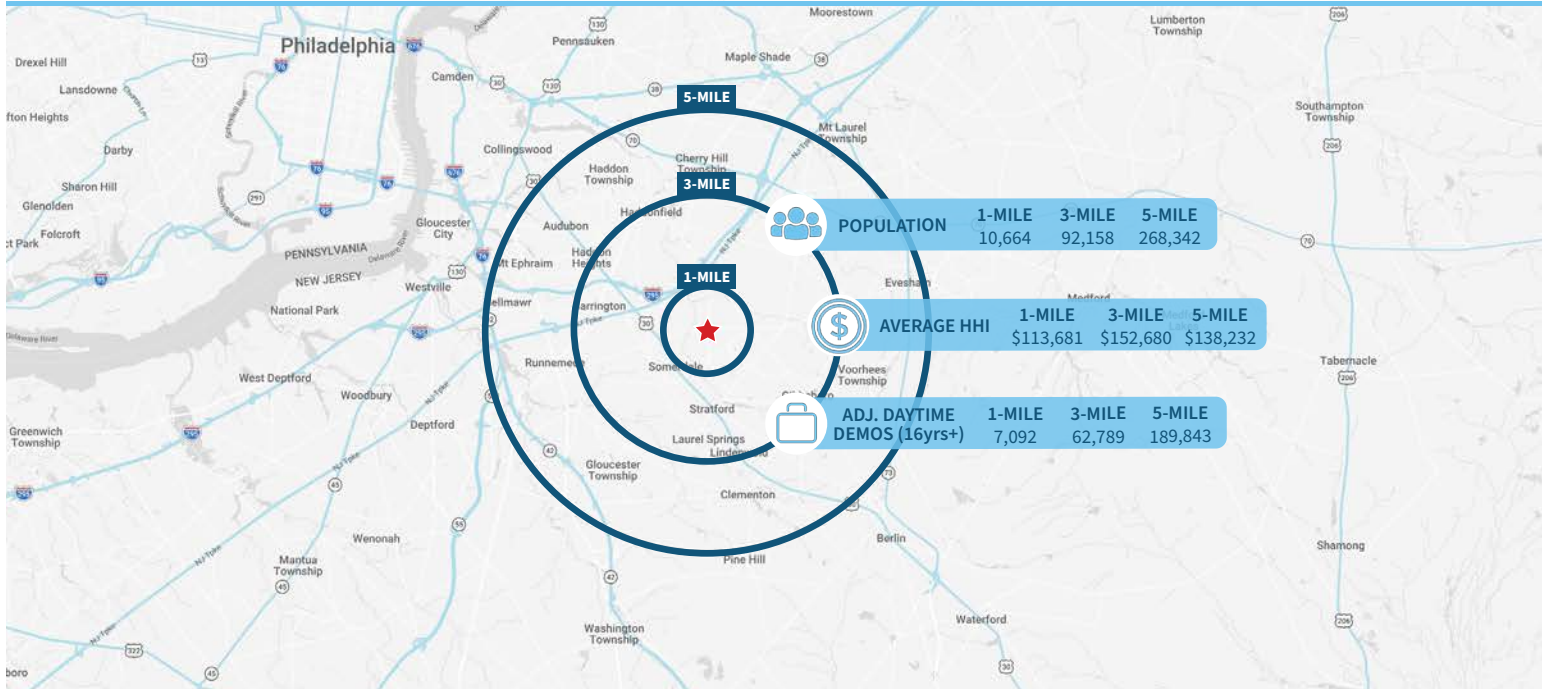


405 E Clements Bridge Rd, Runnemede | Site Aerial

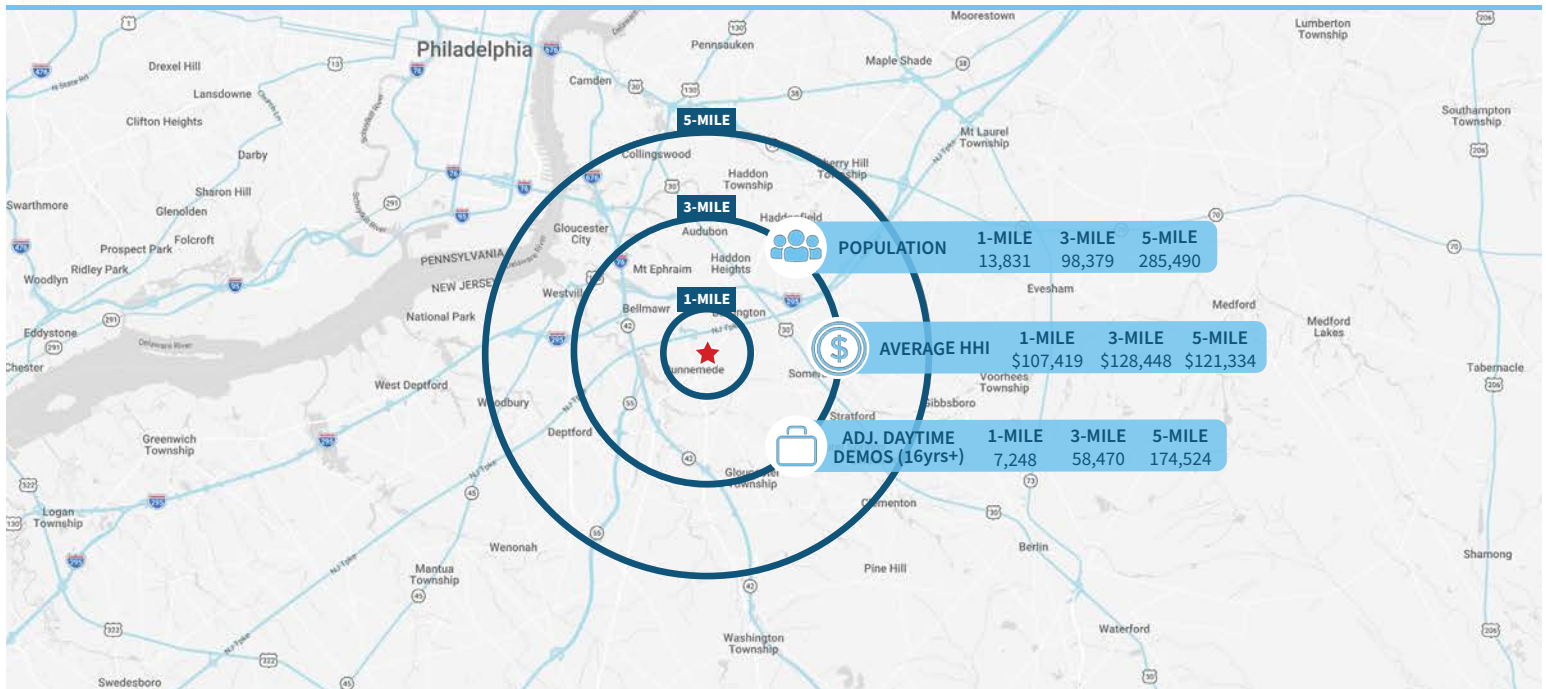


FOR SALE OR LEASE: TWO GAS STATIONS ON CORNER LOTS
 405 E Clements Bridge Rd, Runnemede, Camden County, NJ 08078
 1 Evesham Rd, Voorhees Township, Camden County, NJ 08043

Demographic Overview (1, 3, 5-mile radius) | 1 Evesham, Voorhees Twp, NJ



Demographic Overview (1, 3, 5-mile radius) | 501 E Clements Bridge Rd, Runnemede, NJ



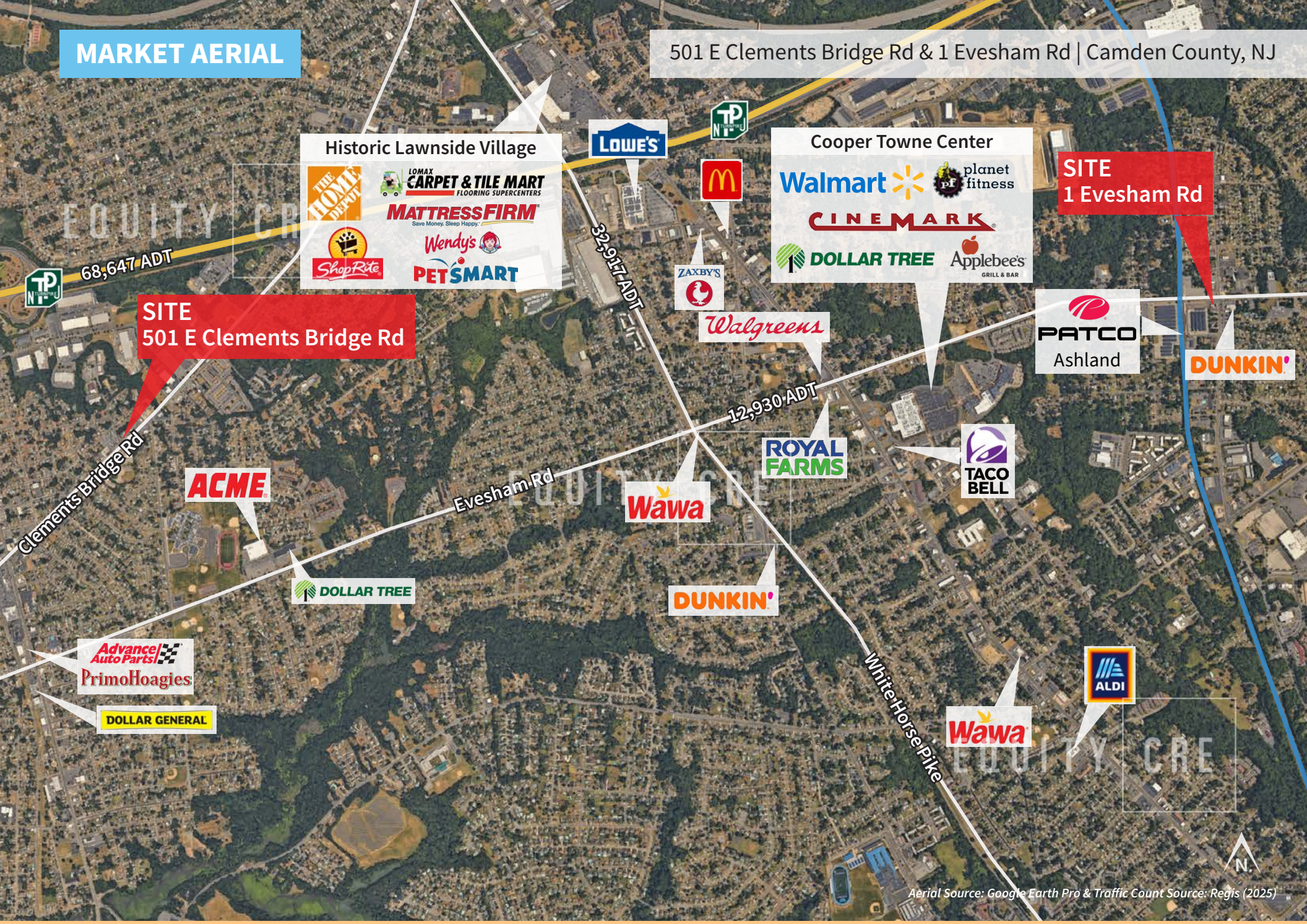
The right space. The right move.



Information concerning this offering is from sources deemed reliable but no warranty is made to the accuracy thereof and it is submitted subject to errors, omissions, changes of price or other conditions, prior to sale or lease or withdrawal without notice. Equity CRE is licensed in PA, NJ, & DE. George Wisnoski is a licensed salesperson in PA & NJ.

MARKET AERIAL

501 E Clements Bridge Rd & 1 Evesham Rd | Camden County, NJ



Aerial Source: Google Earth Pro & Traffic Count Source: Regis (2025)