

FOR LEASE: TWO RETAIL SPACES AVAILABLE

1701-09 Washington Ave | Graduate Hospital | Philadelphia, PA

EQUITY CRE



PROPERTY HIGHLIGHTS

- 2 retail spaces for lease on Washington Avenue
- Tenant Space A- 5,600 SF (Left End Cap)
- Tenant Space B: 4,600 SF (Sherwin Williams)
- Rare off street parking available in rear
- Located in the Graduate Hospital neighborhood of Philadelphia
- Surrounded by multiple new residential developments along Washington Avenue and nearby neighborhoods with a total of 2,925 units
- A few blocks from the intersection of Broad St & Washington Avenue with many large format national retailers

CONTACT

STEVE JEFFRIES

sjeffries@equitycre.com

DIRECT 484.531.2250

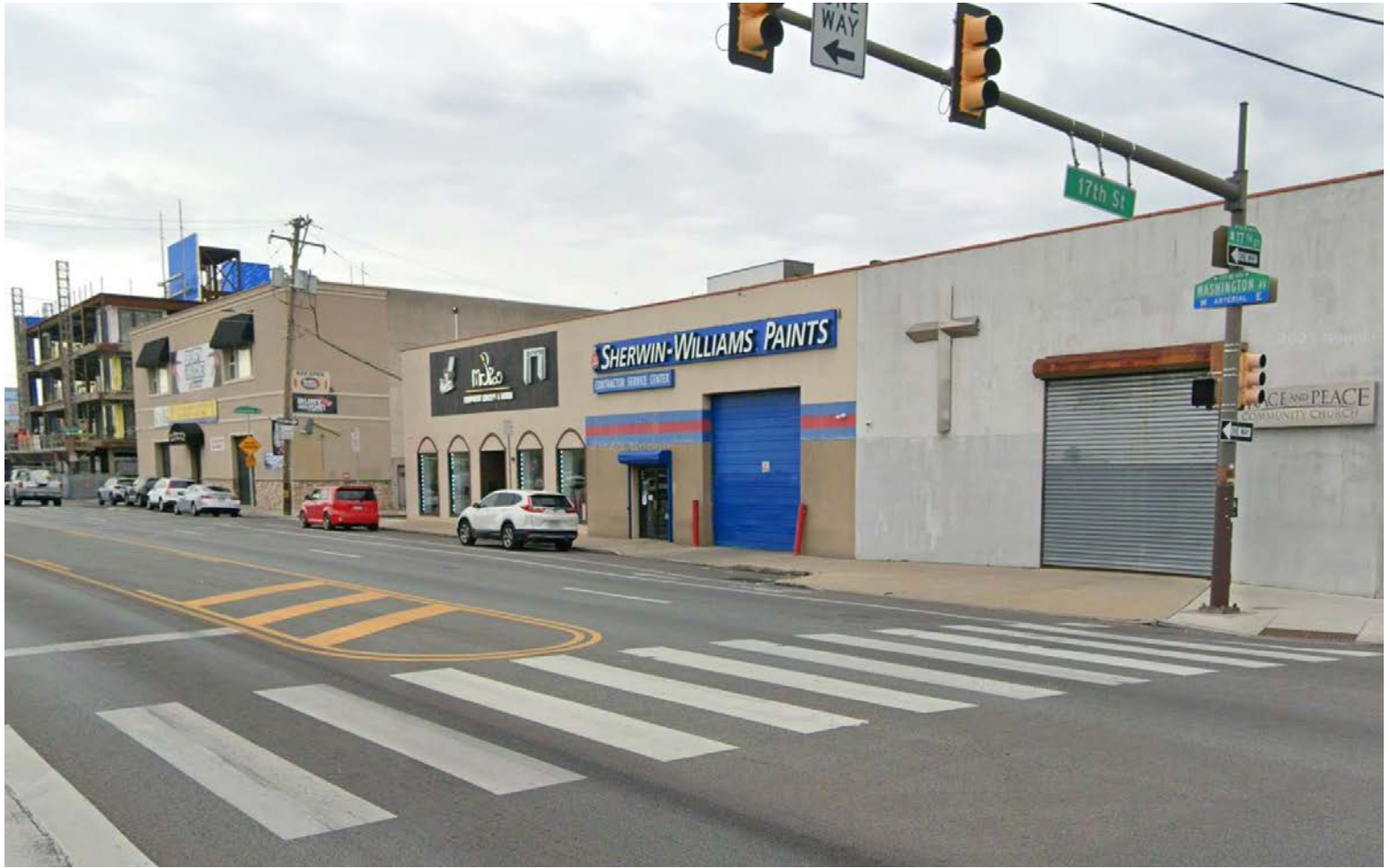
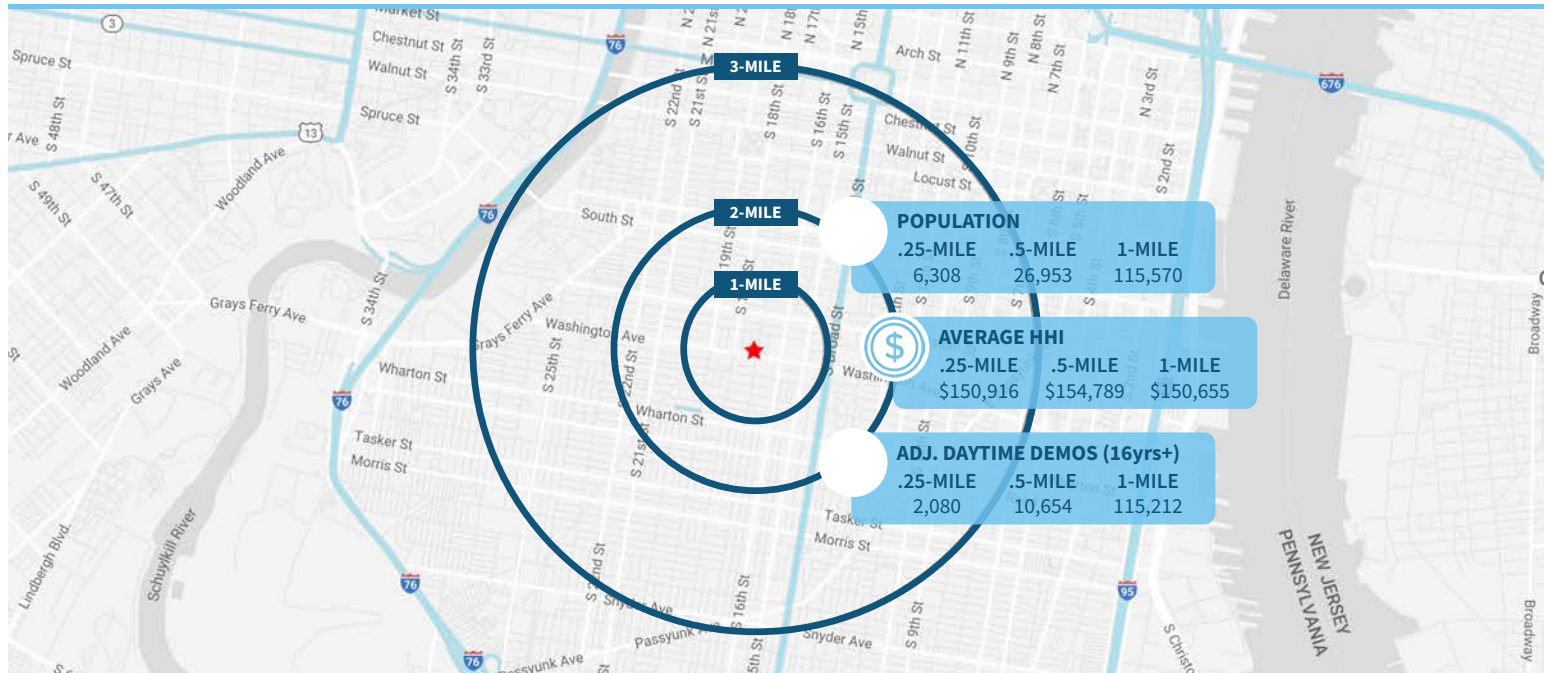
WILL CICCARELLI

wcicarelli@equitycre.com

DIRECT 484.531.2209

FOR LEASE: TWO RETAIL SPACES AVAILABLE

1701-09 Washington Ave | Graduate Hospital | Philadelphia, PA

EQUITY CRE**Demographic Overview (0.25, 0.5, 1-mile radius)**

FOR LEASE: TWO RETAIL SPACES AVAILABLE

1701-09 Washington Ave | Graduate Hospital | Philadelphia, PA

EQUITY CRE



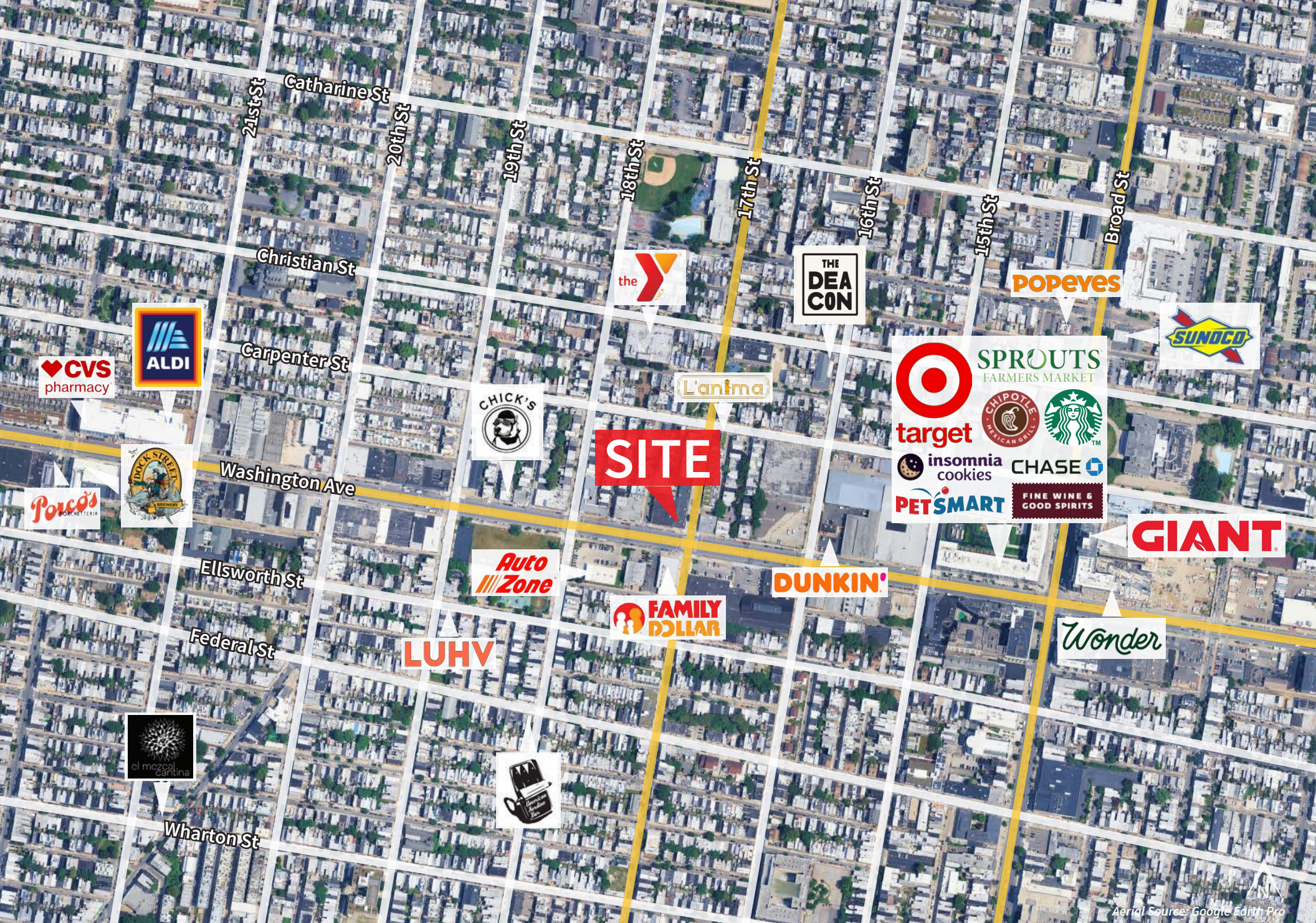
The right space. The right move.



CMRE CAPITAL MARKETS
REAL ESTATE NETWORK

Information concerning this offering is from sources deemed reliable but no warranty is made to the accuracy thereof and it is submitted subject to errors, omissions, changes of price or other conditions, prior to sale or lease or withdrawal without notice. Equity CRE is licensed in PA, NJ, & DE. Will Ciccarelli & Steve Jeffries are licensed salespersons in PA.

11/25



Aerial Source: Google Earth Pro