

FOR LEASE: RETAIL/RESTAURANT SPACE
6,311 SF

1900 N Front St | Fishtown | Philadelphia, PA

EQUITY CRE



PROPERTY HIGHLIGHTS

- 6,311 SF available (divisible)
- Brand new mixed-use development located in Fishtown, at the convergence of the densely populated Northern Liberties & South Kensington neighborhoods
- Targeting hospitality, bars, restaurants, fitness & markets
- Landlord prepared to offer an aggressive restaurant TIA package for qualified operators
- On the corner of Front St & Berks St
- Directly across from Berks Station on the SEPTA Market-Frankford Line
- Easy access to Center City within 12 minutes via public transit
- Walking distance to some of the best bars and restaurants in Philadelphia including Frankford Hall, R&D, Next of Kin, Suraya, LMNO & Pizzeria Beddia



CONTACT

STEVE JEFFRIES

sjeffries@equitycre.com

DIRECT 484.531.2250

WILL CICCARELLI

wcicarelli@equitycre.com

DIRECT 484.531.2209

CHRIS MUNDIATH

cmundiath@equitycre.com

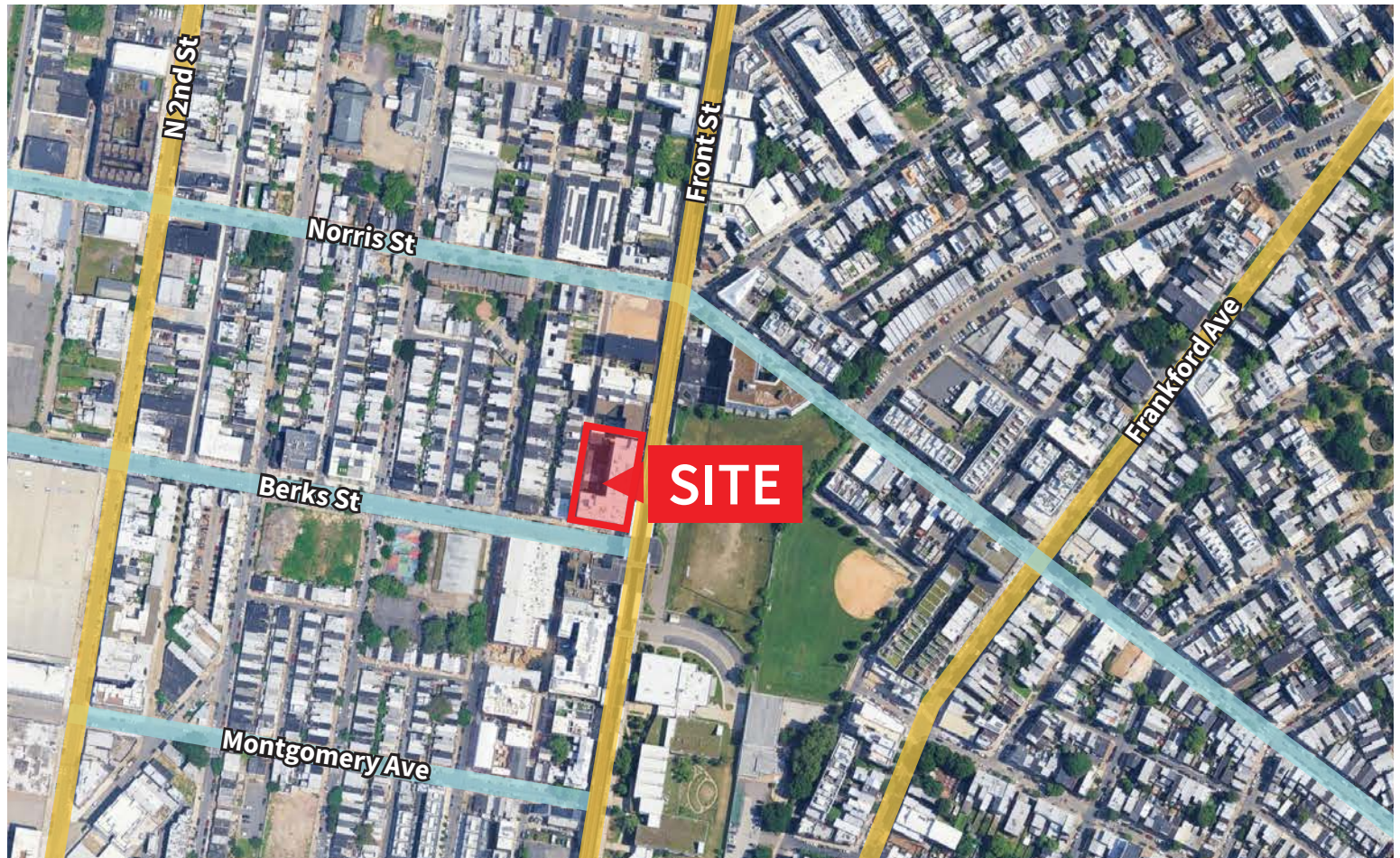
CELL 610.772.4746

FOR LEASE: RETAIL/RESTAURANT SPACE

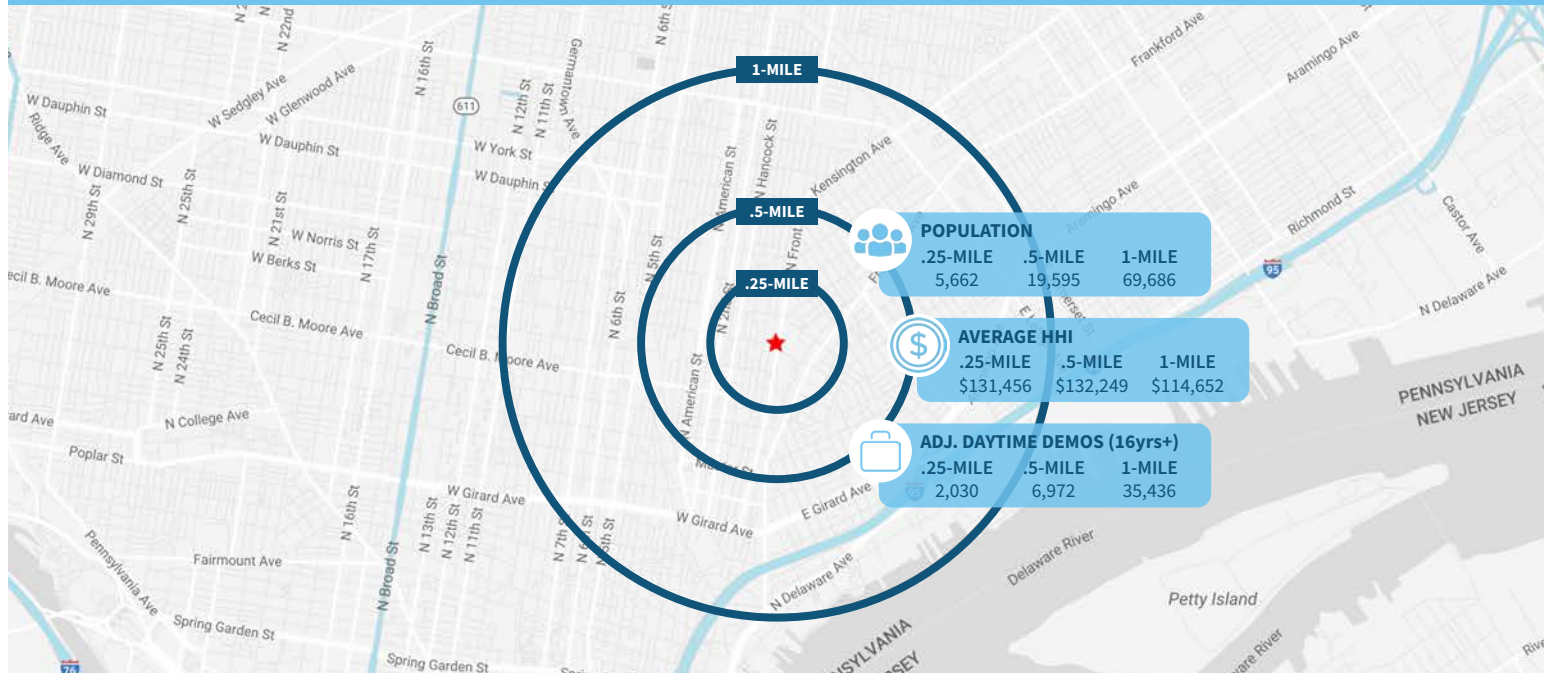
6,311 SF

1900 N Front St | Fishtown | Philadelphia, PA

EQUITY CRE



Demographic Overview (0.25, 0.50, 1-mile radius)



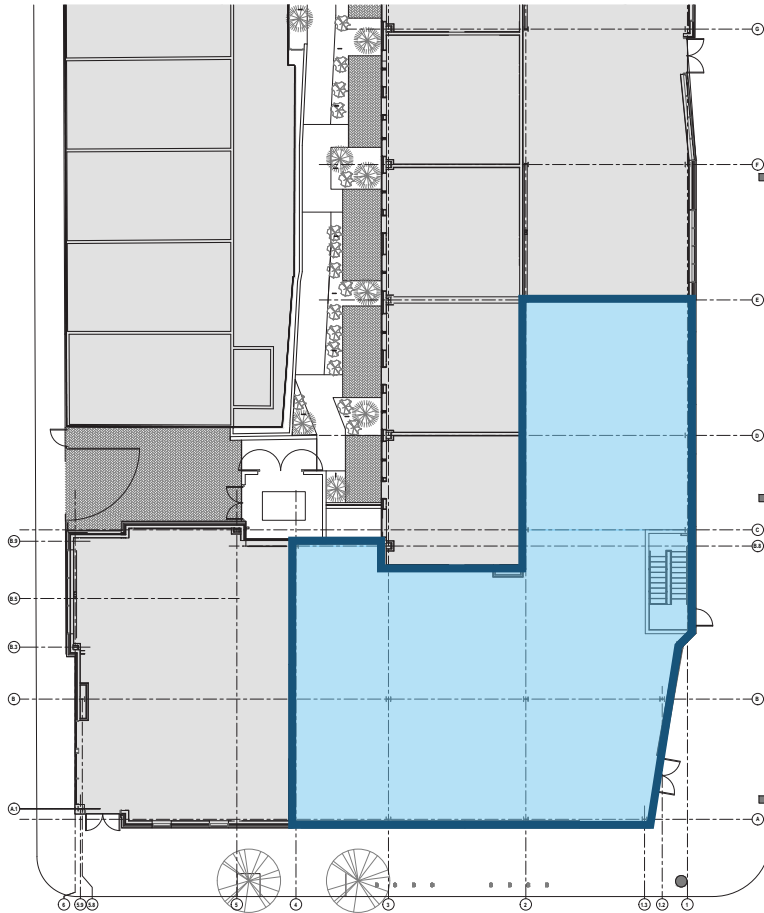
FOR LEASE: RETAIL/RESTAURANT SPACE

6,311 SF

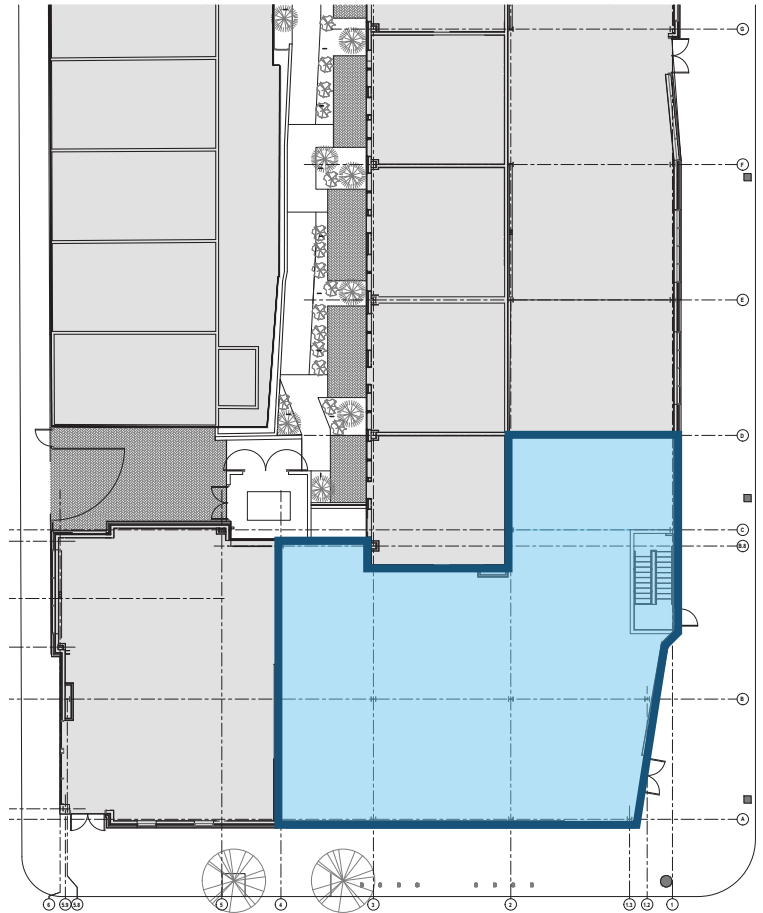
1900 N Front St | Fishtown | Philadelphia, PA

EQUITY CRE

FLOOR PLANS



Option 1



Option 2

The right space. The right move.



CMRE CAPITAL MARKETS
REAL ESTATE NETWORK

Information concerning this offering is from sources deemed reliable but no warranty is made to the accuracy thereof and it is submitted subject to errors, omissions, changes of price or other conditions, prior to sale or lease or withdrawal without notice. Equity CRE is licensed in PA, NJ, & DE. Steve Jeffries, Will Ciccarelli & Chris Mundiath are licensed salespersons in PA.

06/25

RETAIL AERIAL



Aerial Source: Google Earth Pro