

## FOR LEASE: 2ND GEN RESTAURANT SPACE

1518 Chestnut St | Rittenhouse Square | Philadelphia, PA

EQUITY CRE



### PROPERTY HIGHLIGHTS

- ±2,500 SF
- 2nd gen restaurant space with all FF&E in place
- Recently upgraded kitchen with appealing restaurant decor
- Usable basement space for storage
- Prime Rittenhouse Square location

### LOCATION DETAILS

- Located in the heart of Center City, steps from City Hall, the PATCO Line & Suburban Station
- Within two blocks in either direction of the following Center City density drivers: Rittenhouse Square, South Broad Office Sector & the Central Business District



WALK  
SCORE | 100



TRANSIT  
SCORE | 100



BIKE  
SCORE | 87

### CONTACT

STEVE JEFFRIES

[sjeffries@equitycre.com](mailto:sjeffries@equitycre.com)

DIRECT 484.531.2250

WILL CICCARELLI

[wcicarelli@equitycre.com](mailto:wcicarelli@equitycre.com)

DIRECT 484.531.2209

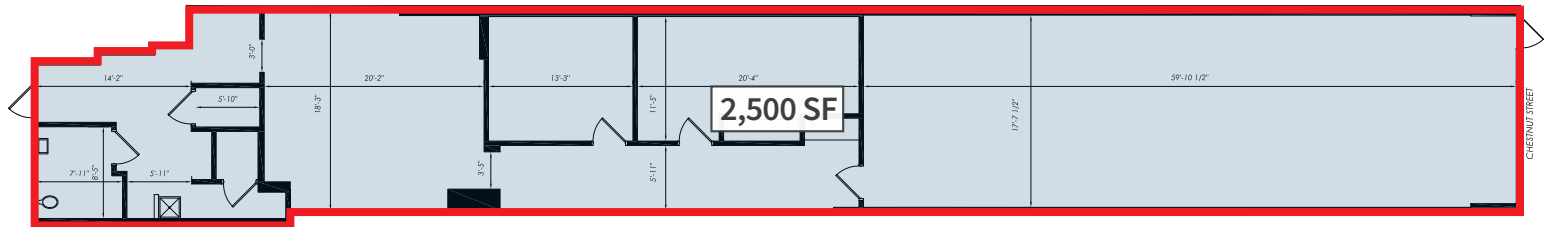


## FOR LEASE: 2ND GEN RESTAURANT SPACE

1518 Chestnut St | Rittenhouse Square | Philadelphia, PA

EQUITY CRE

### SITE PLAN

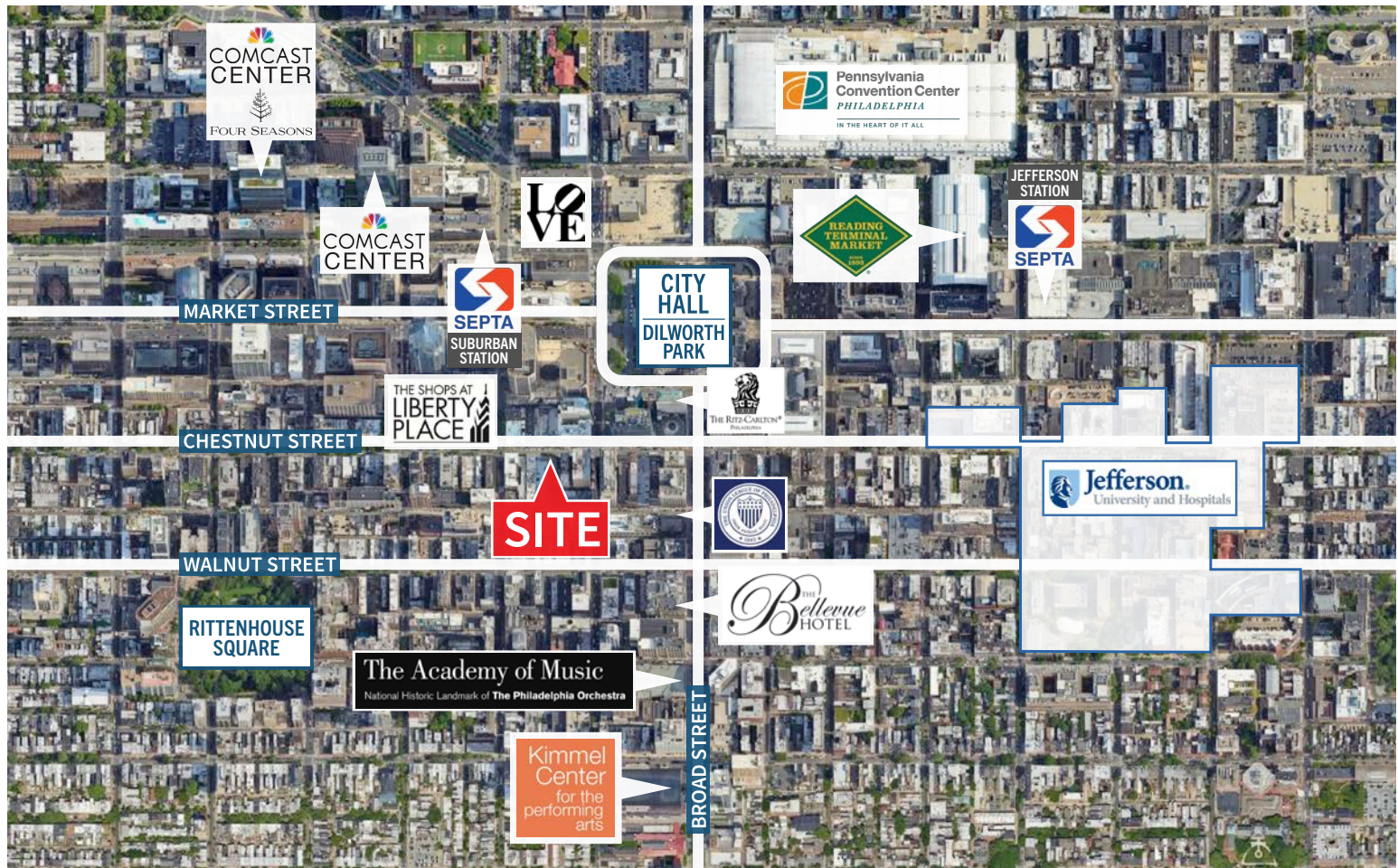




# FOR LEASE: 2ND GEN RESTAURANT SPACE

1518 Chestnut St | Rittenhouse Square | Philadelphia, PA

EQUITY CRE



## Demographic Overview (0.25, 0.5, 1-mile radius)



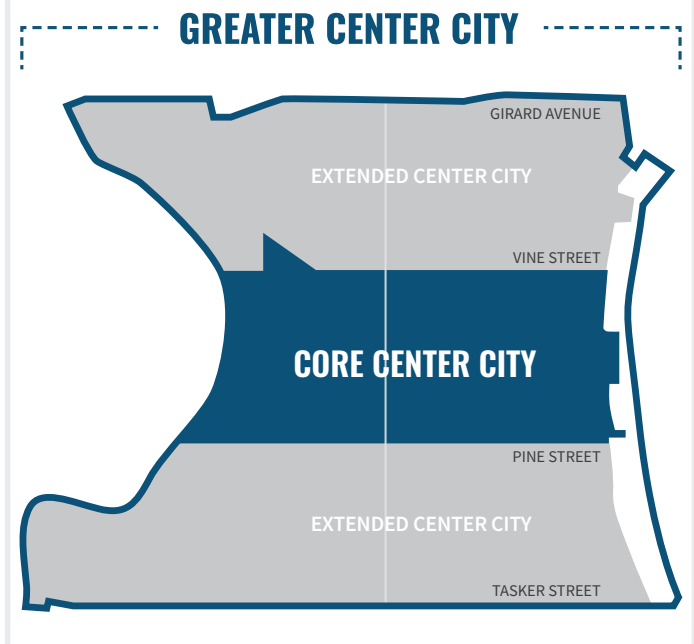


**FOR LEASE: 2ND GEN RESTAURANT SPACE**

1518 Chestnut St | Rittenhouse Square | Philadelphia, PA

**EQUITY CRE****Center City Key Facts**

- Center City maintains a steady retail occupancy rate of 83%, with nearly 1,792 retail businesses with a diverse mix of both national and local brands.
- The number of retailers has grown by 15% since 2019.
- New entertainment venues have transformed the retail landscape, offering experiential offerings beyond traditional shopping.
- Center City District's Open Streets initiative in September 2024 proved remarkably effective, with nearly 90% of businesses reporting increased foot traffic and a 68% average increase in sales.

*(Center City District)***83%**

storefronts occupied

**815**

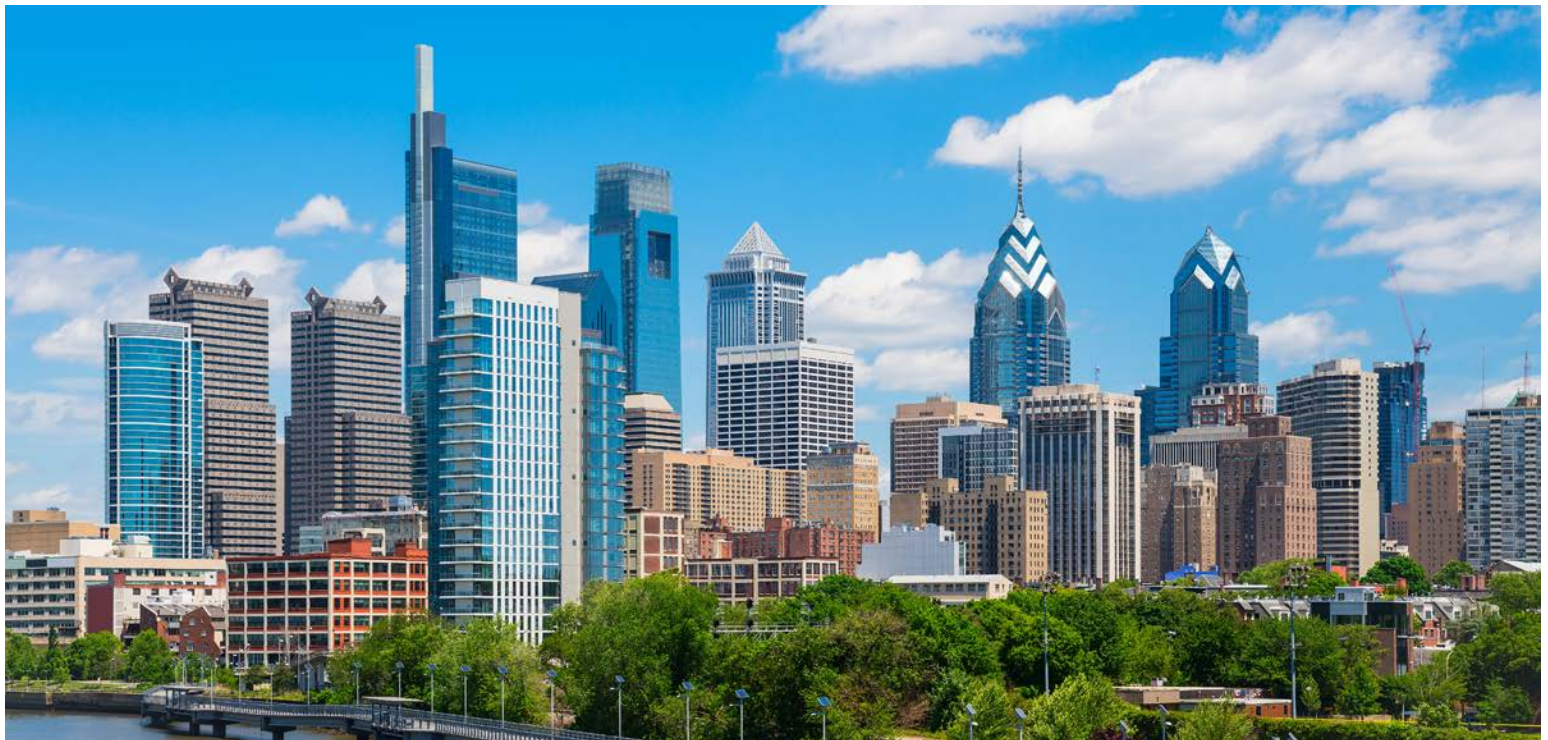
retailers

**983**

food &amp; beverage

**299,956**

jobs in Philadelphia

**The right space. The right move.****CMRE** CAPITAL MARKETS  
REAL ESTATE NETWORK

Information concerning this offering is from sources deemed reliable but no warranty is made to the accuracy thereof and it is submitted subject to errors, omissions, changes of price or other conditions, prior to sale or lease or withdrawal without notice. Equity CRE is licensed in PA, NJ, & DE. Shaun Lyons & Jake Doyle are licensed salespersons in PA.

05/25



# RETAIL AERIAL



1518 Chestnut Street | Philadelphia, PA

JFK Blvd

Filbert St

Temple University  
Center City Campus

City Hall

Dilworth  
Park

Market St

Market St

Chestnut St

Chestnut St

Walnut St

Walnut St

Locust St

Rittenhouse  
Square

Aerial Source: Google Earth Pro & Traffic Count Source: Placeriq (25)