

FOR SALE: MIXED-USE RETAIL SPACE & APARTMENT

1029 Lancaster Avenue, Berwyn, PA 19312

EQUITY CRE



ASKING PRICE: \$650,000



INVESTMENT HIGHLIGHTS

- Three story, mixed-use building
- Fully leased
- Located in the heart of Berwyn on Lancaster Avenue
- Total building size: 3,700 SF
- Lot size: 9,956 SF
- Ground floor retail space
- (1) 4 bedroom apartment
- Large yard
- Private, off-street parking lot
- Walking distance to the Berwyn Train Station (Septa Regional Rail)
- Highly visible
- Rear Deck



TRAFFIC
COUNT

12.1K



OF
UNITS

2



TOTAL
SF

3,700 SF

CONTACT

SHAUN LYONS

shaunlyons5454@gmail.com

DIRECT 267.707.3347

STEVE JEFFRIES

sjeffries@equitycre.com

DIRECT 484.531.2250

JAKE DOYLE

jdoyle@equitycre.com

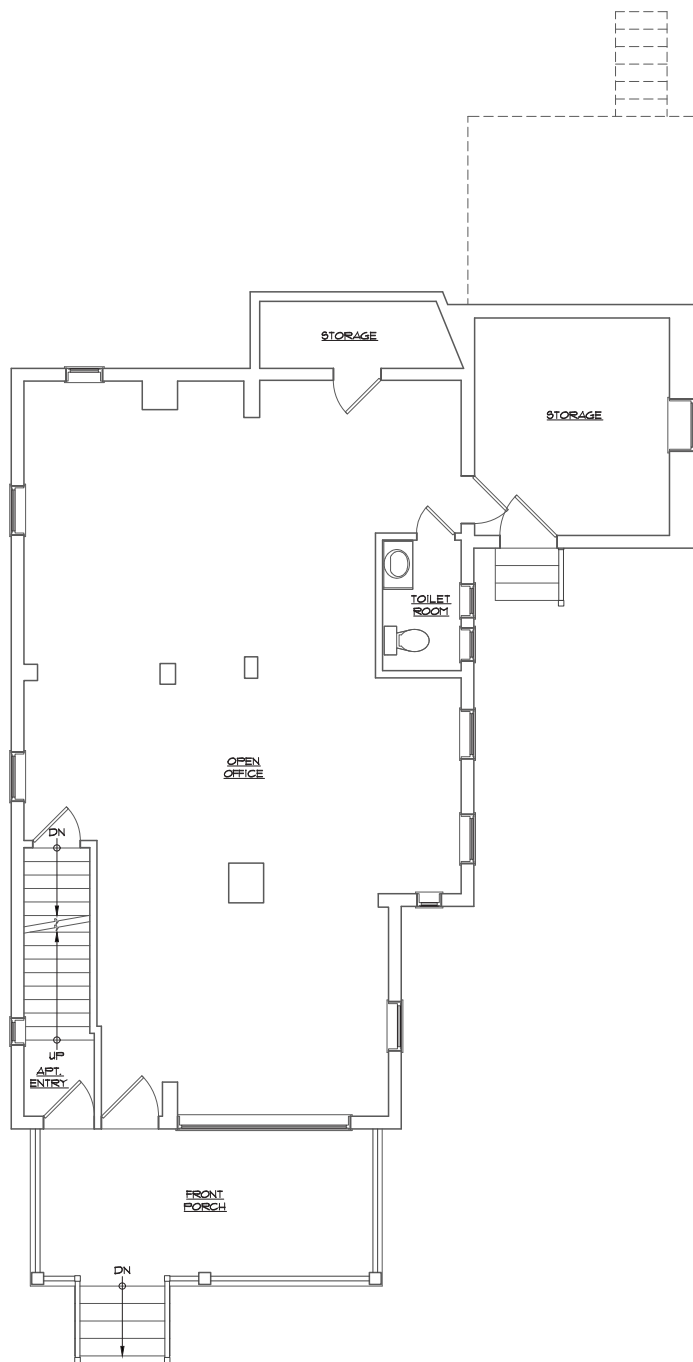
DIRECT 484.531.2176

FOR SALE: MIXED-USE RETAIL SPACE & APARTMENT

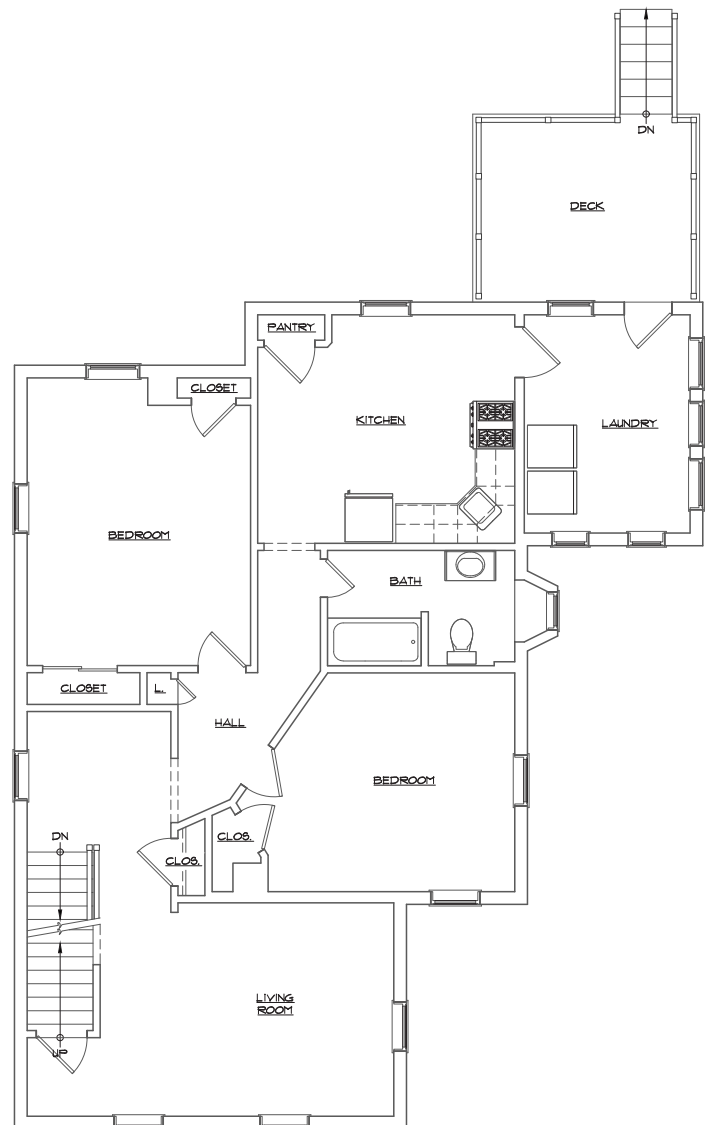
1029 Lancaster Avenue, Berwyn, PA 19312

EQUITY CRE

FLOOR PLANS



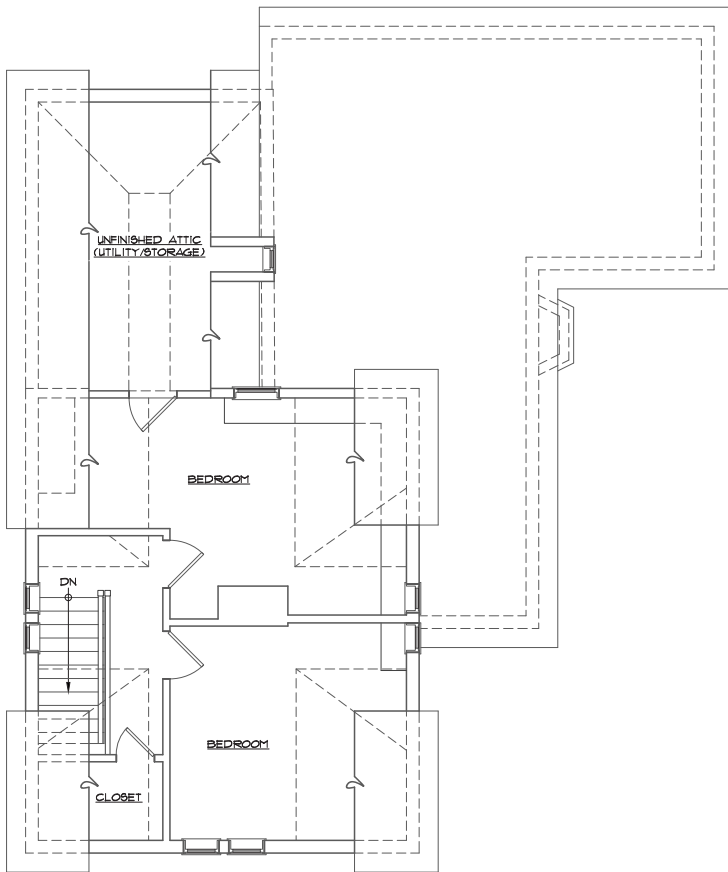
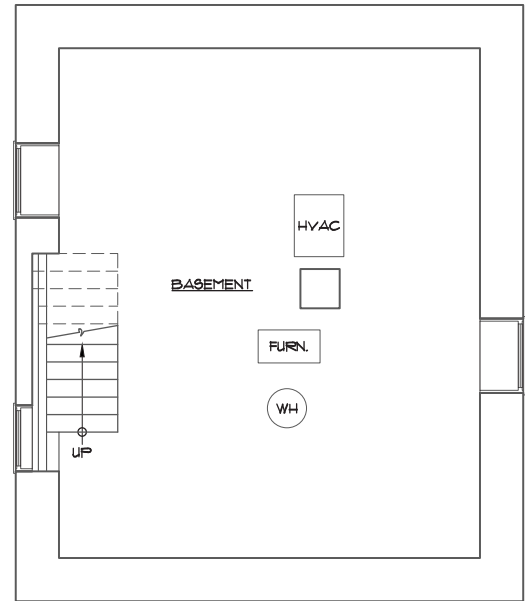
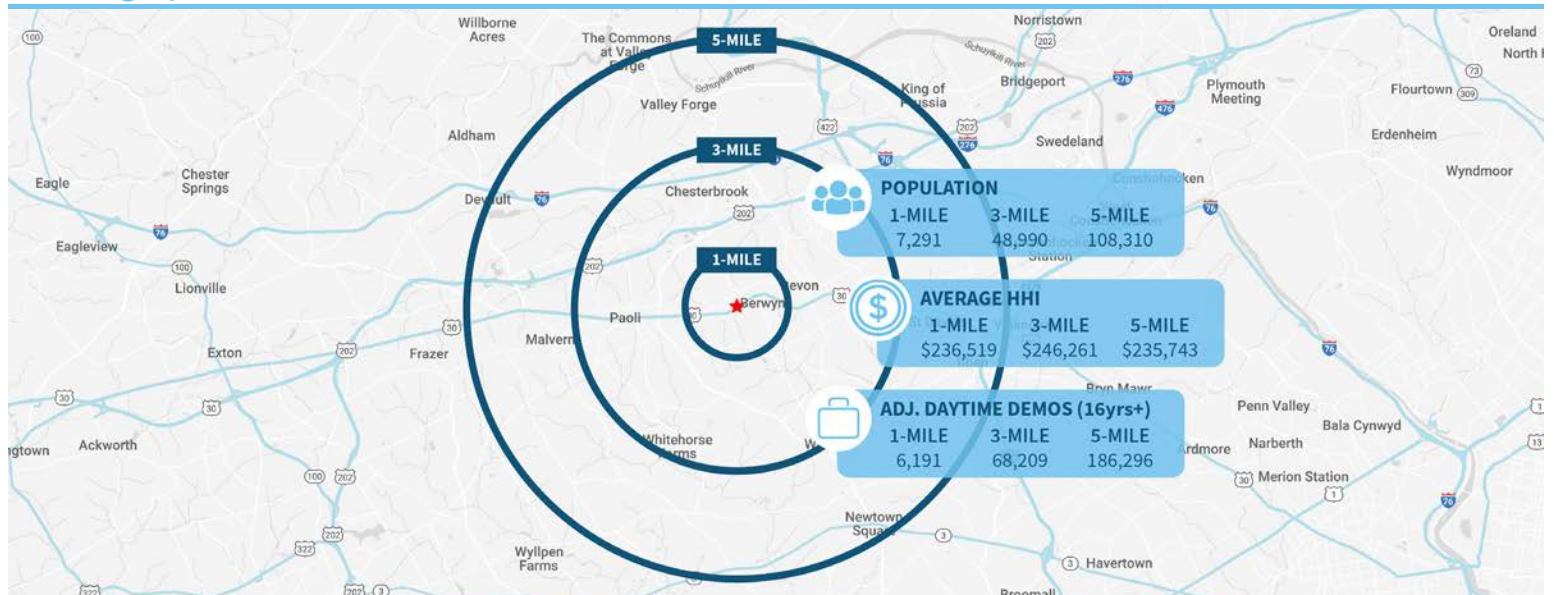
1ST FLOOR



2ND FLOOR

FOR SALE: MIXED-USE RETAIL SPACE & APARTMENT

1029 Lancaster Avenue, Berwyn, PA 19312

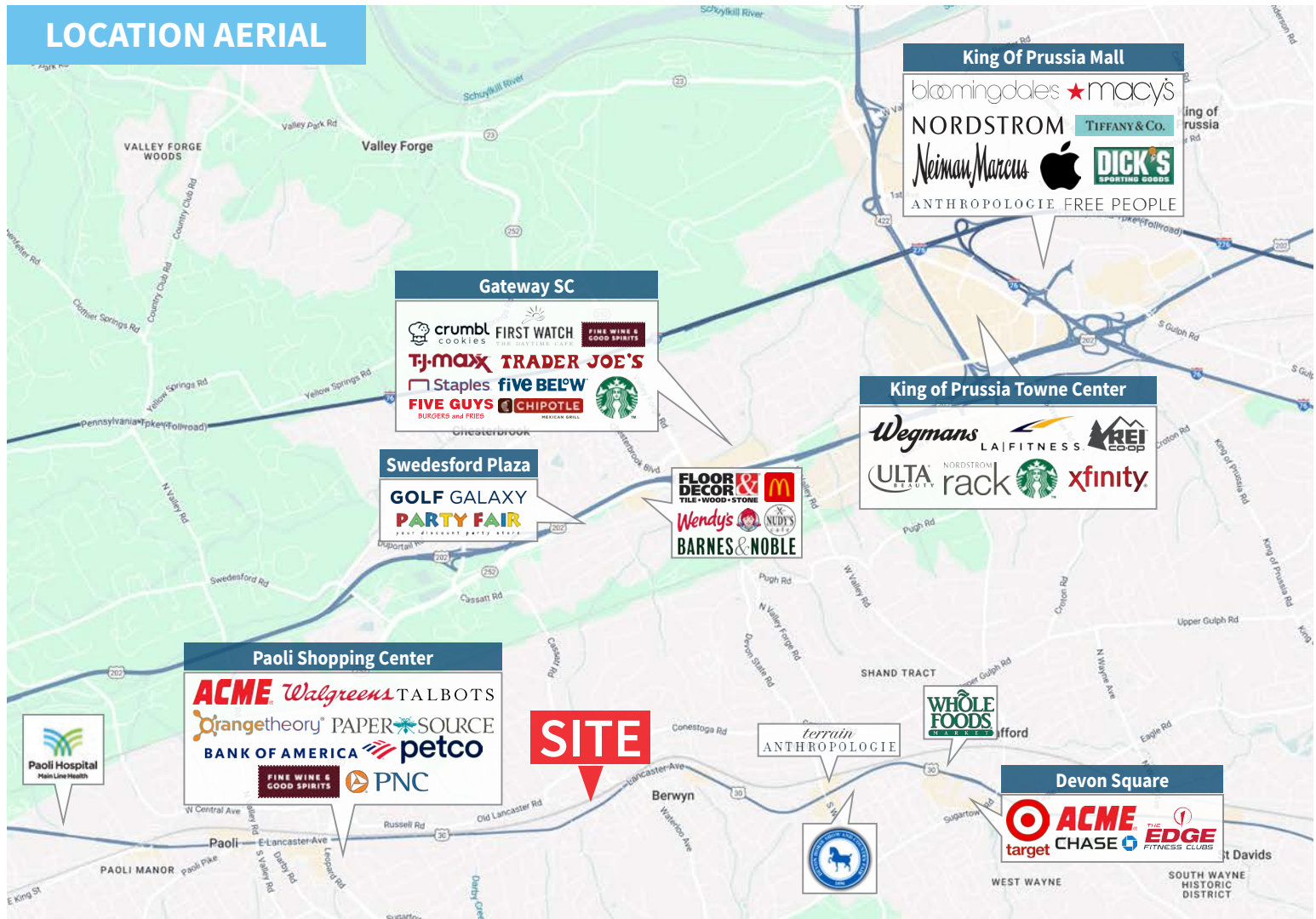
EQUITY CRE**FLOOR PLANS****3RD FLOOR****BASEMENT****Demographic Overview (1, 3, 5-mile radius)**

FOR SALE: MIXED-USE RETAIL SPACE & APARTMENT

1029 Lancaster Avenue, Berwyn, PA 19312

EQUITY CRE

LOCATION AERIAL

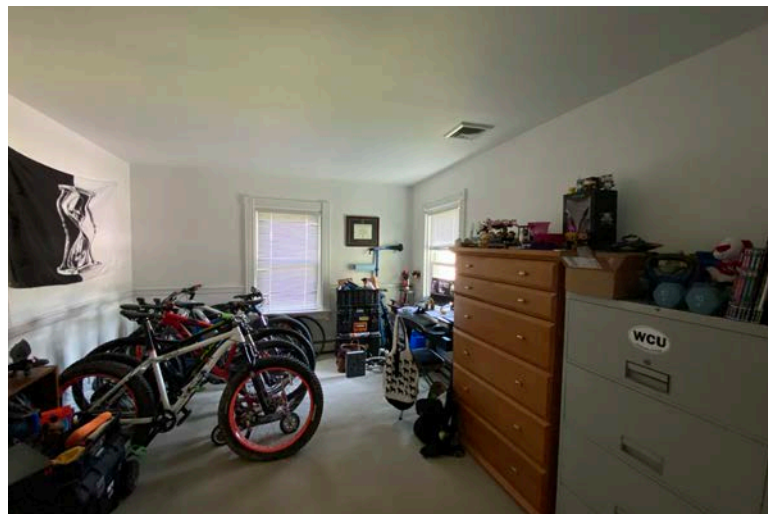
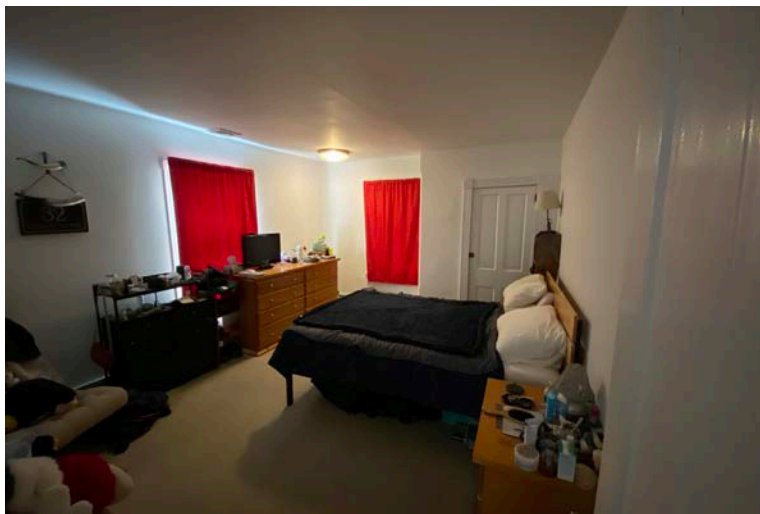
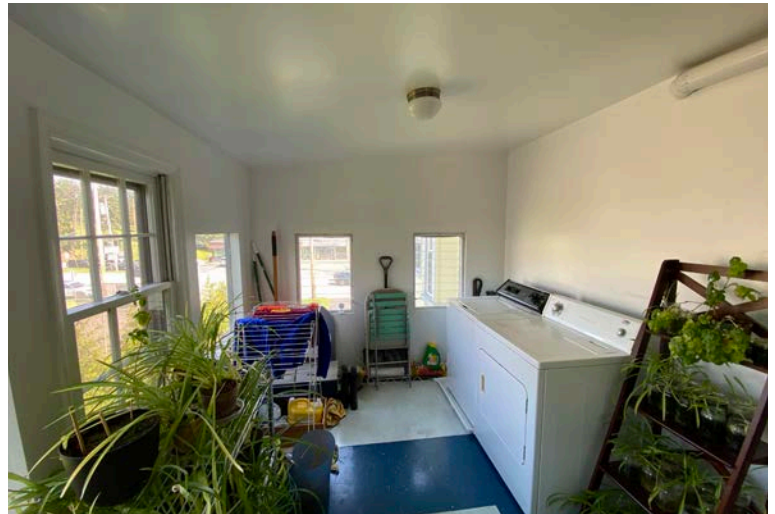


FOR SALE: MIXED-USE RETAIL SPACE & APARTMENT

1029 Lancaster Avenue, Berwyn, PA 19312

EQUITY CRE

RESIDENTIAL UNIT

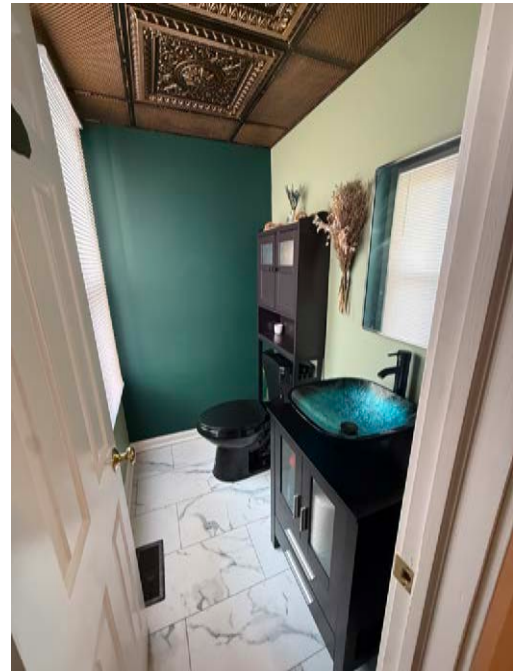
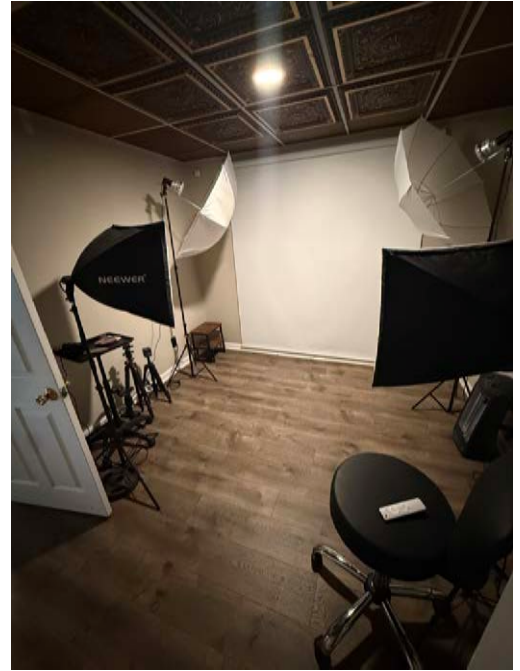


FOR SALE: MIXED-USE RETAIL SPACE & APARTMENT

1029 Lancaster Avenue, Berwyn, PA 19312

EQUITY CRE

RETAIL SPACE



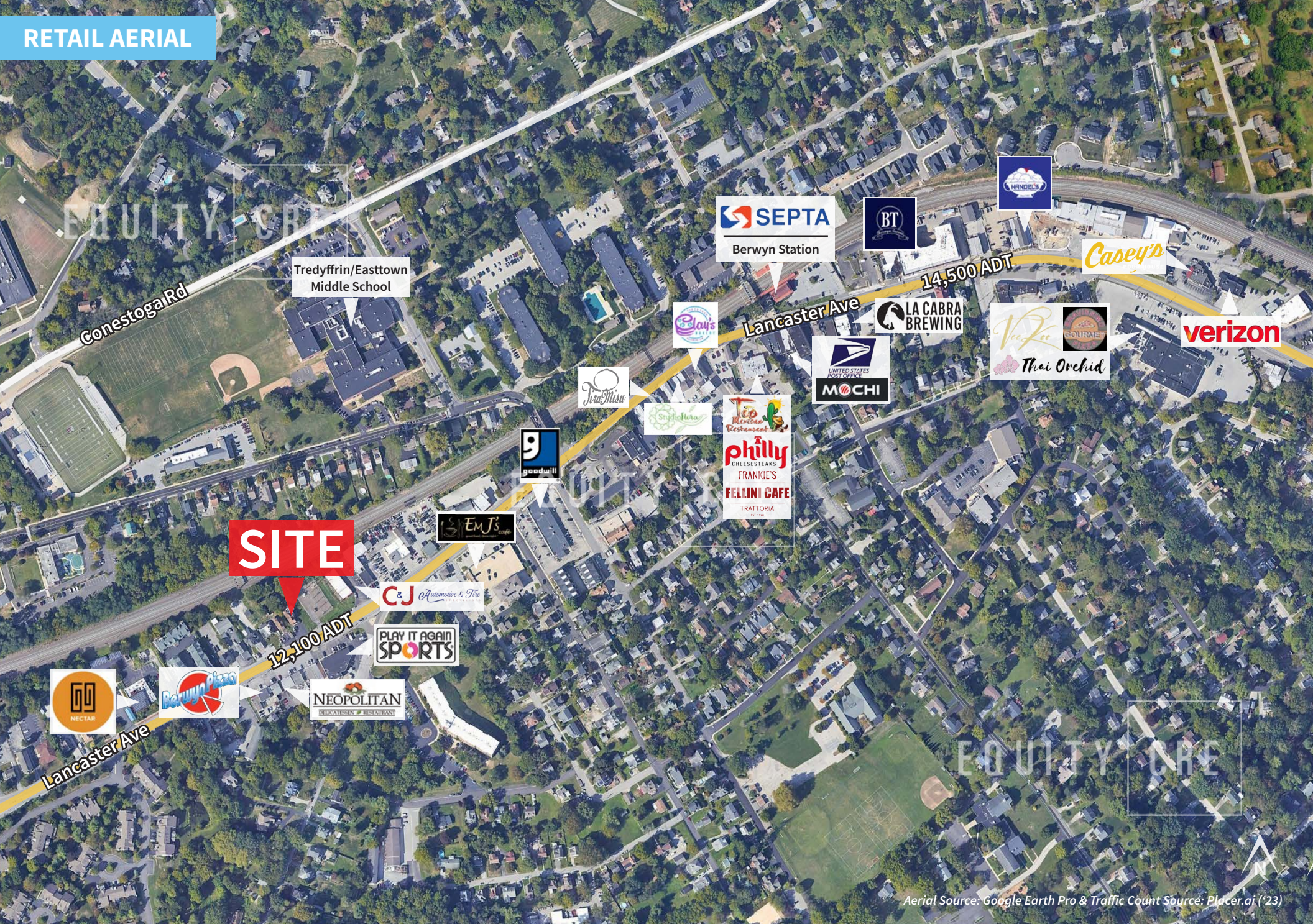
The right space. The right move.



CMRE CAPITAL MARKETS
REAL ESTATE NETWORK

Information concerning this offering is from sources deemed reliable but no warranty is made to the accuracy thereof and it is submitted subject to errors, omissions, changes of price or other conditions, prior to sale or lease or withdrawal without notice. Equity CRE is licensed in PA, NJ, & DE. Shaun Lyons, Steve Jeffries & Jake Doyle are licensed salespersons in PA.

06/25



Aerial Source: Google Earth Pro & Traffic Count Source: Placer.ai ('23)