

FOR LEASE: STOREFRONT RETAIL SPACE

310 W Girard Ave, Philadelphia, PA 19123

EQUITY CRE

RENDERING | ORIANNA ST & GIRARD AVE



PROPERTY FEATURES & DETAILS

- Delivering Summer 2026
- 3,000 - 9,300 SF Available (Divisible)
- Ground floor retail beneath 165 units
- Great access to public transportation
- Ideal for F&B, Fitness and Retail Tenants
- Steps from North Liberties Piazza and Schmidt's Commons



LOCATION DETAILS

- Northern Liberties / West Girard Corridor
- Thousands of units under development throughout Girard Ave and Spring Garden corridors
- Proximity:
 - › 5 minutes to I-95
 - › 7 minutes to Center City
 - › Walking distance to 2nd Street and Frankford Ave Corridors

CONTACT

STEVE JEFFRIES

sjeffries@equitycre.com

DIRECT 484.531.2250

CONOR TUNNO

ctunno@equitycre.com

DIRECT 484.531.2004

WILL CICCARELLI

wcicarelli@equitycre.com

DIRECT 484.531.2209

SITE PLAN

Retail Space
6,300 SF

Retail Space
3,000 SF

Residential Apartments

OPEN ATRIUM
COURTYARD

2BR

1BR

1BR

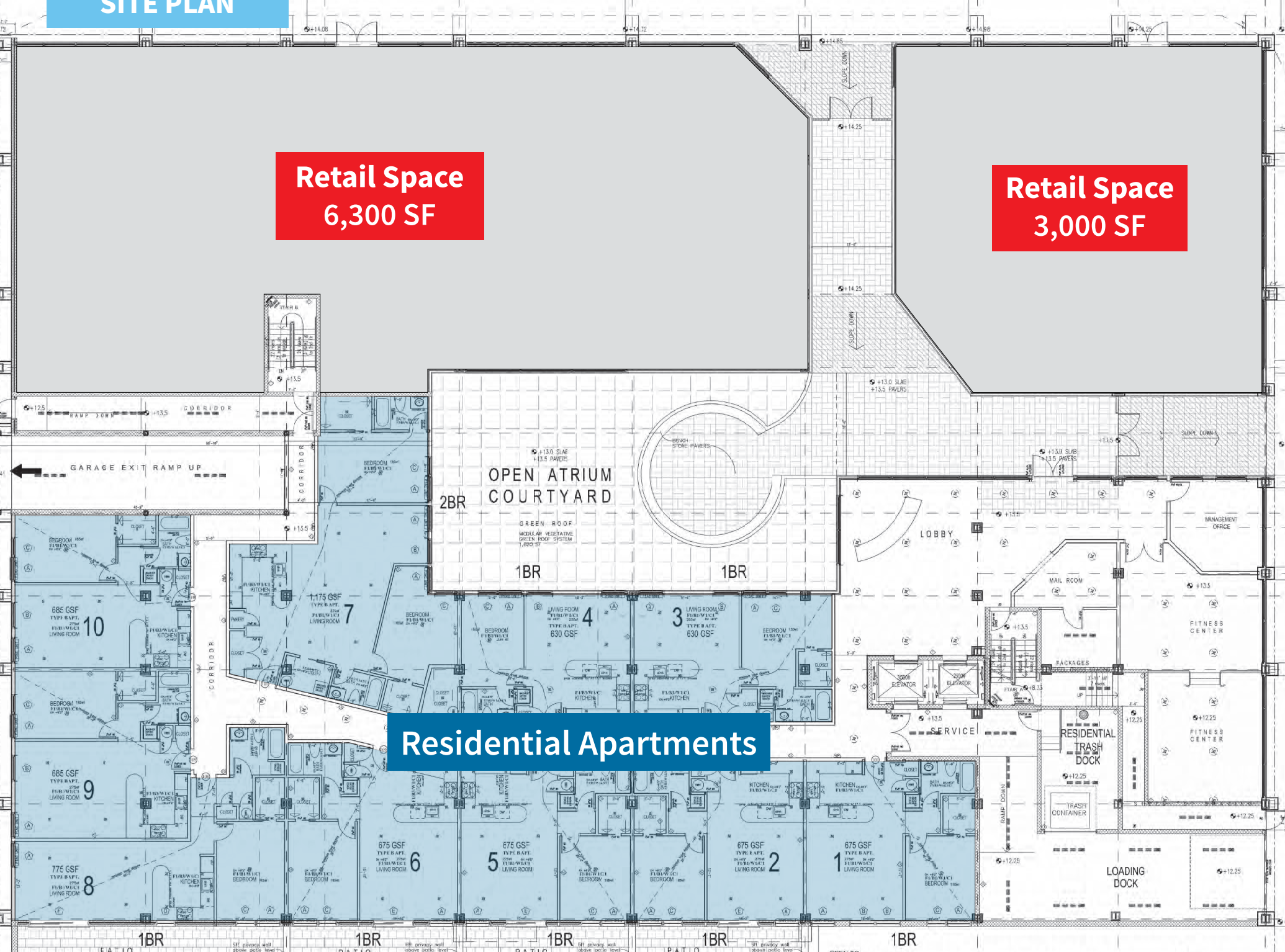
1BR

1BR

1BR

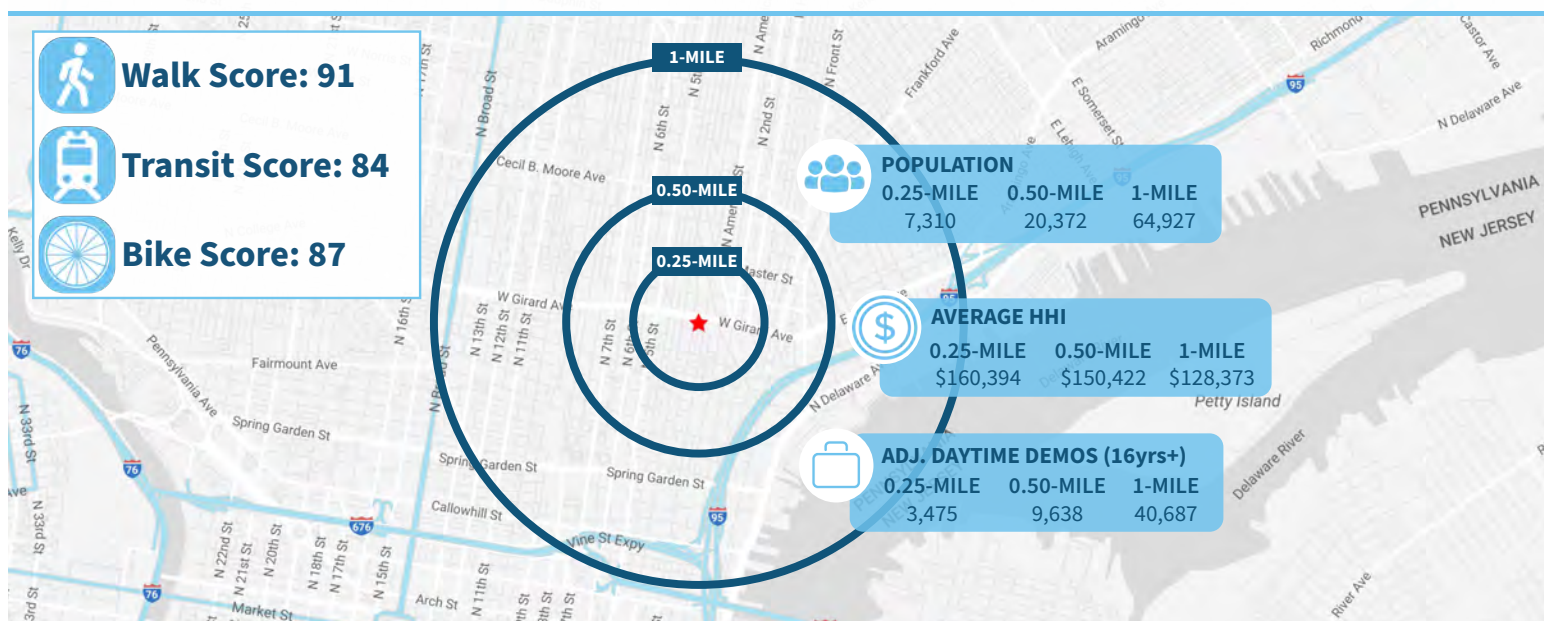
1BR

1BR



FOR LEASE: STOREFRONT RETAIL SPACE

310 W Girard Ave, Philadelphia, PA 19123

EQUITY CRE**RENDERING | 3RD ST & GIRARD AVE****Demographic Overview (0.25, 0.50, 1-mile radius)****The right space. The right move.****CMRE** CAPITAL MARKETS
REAL ESTATE NETWORK

Information concerning this offering is from sources deemed reliable but no warranty is made to the accuracy thereof and it is submitted subject to errors, omissions, changes of price or other conditions, prior to sale or lease or withdrawal without notice. Equity CRE is licensed in PA, NJ, & DE. Steve Jeffries, Conor Tunno, & Will Ciccarelli are licensed salespersons in PA.

06/25

MARKET AERIAL

310 West Girard Ave | Philadelphia, PA

