

FOR LEASE: RETAIL SPACE AVAILABLE

1210 Chestnut St | Midtown Village | Philadelphia, PA






PROPERTY HIGHLIGHTS

- Up to 10,000 SF of divisible ground floor retail space
- 47' of frontage on Chestnut Street
- Additional basement storage available
- Potential to subdivide into two distinct spaces
 - Chestnut Street Frontage: Traditional retail use
 - Sansom Street Frontage: Food & beverage opportunity

LOCATION DETAILS

- Located within two blocks of premier entertainment & nightlife destinations in Center City
- Opportunity to join growing restaurant & entertainment corridor on Sansom Street
- Surrounded by strong co-tenancy & constant 7-day foot traffic
- Dense demographics

	WALK SCORE	100
	TRANSIT SCORE	100
	BIKE SCORE	87

CONTACT

CONOR TUNNO
ctunno@equitycre.com
DIRECT 484.531.2004

STEVE JEFFRIES
sjeffries@equitycre.com
DIRECT 484.531.2250

WILL CICCARELLI
wcicarelli@equitycre.com
DIRECT 484.531.2209

FOR LEASE: RETAIL SPACE AVAILABLE

1210 Chestnut St | Midtown Village | Philadelphia, PA

CHESTNUT ST ENTRANCE



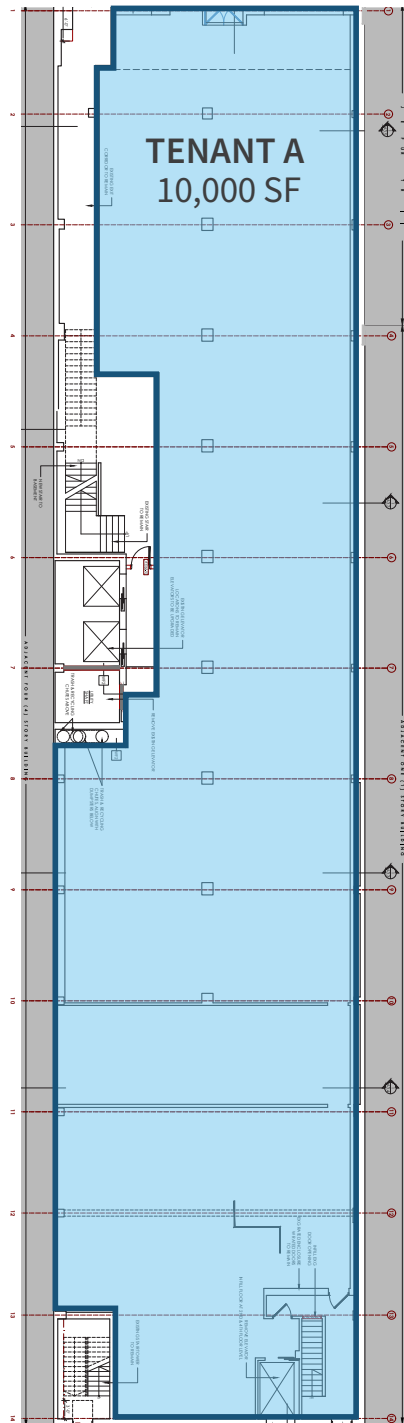
FOR LEASE: RETAIL SPACE AVAILABLE

1210 Chestnut St | Midtown Village | Philadelphia, PA

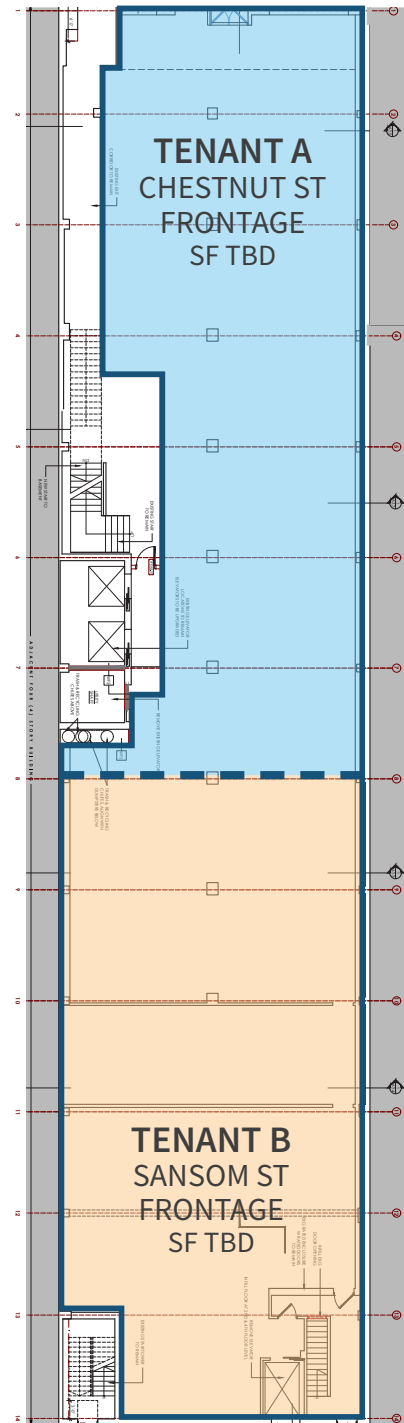
FLOOR PLANS

CHESTNUT ST

Scenario 1: Single Tenant



Scenario 2: Two Tenants



SANSOM ST

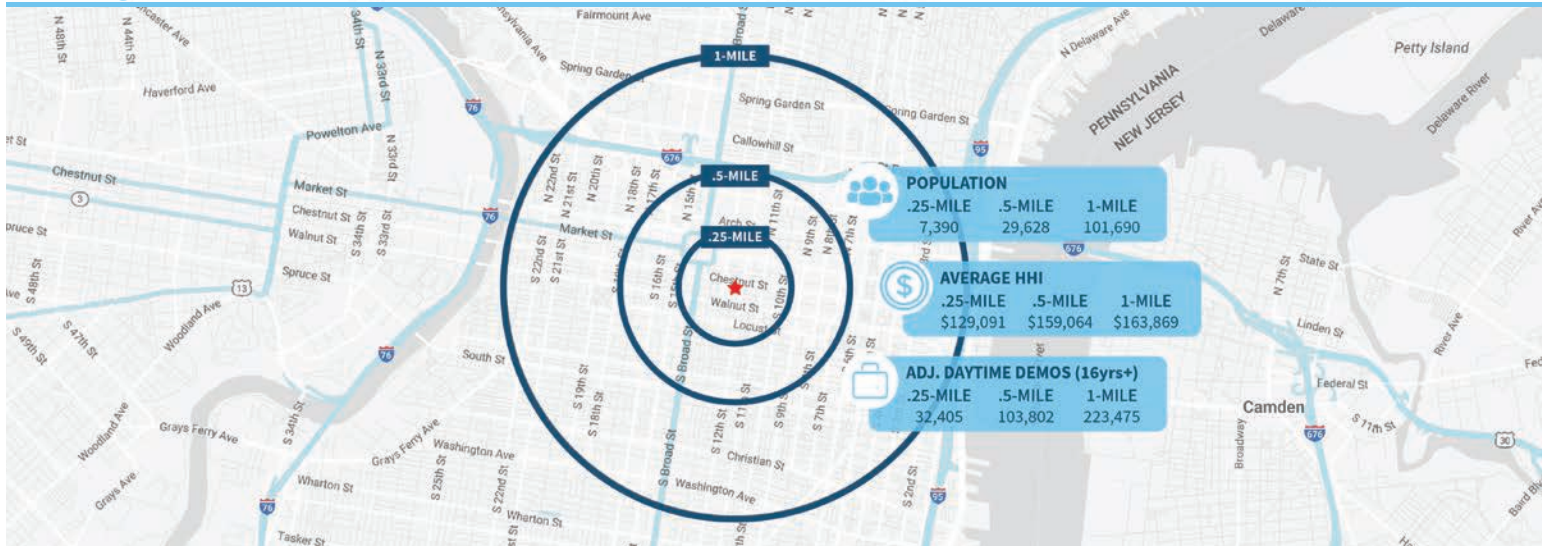
FOR LEASE: RETAIL SPACE AVAILABLE

1210 Chestnut St | Midtown Village | Philadelphia, PA



SITE
10,000 SF

Demographic Overview (0.25, 0.50, 1-mile radius)



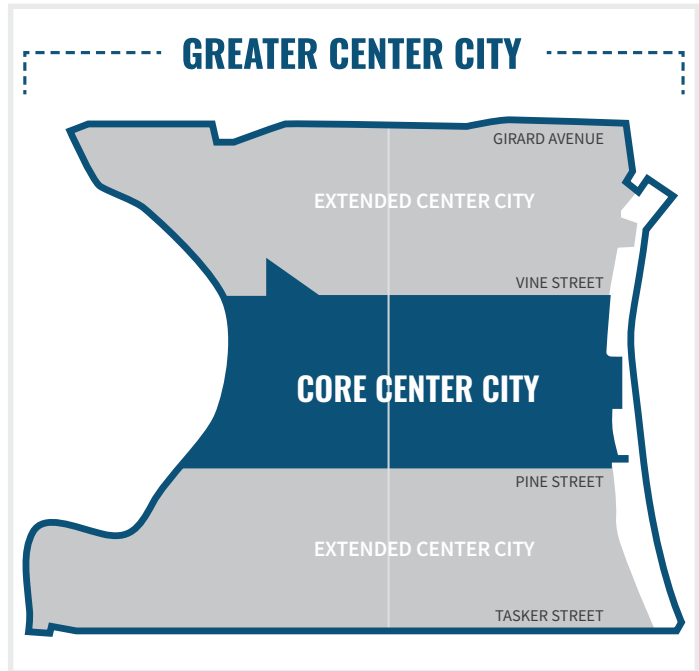
FOR LEASE: RETAIL SPACE AVAILABLE


1210 Chestnut St | Midtown Village | Philadelphia, PA

Center City Key Facts

- Center City maintains a steady retail occupancy rate of 83%, with nearly 1,792 retail businesses with a diverse mix of both national and local brands.
- The number of retailers has grown by 15% since 2019.
- New entertainment venues have transformed the retail landscape, offering experiential offerings beyond traditional shopping.
- Center City District's Open Streets initiative in September 2024 proved remarkably effective, with nearly 90% of businesses reporting increased foot traffic and a 68% average increase in sales.


(Center City District)



 **83%**
storefronts occupied

 **815**
retailers

 **983**
food & beverage

 **299,956**
jobs in Philadelphia



The right space. The right move.



Information concerning this offering is from sources deemed reliable but no warranty is made to the accuracy thereof and it is submitted subject to errors, omissions, changes of price or other conditions, prior to sale or lease or withdrawal without notice. Equity CRE is licensed in PA, NJ, & DE. Shaun Lyons & Jake Doyle are licensed salespersons in PA.

05/25

RETAIL AERIAL



TRADER JOE'S

MAGGIANO'S
LITTLE ITALY

Pennsylvania
Convention Center
PHILADELPHIA

CITY HALL
DILWORTH PARK

Marriott

READING
TERMINAL
MARKET

Hard Rock
CAFE
DUNKIN'

SEPTA
Jefferson Station

FASHION DISTRICT
PHILADELPHIA

FedEx Office
Print & Ship Services
T Mobile

THE RITZ-CARLTON

LOEWS
HOTELS

TJ-maxx IROH HILL
BREWERY & RESTAURANT
AT&T CITY FITNESS

CVS ROSS
pharmacy DRESS FOR LESS

honeygrow

La COLOMBE
COFFEE ROASTERS

W
HOTELS

insomnia
cookies
McCORMICK & SCHMICK'S
SEAFOOD RESTAURANTS

FOGO DE
CHÃO

BRÜ

SITE

7
ELEVEN

DUNKIN'

Chestnut St

THE CAPITAL
GRILL
HipCityVeg

BARCADE

pramella
BARBUZZO

WICKED WOLF

Jefferson
University and Hospitals

UNIVERSITY CITY

AlpenRose
DOUBLE KNOT
Pearl & Mary
SAMPAN.

VanLeeuwen

Barstool
SANSOM ST

Goldie

planet
fitness
MilkBoy
SHAKE SHACK

Sansom St

De Frisco's
DOUBLE EAGLE STEAK HOUSE
ATTICO
CAMBRIA
hotels & suites

El Vez
Charlie was a sinner.
Kilwins
CHOCOLATES FUDGE ICE CREAM

Starbucks
CVS
pharmacy

Walnut St

BelleVue
HOTEL

CHIPOTLE
MEXICAN GRILL

Aerial Source: Google Earth Pro