

## FOR LEASE: MEDICAL/OFFICE SPACE

91 N York Road | Willow Grove, PA

EQUITY CRE



### PROPERTY FEATURES & DETAILS

- 4,500-9,000 SF Class-A Office/Medical space located on the 2nd floor
- 2 units (can demise)
- Building signage available on a highly trafficked intersection
- Attached parking garage
- Delivery/drop-off lane
- Located in Willow Grove adjacent to SEPTA's Willow Grove Station
- Only 1.5 miles from the PA Turnpike
- Co-Tenants: Jefferson Health - Moss Rehab Institute for Brain Health (MRIBH)
- Brand new mixed-use development with high-end amenities available to tenants (pool, fitness center, business center, courtyard, clubhouse & more)
- Private entrance & separate elevators (off of Davisville Road)



TRAFFIC COUNT | **29.1K**



# OF UNITS | **2**



TOTAL SF | **9,000 SF**

### CONTACT

**STEVE JEFFRIES**

sjeffries@equitycre.com

DIRECT 484.531.2250

**JAKE DOYLE**

jdoyle@equitycre.com

DIRECT 484.531.2176

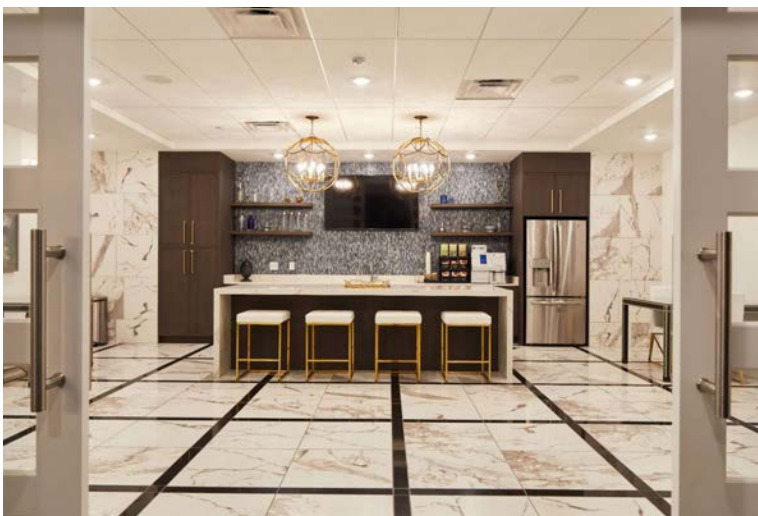
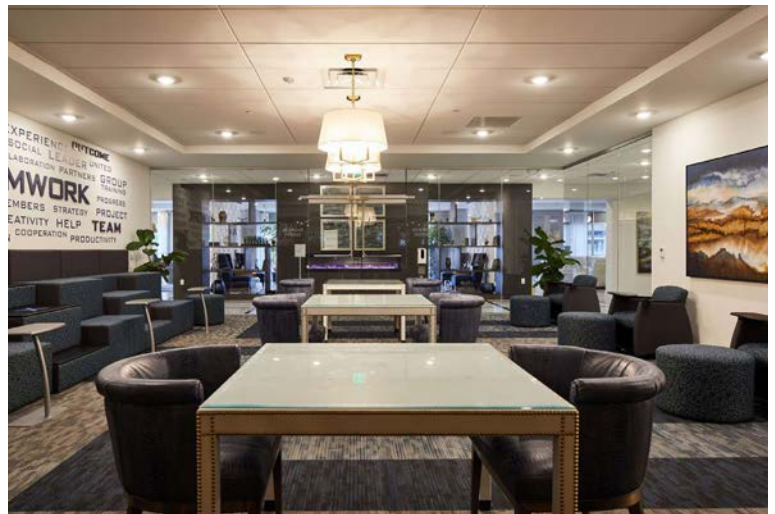
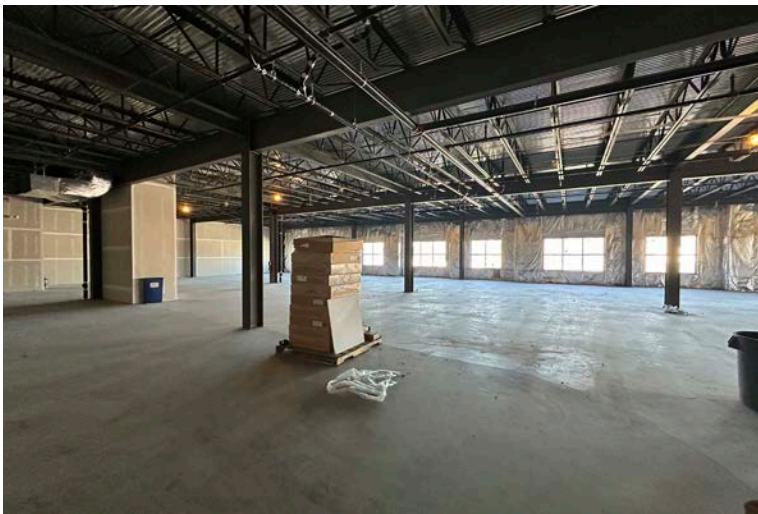
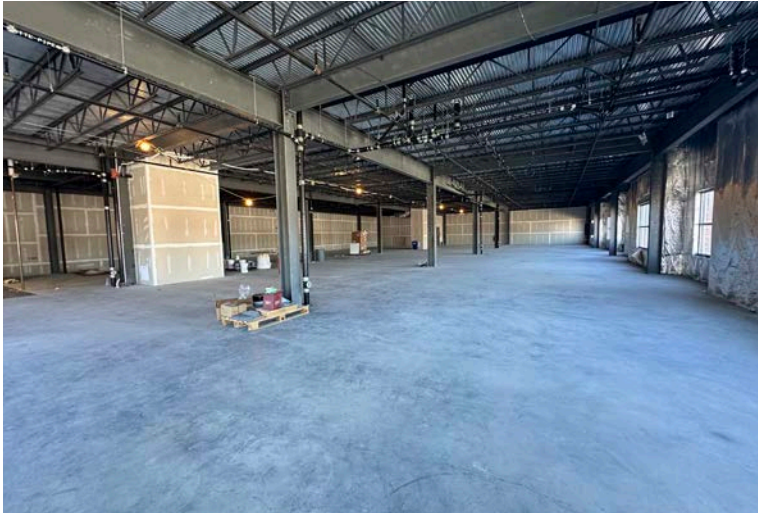


## FOR LEASE: MEDICAL/OFFICE SPACE

91 N York Road | Willow Grove, PA

EQUITY CRE

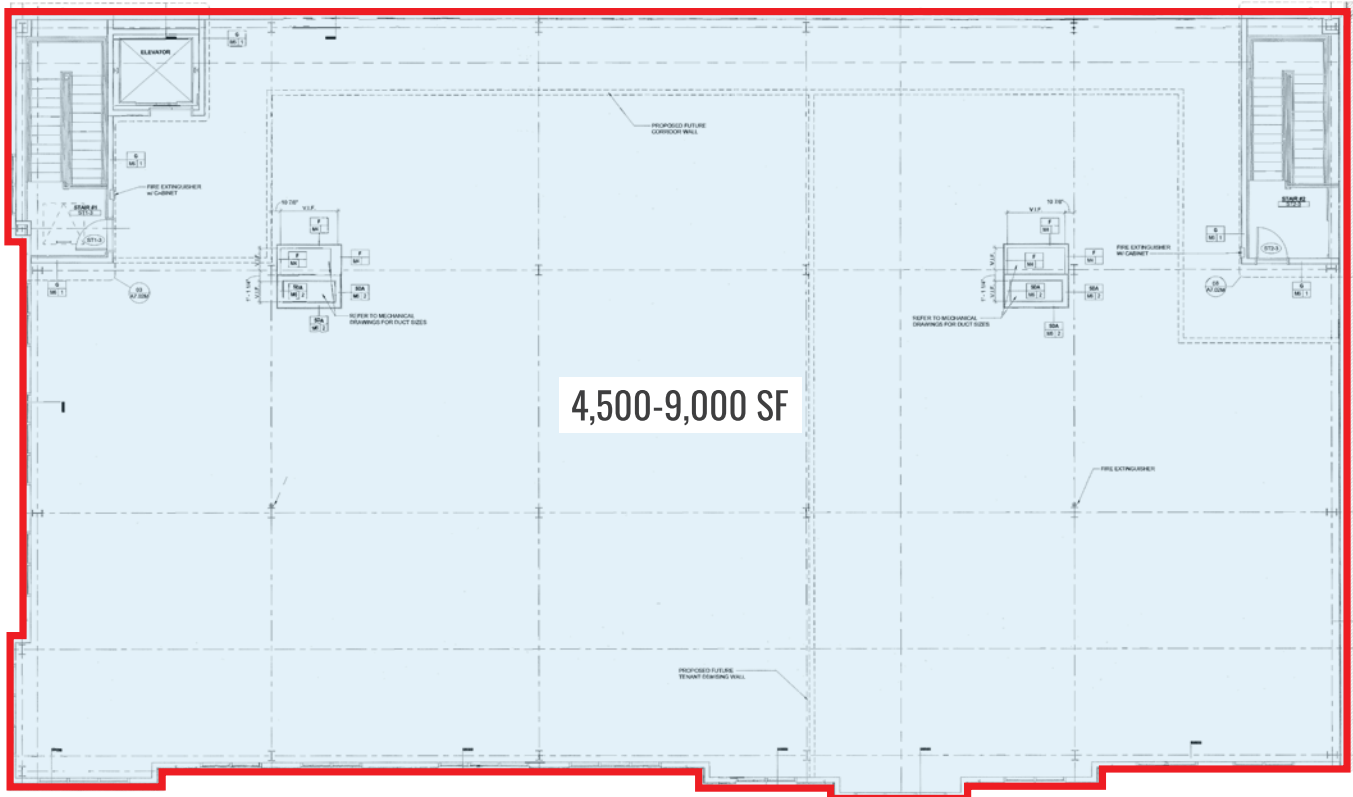
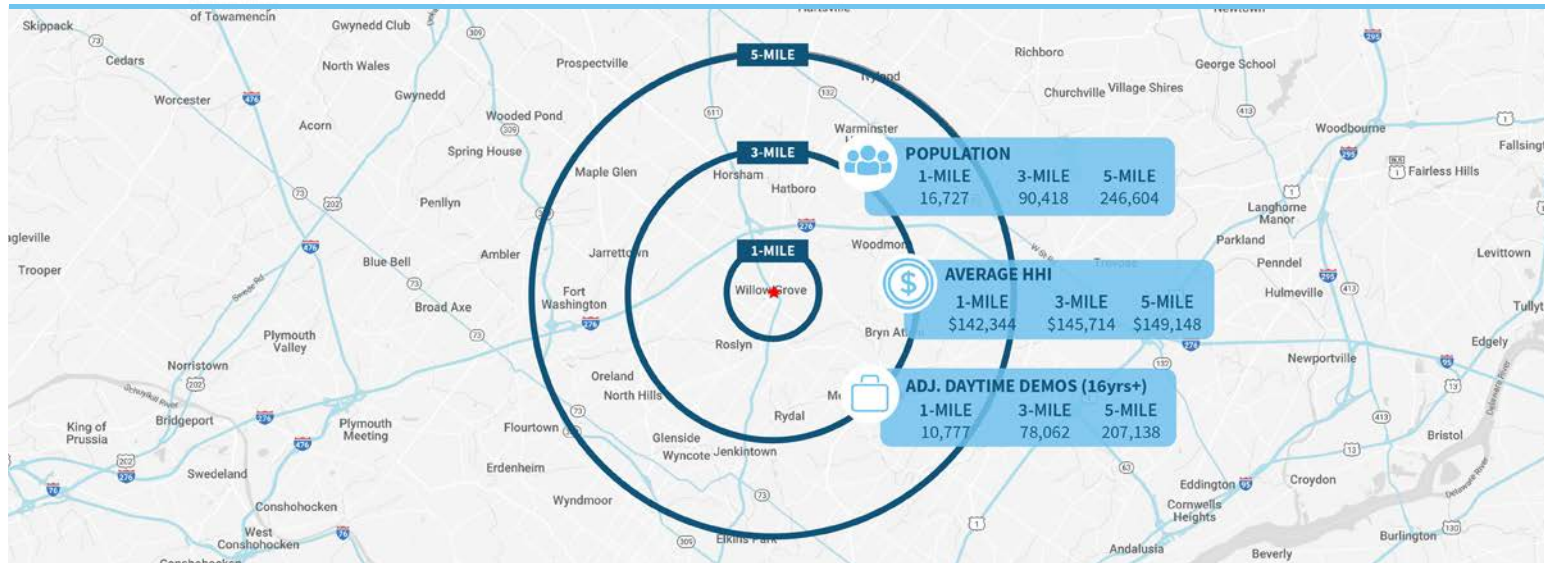
### OFFICE SPACE





**FOR LEASE: MEDICAL/OFFICE SPACE**

91 N York Road | Willow Grove, PA

**EQUITY CRE****FLOOR PLANS****Demographic Overview (1, 3, 5-mile radius)****The right space. The right move.****CMRE** CAPITAL MARKETS  
REAL ESTATE NETWORK

Information concerning this offering is from sources deemed reliable but no warranty is made to the accuracy thereof and it is submitted subject to errors, omissions, changes of price or other conditions, prior to sale or lease or withdrawal without notice. Equity CRE is licensed in PA, NJ, & DE. Steve Jeffries and Jake Doyle are licensed in PA.

04/22



# RETAIL AERIAL



Compliments of:

EQUITY CRE

Plymouth Meeting, PA ■ Philadelphia, PA ■ 610.645.7700 ■ [www.equitycre.com](http://www.equitycre.com)