

FOR LEASE: OFFICE/RETAIL SPACE

209 Church Street | Phoenixville, PA

EQUITY CRE



PROPERTY HIGHLIGHTS

- 464 SF office/retail space
- Located in the heart of the Borough of Phoenixville
- Walking distance to the Colonial Theater & the Schuylkill River Trail
- Zoning: TC-Town Center (Phoenixville Borough)
- Street parking & multiple public lots within a one block radius
- Walk Score: 90
- Ample lighting
- Large front window
- Baseboard heating

CONTACT

STEVE JEFFRIES

sjeffries@equitycre.com

DIRECT 484.531.2250

JAKE DOYLE

jdoyle@equitycre.com

DIRECT 484.531.2176

SHAUN LYONS

shaunlyons5454@gmail.com

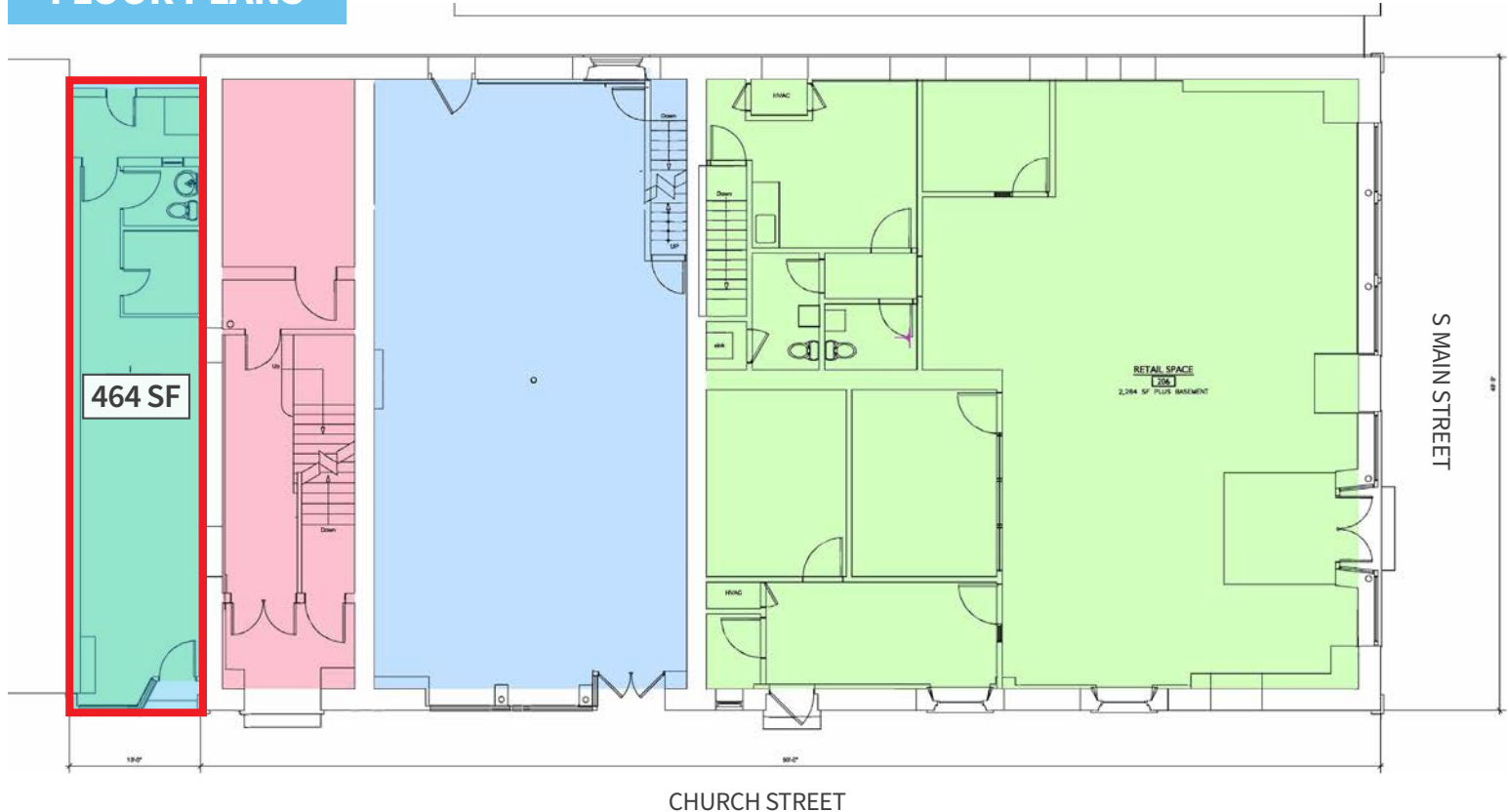
DIRECT 267.707.3347

FOR LEASE: OFFICE/RETAIL SPACE

209 Church Street | Phoenixville, PA

EQUITY CRE

FLOOR PLANS



FOR LEASE: OFFICE/RETAIL SPACE

209 Church Street | Phoenixville, PA

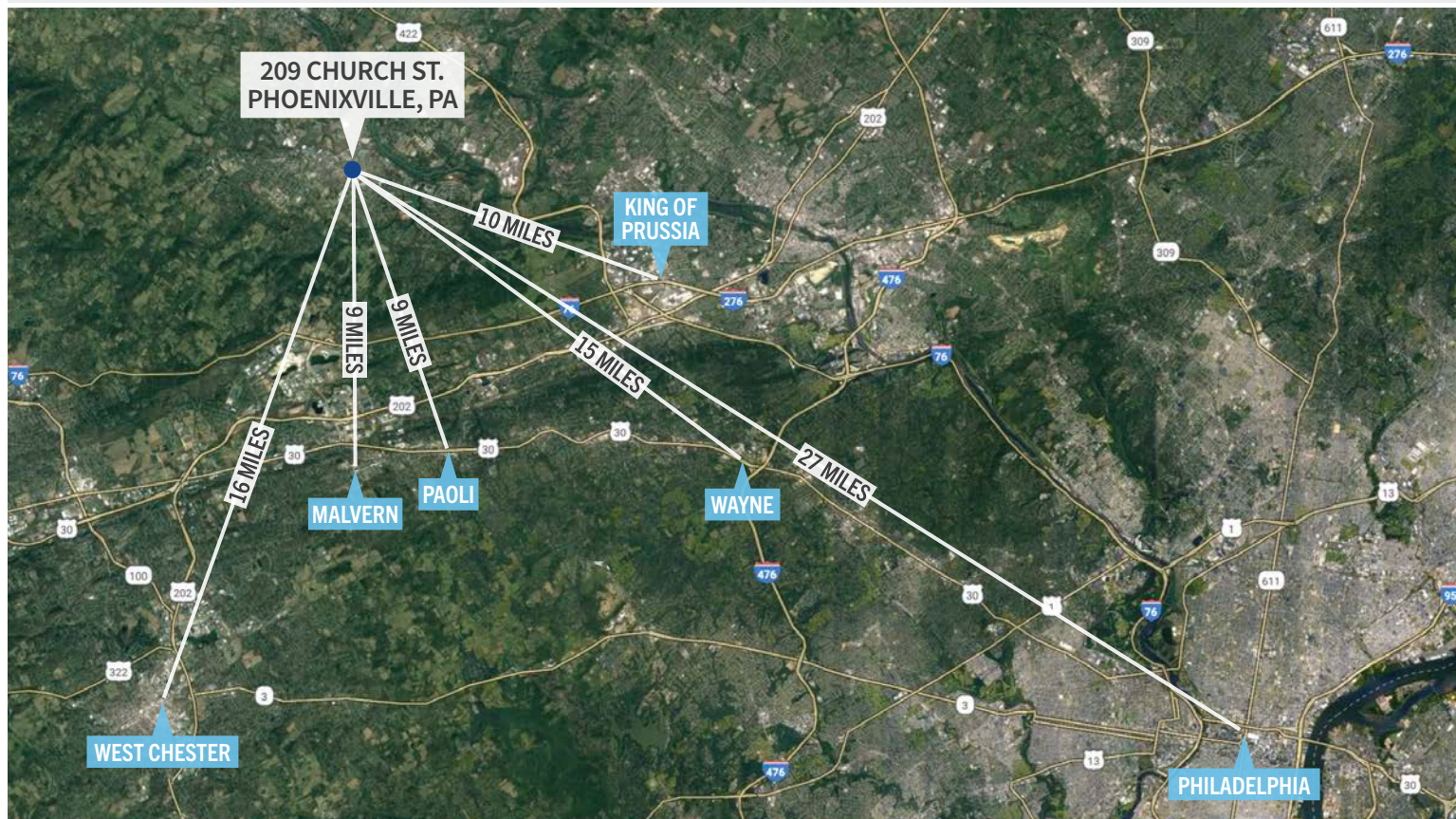
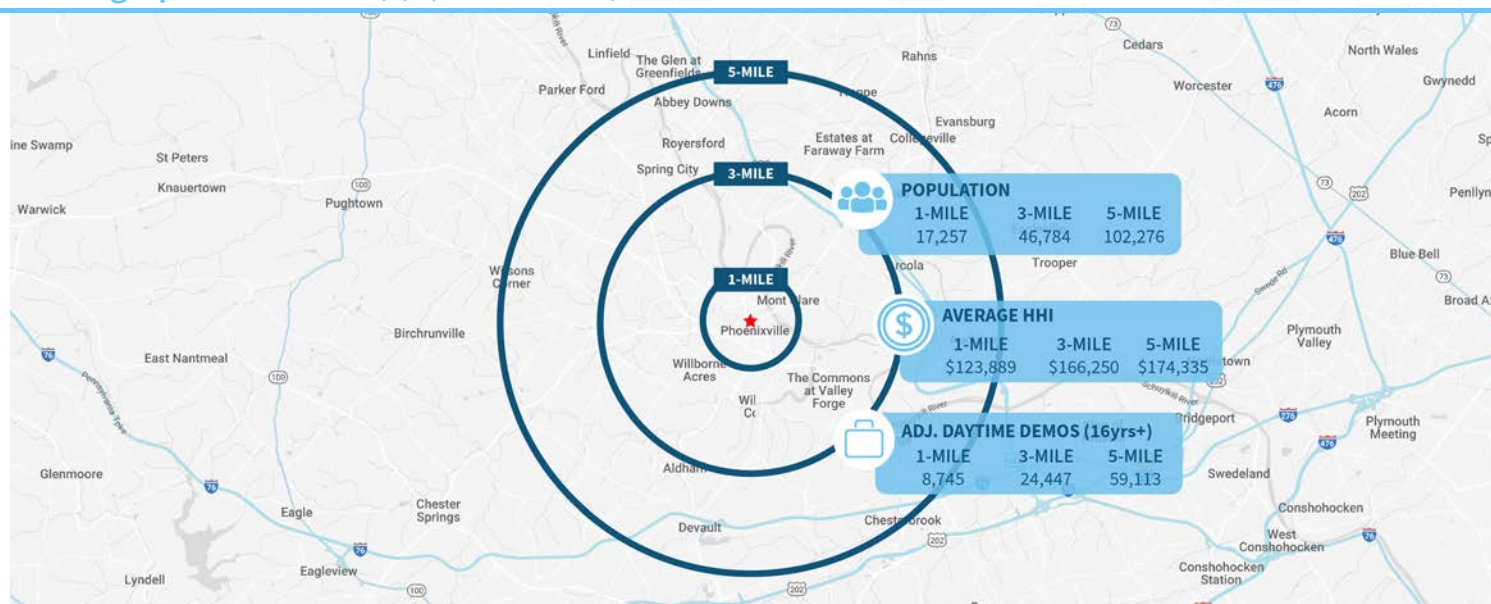
EQUITY CRE

RETAIL SPACE



FOR LEASE: OFFICE/RETAIL SPACE

209 Church Street | Phoenixville, PA

EQUITY CRE**Demographic Overview (1, 3, 5-mile radius)****The right space. The right move.****CMRE** CAPITAL MARKETS
REAL ESTATE NETWORK

Information concerning this offering is from sources deemed reliable but no warranty is made to the accuracy thereof and it is submitted subject to errors, omissions, changes of price or other conditions, prior to sale or lease or withdrawal without notice. Equity CRE is licensed in PA, NJ, & DE. Shaun Lyons, Steve Jeffries and Jake Doyle are licensed in PA.

05/25



LOCATION AERIAL

23

EQUITY CRE

Giant
FINE WINE & GOOD SPIRITS

DOLLAR TREE
PET SUPPLIES PLUS
Minus the hassle.

Starbucks

Bank of America

Wawa **CVS pharmacy**

McDonald's

Walgreens

NUDY'S c-a-f-e

planet fitness

Sly Fox BREWING COMPANY

TruMark Financial

Phoenixville Hospital
TOWER HEALTH
Advancing Health. Transforming Lives.

PNC **AT&T**

7-Eleven

the YMCA

STABLE 12

FOODERY
GREAT BEERS FROM
AROUND THE WORLD

SEDONA TAPROOM

Vintner's Table

CHIKARA

BLUEBIRD DISTILLING

SOUTHERN BREWING CO.

SOLTANE CAFE

SITE

23

EQUITY CRE

UNIVERSITY OF VALLEY FORGE

PHOENIXVILLE AREA SCHOOL DISTRICT