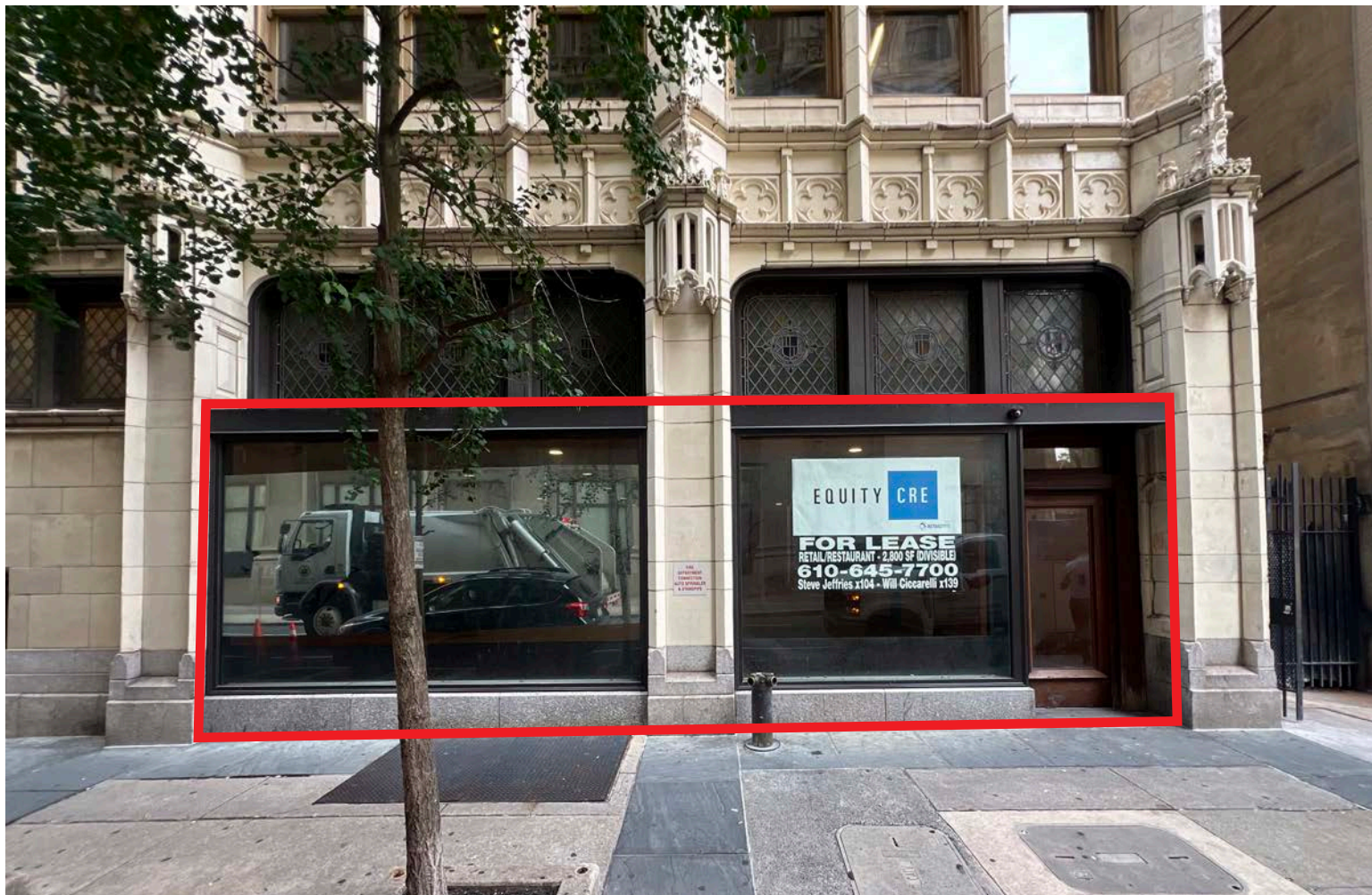


FOR LEASE: RETAIL SPACE AVAILABLE

100 N 17th St | Center City | Philadelphia, PA

EQUITY CRE



PROPERTY FEATURES & DETAILS

- ±2,800 SF of retail space
- Steps from the Comcast Center & Suburban Station
- Located within the heart of the Center City Business District
- Rare double wide glass storefront
- Excellent branding and signage opportunities

NEIGHBORING TENANTS



CONTACT

STEVE JEFFRIES

sjeffries@equitycre.com

DIRECT 484.531.2250

WILL CICCARELLI

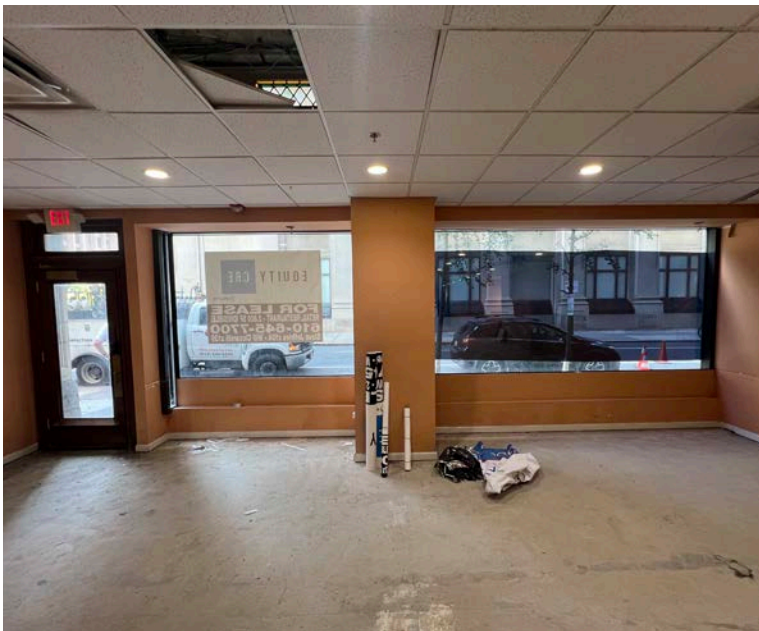
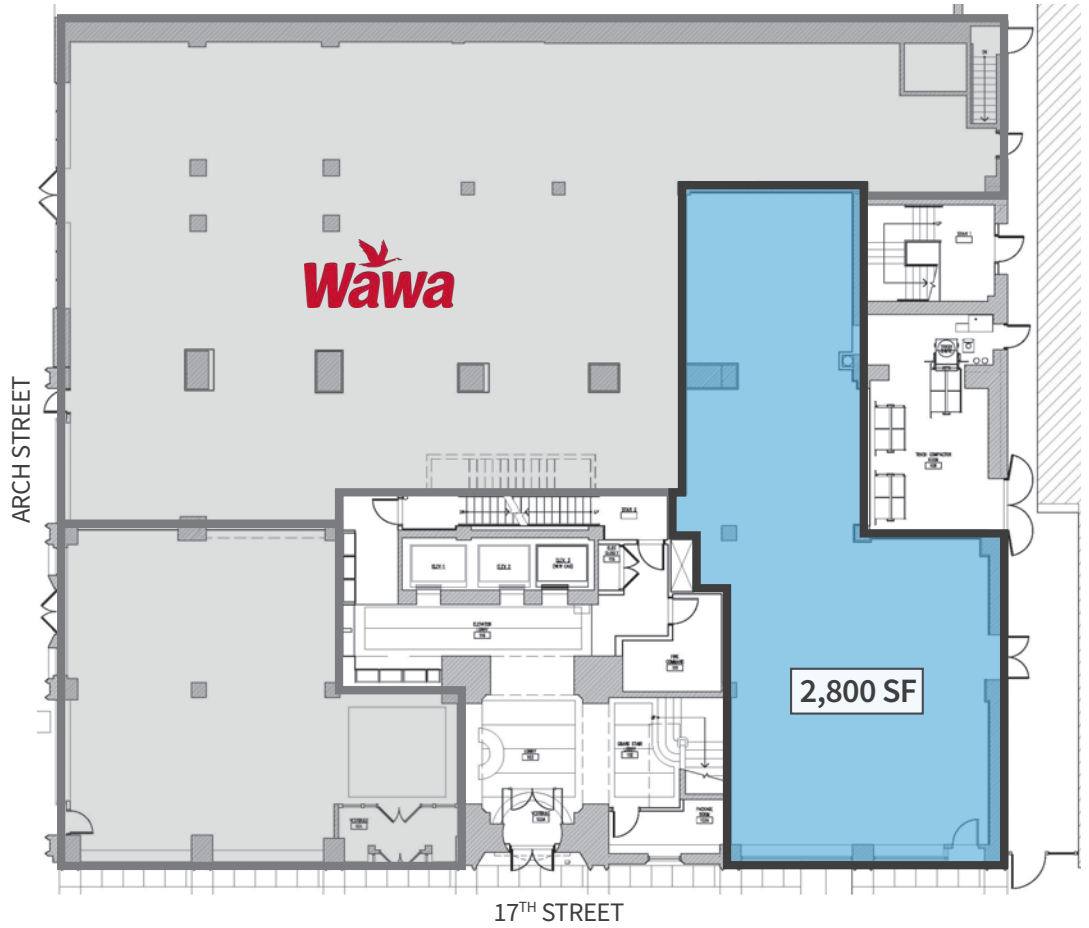
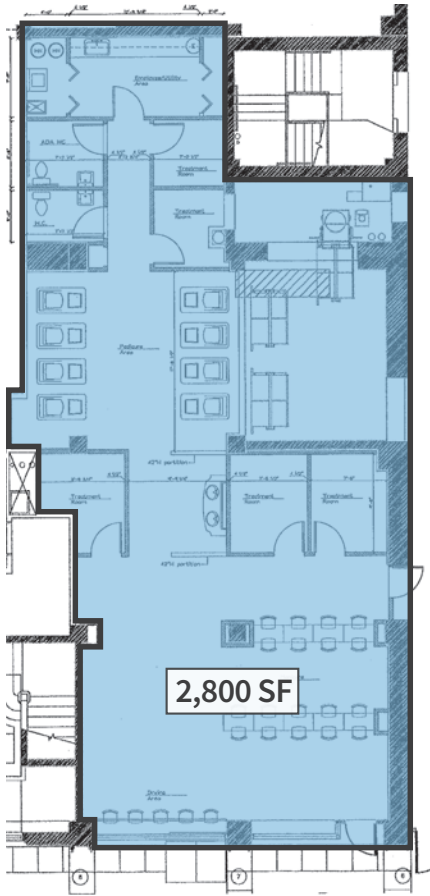
wciccarelli@equitycre.com

DIRECT 484.531.2209

FOR LEASE: RETAIL SPACE AVAILABLE

100 N 17th St | Center City | Philadelphia, PA

FLOOR PLANS



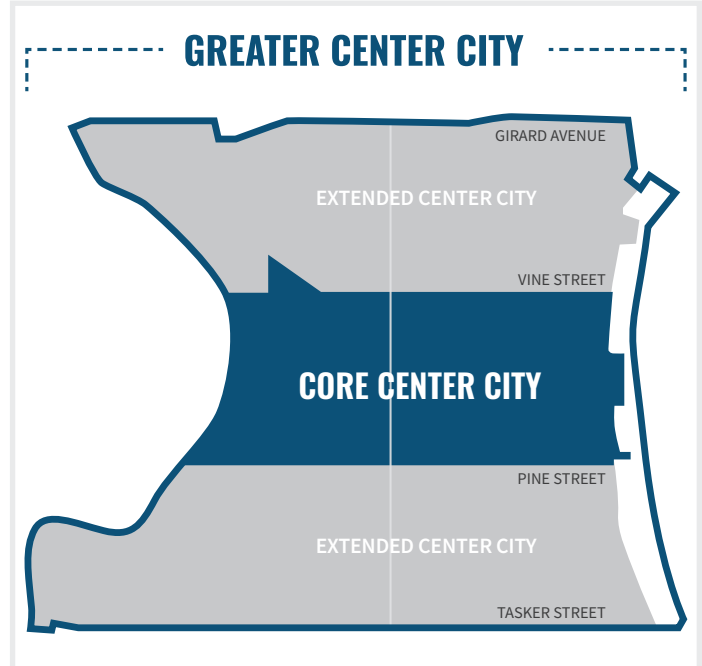
FOR LEASE: RETAIL SPACE AVAILABLE

100 N 17th St | Center City | Philadelphia, PA

Center City Key Facts


- Center City maintains a steady retail occupancy rate of 83%, with nearly 1,792 retail businesses with a diverse mix of both national and local brands.
- The number of retailers has grown by 15% since 2019.
- New entertainment venues have transformed the retail landscape, offering experiential offerings beyond traditional shopping.
- Center City District's Open Streets initiative in September 2024 proved remarkably effective, with nearly 90% of businesses reporting increased foot traffic and a 68% average increase in sales.

(Center City District)



 **84.5%**
storefronts occupied

 **235**
new retailers

 **227**
full service restaurants

 **279,465**
jobs in Philadelphia



FOR LEASE: RETAIL SPACE AVAILABLE
 100 N 17th St | Center City | Philadelphia, PA



Demographic Overview (0.25, 0.50, 1-mile radius)



The right space. The right move.



Information concerning this offering is from sources deemed reliable but no warranty is made to the accuracy thereof and it is submitted subject to errors, omissions, changes of price or other conditions, prior to sale or lease or withdrawal without notice. Equity CRE is licensed in PA, NJ, & DE. Steve Jeffries is licensed in PA.

RETAIL AERIAL



SITE

Compliments of:

EQUITY CRE

531 W. Germantown Pike, Suite 103 ■ Plymouth Meeting, PA 19462 ■ 610.645.7700 ■ www.equitycre.com