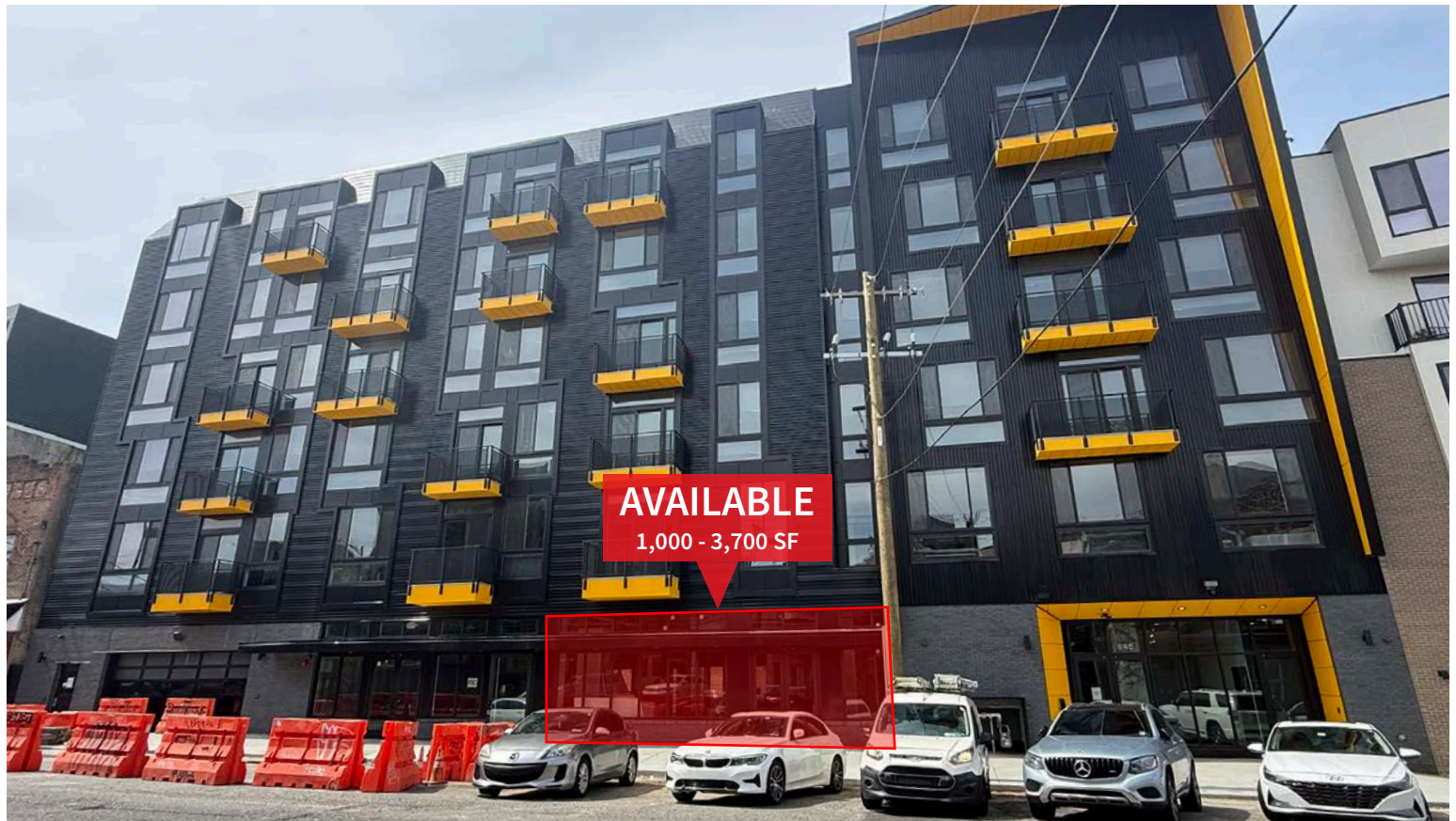


FOR LEASE: ±1,000 - 3,700 SF RETAIL SPACE

814 N. 2nd St, Philadelphia, PA

EQUITY CRE



PROPERTY FEATURES & DETAILS

- Up to 3,700 SF of retail space (can demise)
- Ground floor of a new 78 unit residential development
- Easy access to public transportation, I-95 & 676
- Ample 3 Hour free parking along 2nd Street
- In the heart of the 2nd Street Corridor with excellent access and visibility
- Outdoor Seating: Private exterior patio in rear of space
- Ceiling Heights: 12' 4" clear

Walk Score: 93 | Transit Score: 75 | Bike Score: 96

CONTACT

STEVE JEFFRIES

sjeffries@equitycre.com

DIRECT 484.531.2250

CONOR TUNNO

ctunno@equitycre.com

DIRECT 484.531.2004

NEIGHBORING TENANTS



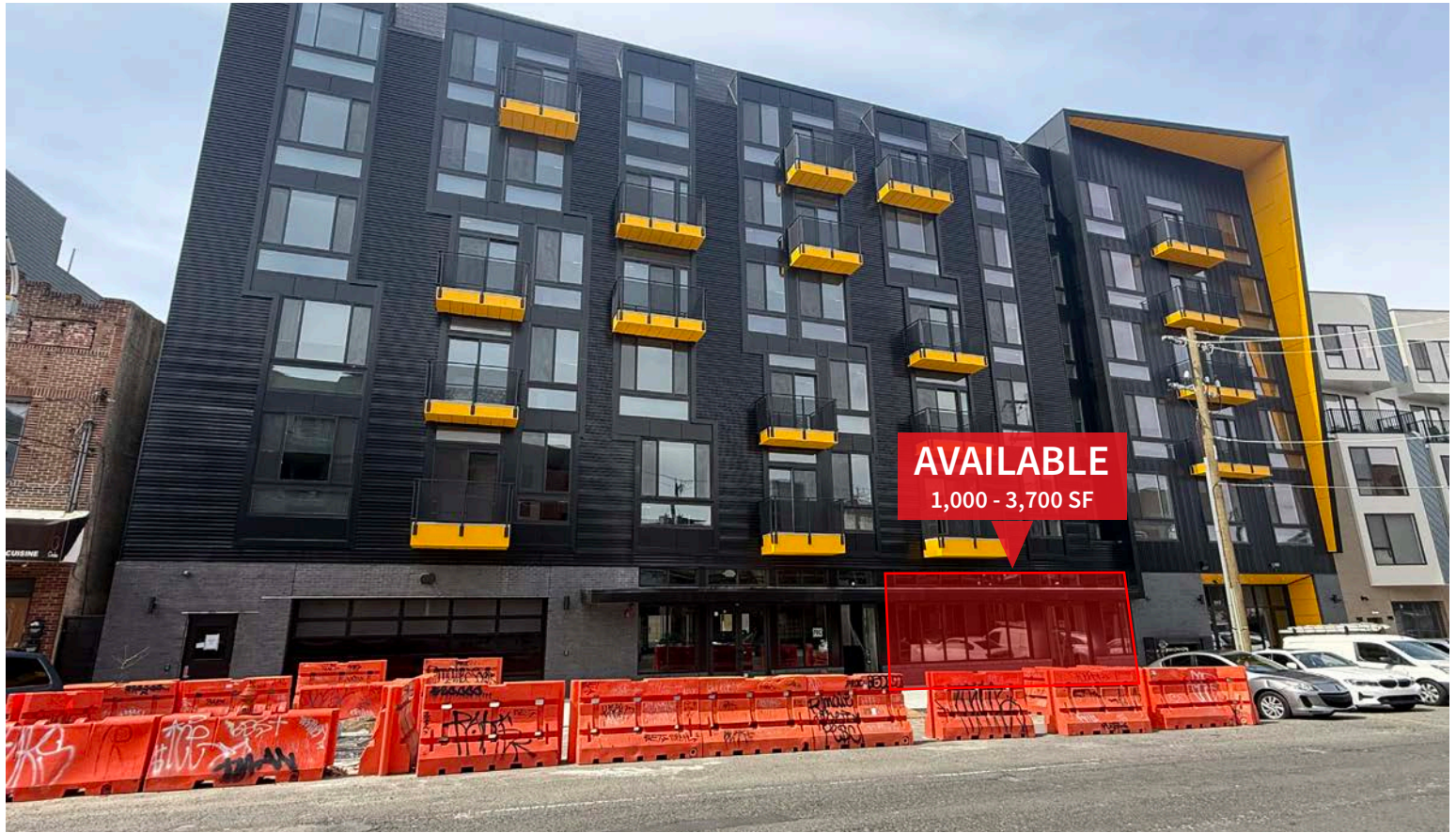
CESCAPHÉ



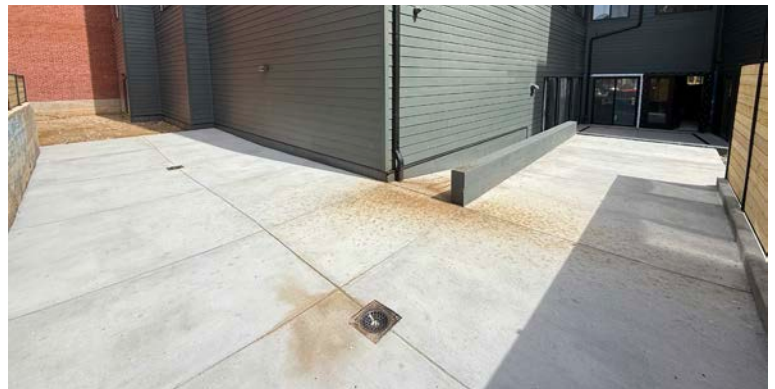
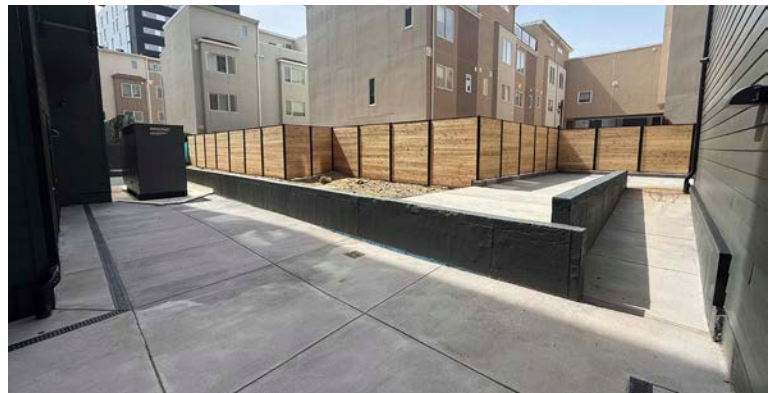
FOR LEASE: ±1,000 - 3,700 SF RETAIL SPACE

814 N. 2nd St, Philadelphia, PA

EQUITY CRE

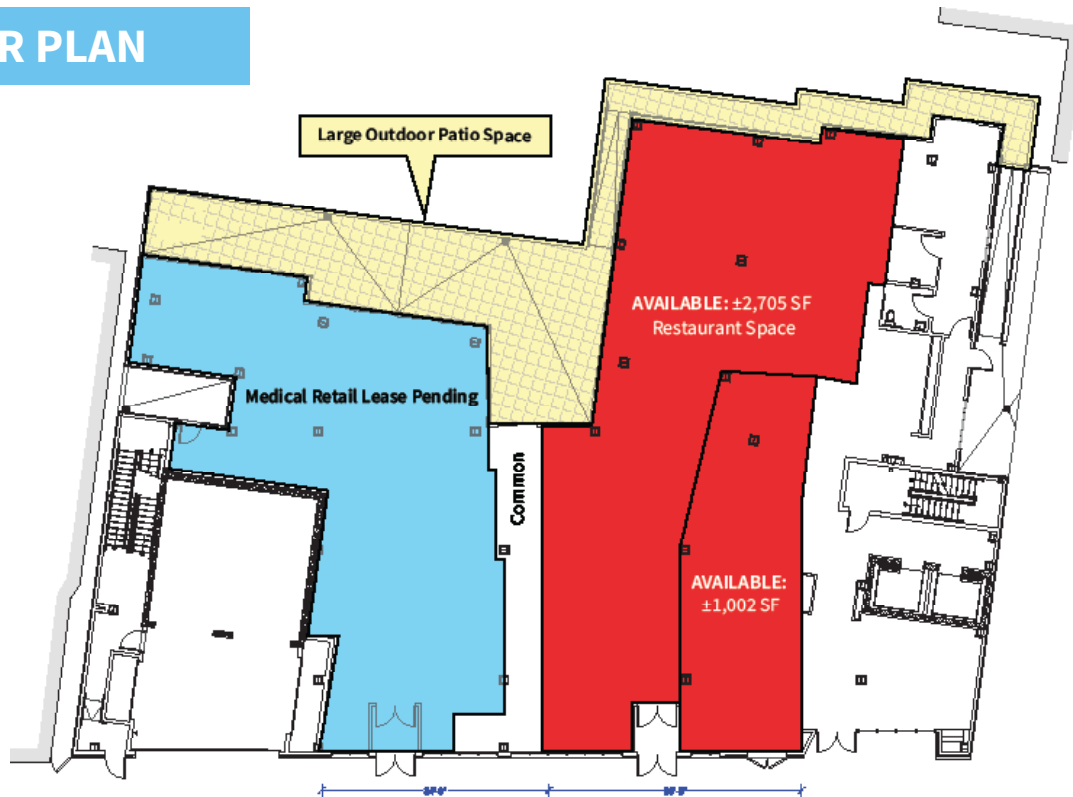


REAR PATIO



FOR LEASE: ±1,000 - 3,700 SF RETAIL SPACE

814 N. 2nd St, Philadelphia, PA

EQUITY CRE**FLOOR PLAN****Demographic Overview (0.25, 0.5, 1-mile radius)****The right space. The right move.**

Information concerning this offering is from sources deemed reliable but no warranty is made to the accuracy thereof and it is submitted subject to errors, omissions, changes of price or other conditions, prior to sale or lease or withdrawal without notice. Equity CRE is licensed in PA, NJ, & DE. Steve Jeffries & Conor Tunno are licensed salespersons in PA.

04/25

MARKET AERIAL

814 N 2nd St, Philadelphia | Philadelphia County, PA



Aerial Source: Google Earth Pro & Traffic Count Source: Regis Online (24)