

FOR LEASE: ±800 SF BASEMENT BOUTIQUE SPACE

1506 Sansom St, Philadelphia, PA 19102

EQUITY CRE



PROPERTY FEATURES & DETAILS

- Turnkey/2nd gen salon space
- Prime location within a high-traffic dining and entertainment corridor
- Ideal for boutique retail use
- Steps from a dense mix of offices, residential buildings, and hotels
- Excellent visibility and accessibility from multiple public transit lines
- Surrounded by top hospitality operators including Mission Taqueria, Oyster House, Harp & Crown, and Giuseppe & Sons

LOCATION DETAILS

- High foot traffic fueled by consistent daytime office activity and strong evening dining crowds
- Walkable to a wide range of restaurants, bars, fast casual eateries, and coffee shops
- Nearby businesses create strong lunch, happy hour, and dinner demand
- Located within blocks of City Hall, Suburban Station, and Philadelphia's business corridor



Walk Score

100



Transit Score

100



Bike Score

87

CONTACT

WILL CICCARELLI

wcicarelli@equitycre.com

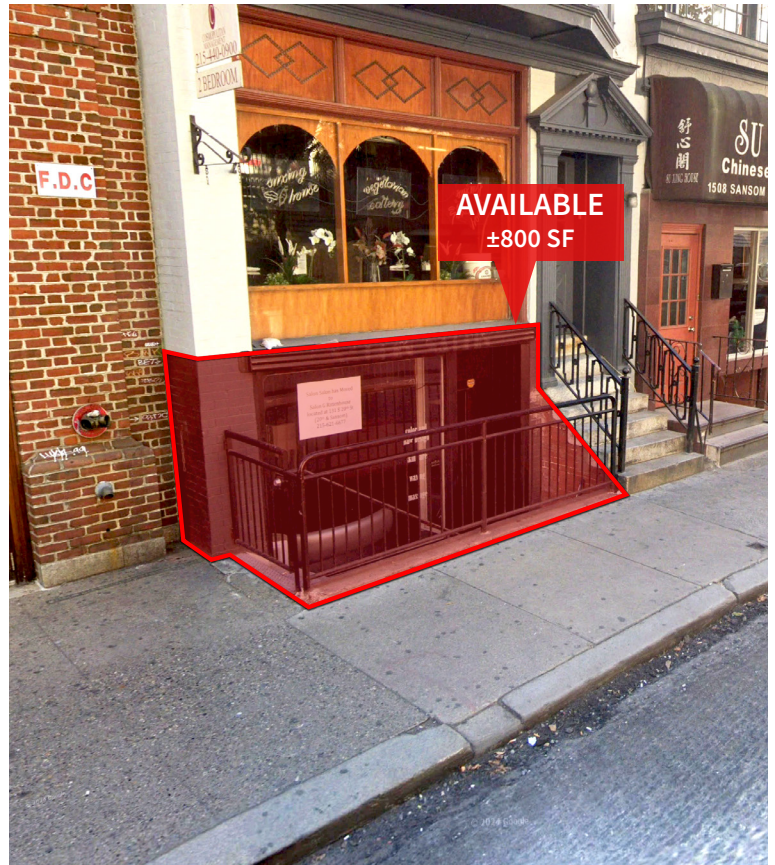
DIRECT 484.531.2209

FOR LEASE: ±800 SF BASEMENT BOUTIQUE SPACE

1506 Sansom St, Philadelphia, PA 19102

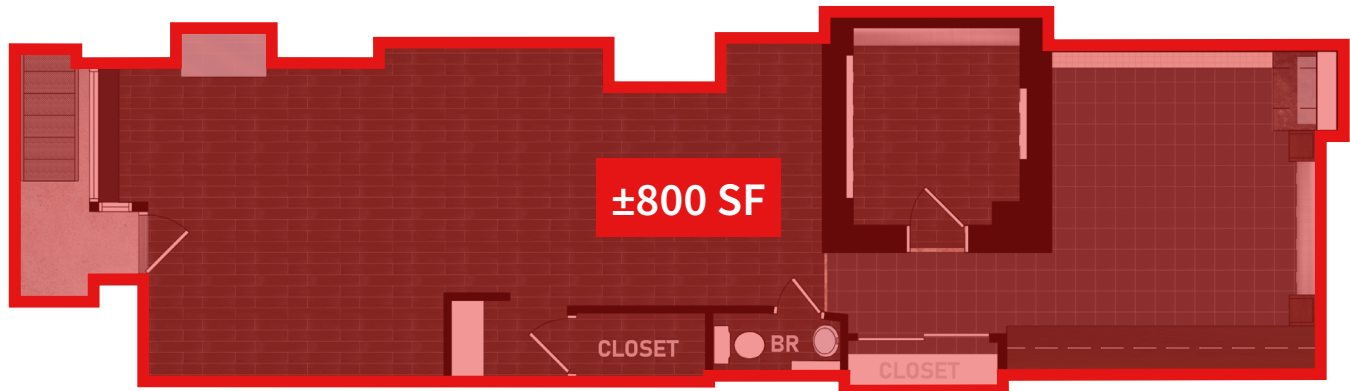
EQUITY CRE

INTERIOR



FOR LEASE: ±800 SF BASEMENT BOUTIQUE SPACE

1506 Sansom St, Philadelphia, PA 19102

EQUITY CRE**FLOOR PLAN****Demographic Overview (0.25, 0.5, 1-mile radius)****The right space. The right move.****CMRE CAPITAL MARKETS**
REAL ESTATE NETWORK

Information concerning this offering is from sources deemed reliable but no warranty is made to the accuracy thereof and it is submitted subject to errors, omissions, changes of price or other conditions, prior to sale or lease or withdrawal without notice. Equity CRE is licensed in PA, NJ, & DE. William Ciccarelli is a licensed salesperson in PA.

04/25

MARKET AERIAL

1526 Sansom Street | Philadelphia, PA

