

## FOR LEASE: CORNER RETAIL PAD SITE/BUILDING

623 E Gay Street | West Chester, PA

EQUITY CRE



### PROPERTY HIGHLIGHTS

- Corner retail pad site
- Building Size: 2,600 SF
- Lot Size: 35,800 SF (.82 Acres)
- Drive-thru
- Frontage on Gay Street
- Zoning: C-5



### LOCATION OVERVIEW

- Located in the Borough of West Chester in Chester County
- West Goshen Township
- West Chester Area School District
- Downtown West Chester is comprised of bars, restaurants, boutiques and is the home to West Chester University

### CONTACT

**SHAUN LYONS**

shaunlyons5454@gmail.com

DIRECT 267.707.3347

**JAKE DOYLE**

jdoyle@equitycre.com

DIRECT 484.531.2176

**STEVE JEFFRIES**

sjeffries@equitycre.com

DIRECT 484.531.2250



**FOR LEASE: CORNER RETAIL PAD SITE/BUILDING**

623 E Gay Street | West Chester, PA

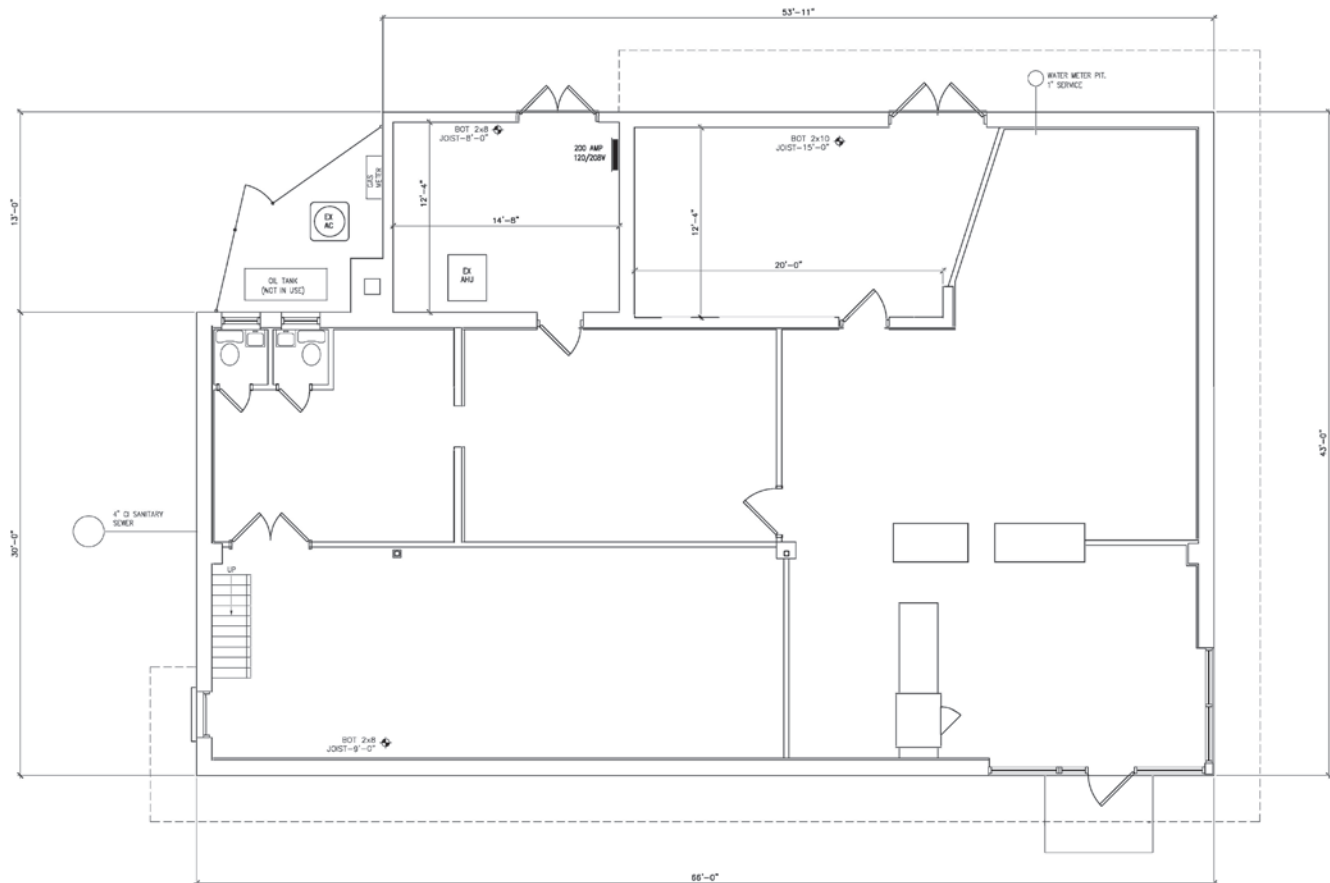
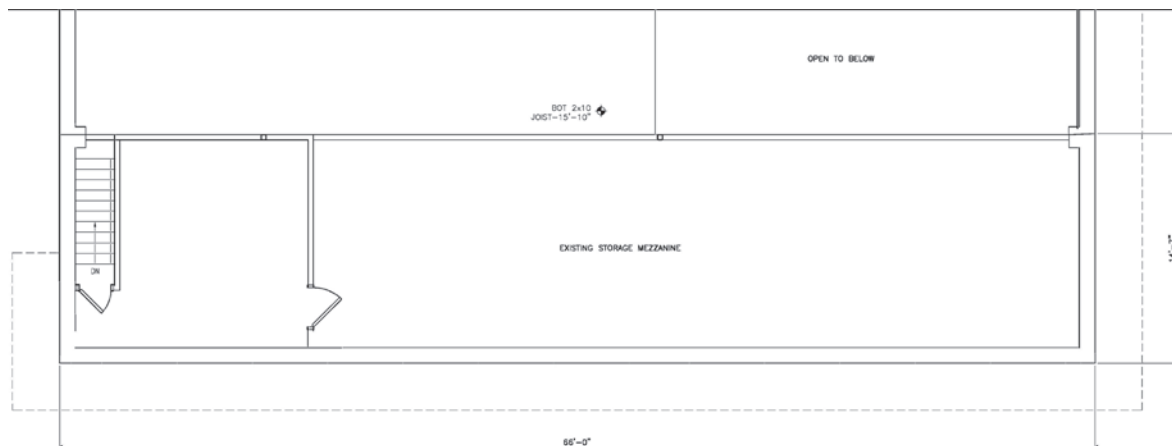
EQUITY CRE

**BUILDING EXTERIOR**



**FOR LEASE: CORNER RETAIL PAD SITE/BUILDING**

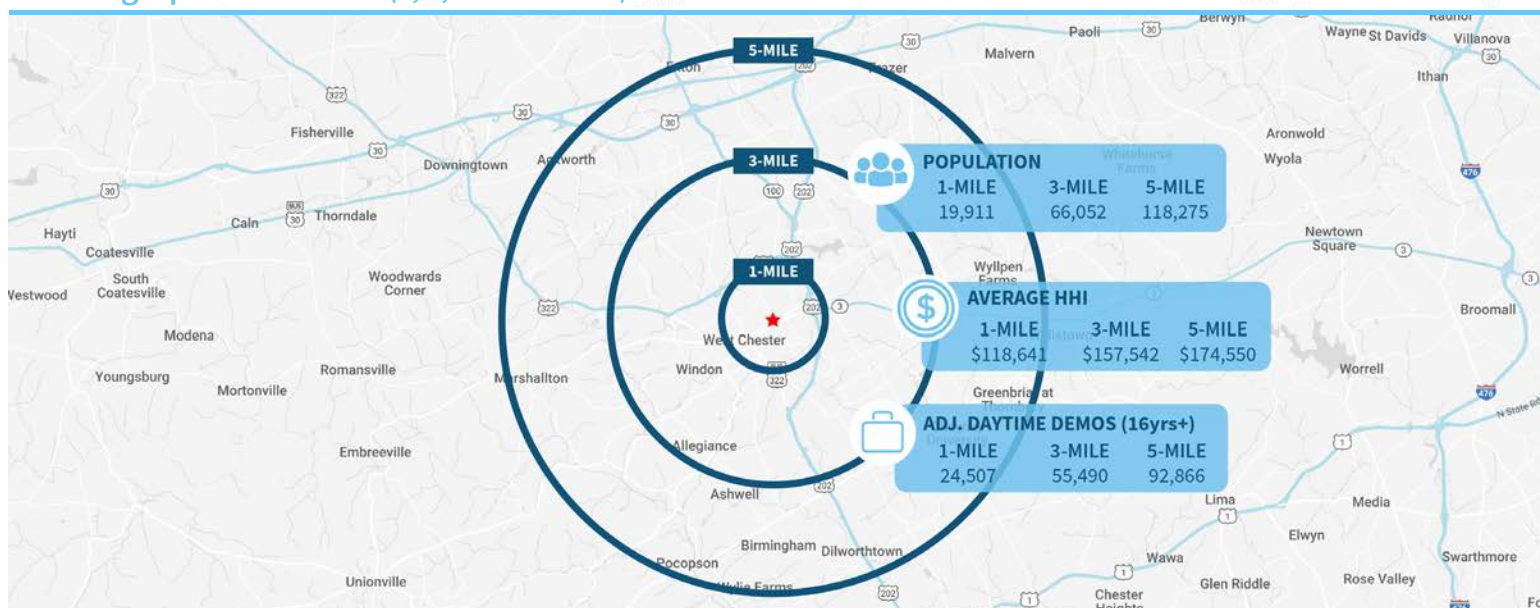
623 E Gay Street | West Chester, PA

**EQUITY CRE****FLOOR PLANS****1st Floor****2nd Floor**



**FOR LEASE: CORNER RETAIL PAD SITE/BUILDING**

623 E Gay Street | West Chester, PA

**EQUITY CRE****Demographic Overview (1, 3, 5-mile radius)****The right space. The right move.****CMRE** CAPITAL MARKETS  
REAL ESTATE NETWORK

Information concerning this offering is from sources deemed reliable but no warranty is made to the accuracy thereof and it is submitted subject to errors, omissions, changes of price or other conditions, prior to sale or lease or withdrawal without notice. Equity CRE is licensed in PA, NJ, & DE. Shaun Lyons, Steve Jeffries and Jake Doyle are licensed in PA.

04/16



# RETAIL AERIAL



Compliments of:

**EQUITY CRE**

Plymouth Meeting, PA ■ Philadelphia, PA ■ 610.645.7700 ■ [www.equitycre.com](http://www.equitycre.com)



# LOCATION AERIAL

