

FOR LEASE: ±3,300 SF OF GROUND FLOOR RETAIL SPACE

5959 Ridge Ave, Philadelphia, PA 19128

EQUITY CRE



PROPERTY FEATURES & DETAILS

- New construction retail/office
- 1,000 SF – 3,300 SF (can demise)
- Ideal for boutique retailers and/or creative office users
- In the heart of Roxborough, Philadelphia
- 30 residential units above
- CMX-2.5 zoning
- Experienced owner/developer to serve as Tenant's General Contractor for fit out for qualified tenants (credit, financials strength, business plan, etc).



CONTACT

NATHAN RHODES

nrhodes@equitycre.com

DIRECT 484.531.2076

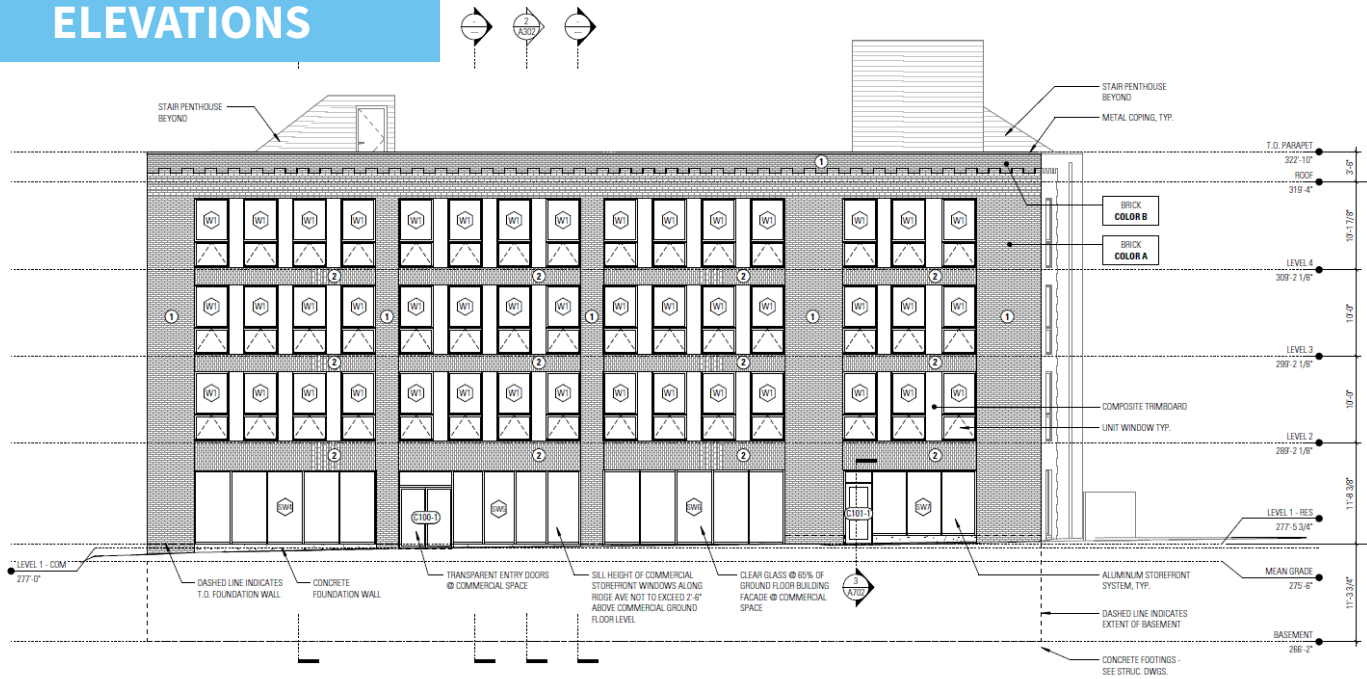
KEITH SEYMOUR

kseymour@equitycre.com

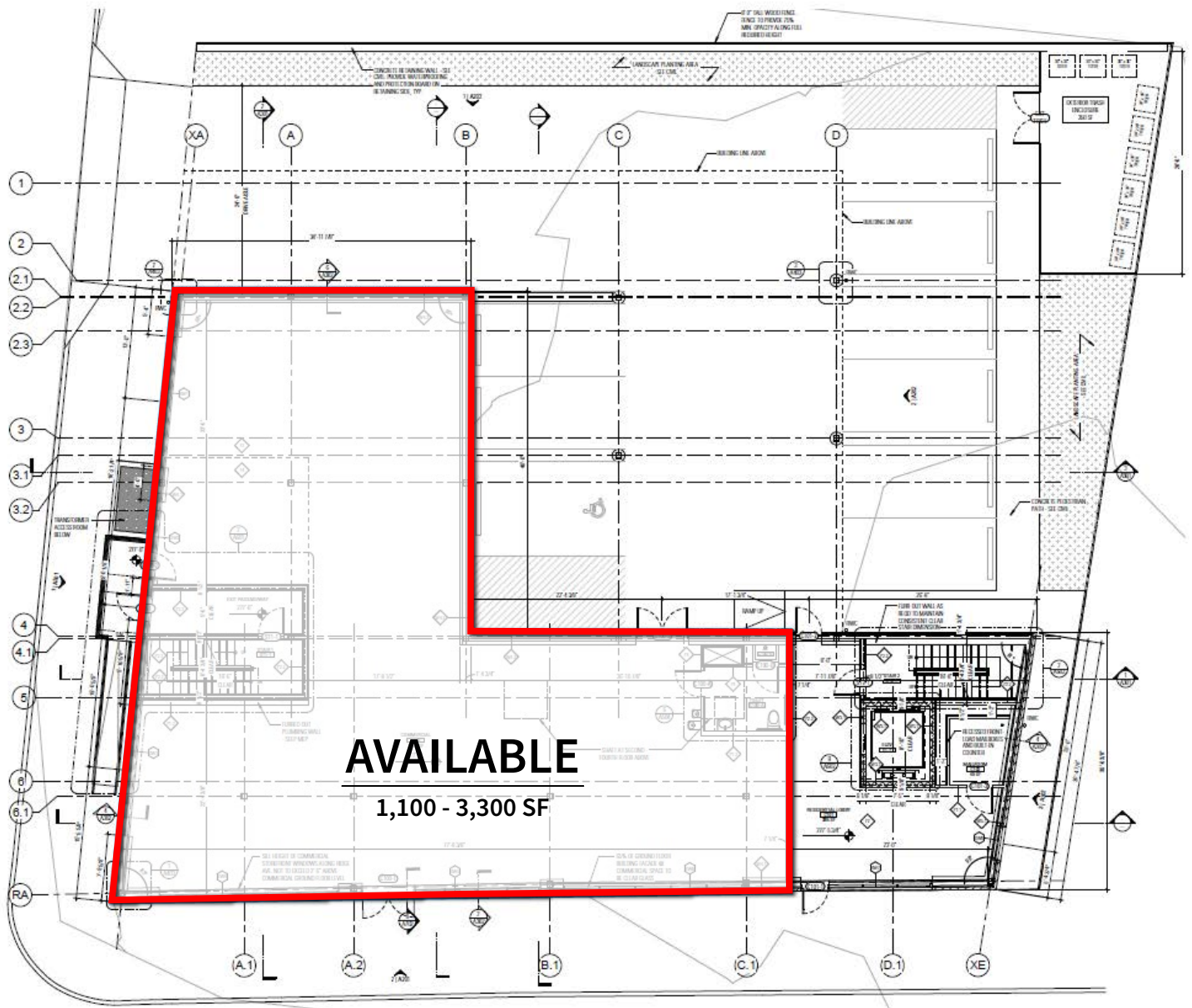
DIRECT 484.417.2249

FOR LEASE: ±3,300 SF OF GROUND FLOOR RETAIL SPACE

5959 Ridge Ave, Philadelphia, PA 19128

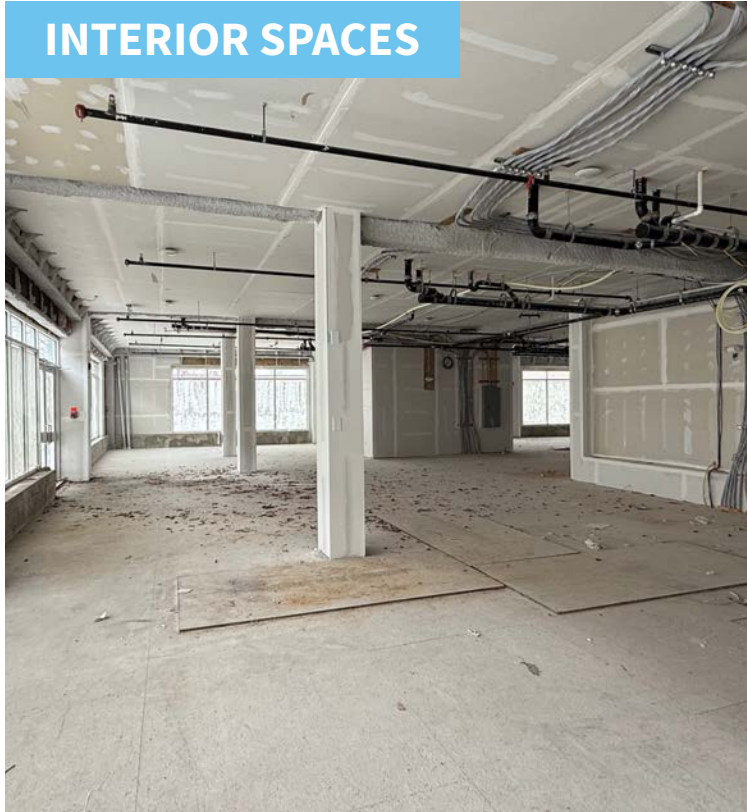
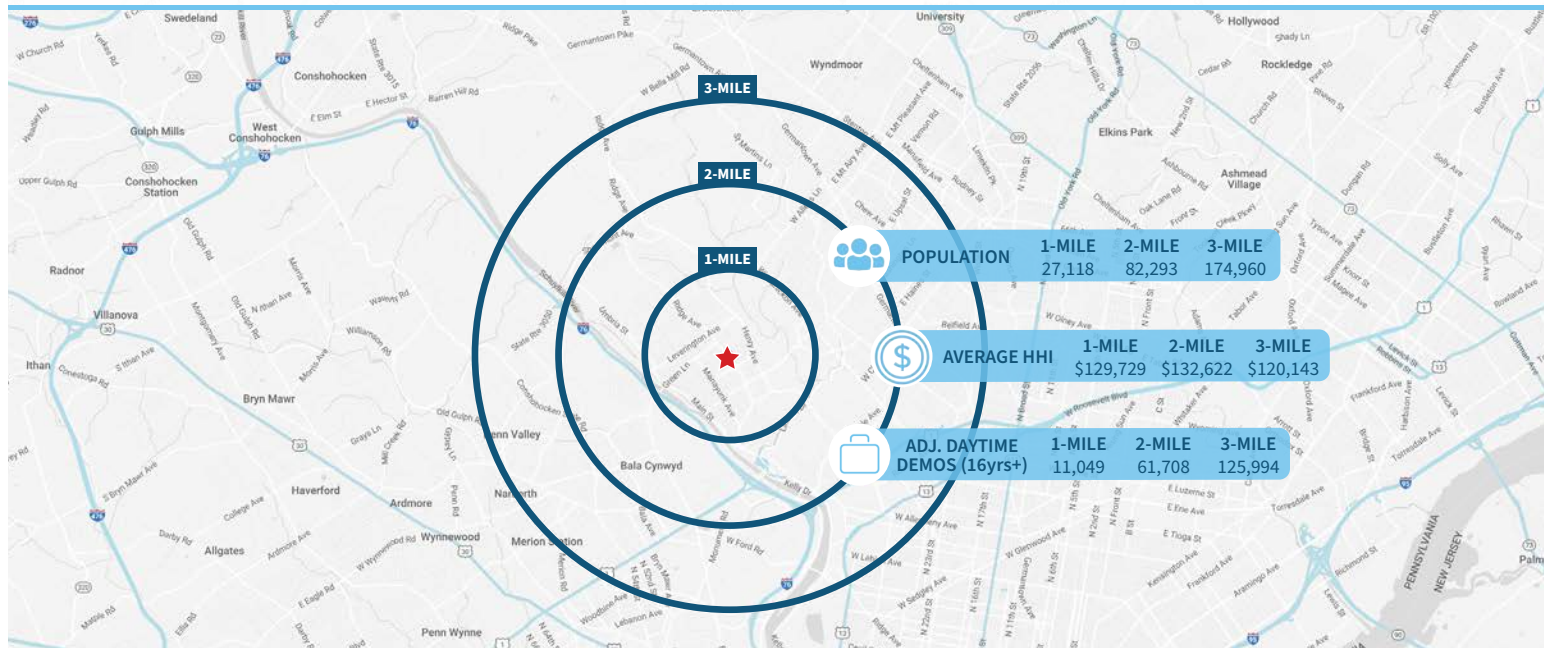
EQUITY CRE**ELEVATIONS**2 SOUTHWEST ELEVATION - RIDGE AVE.
1/8" = 1'-0"1 NORTHWEST ELEVATION - MONASTERY AVE.
1/8" = 1'-0"

FLOOR PLAN



FOR LEASE: ±3,300 SF OF GROUND FLOOR RETAIL SPACE

5959 Ridge Ave, Philadelphia, PA 19128

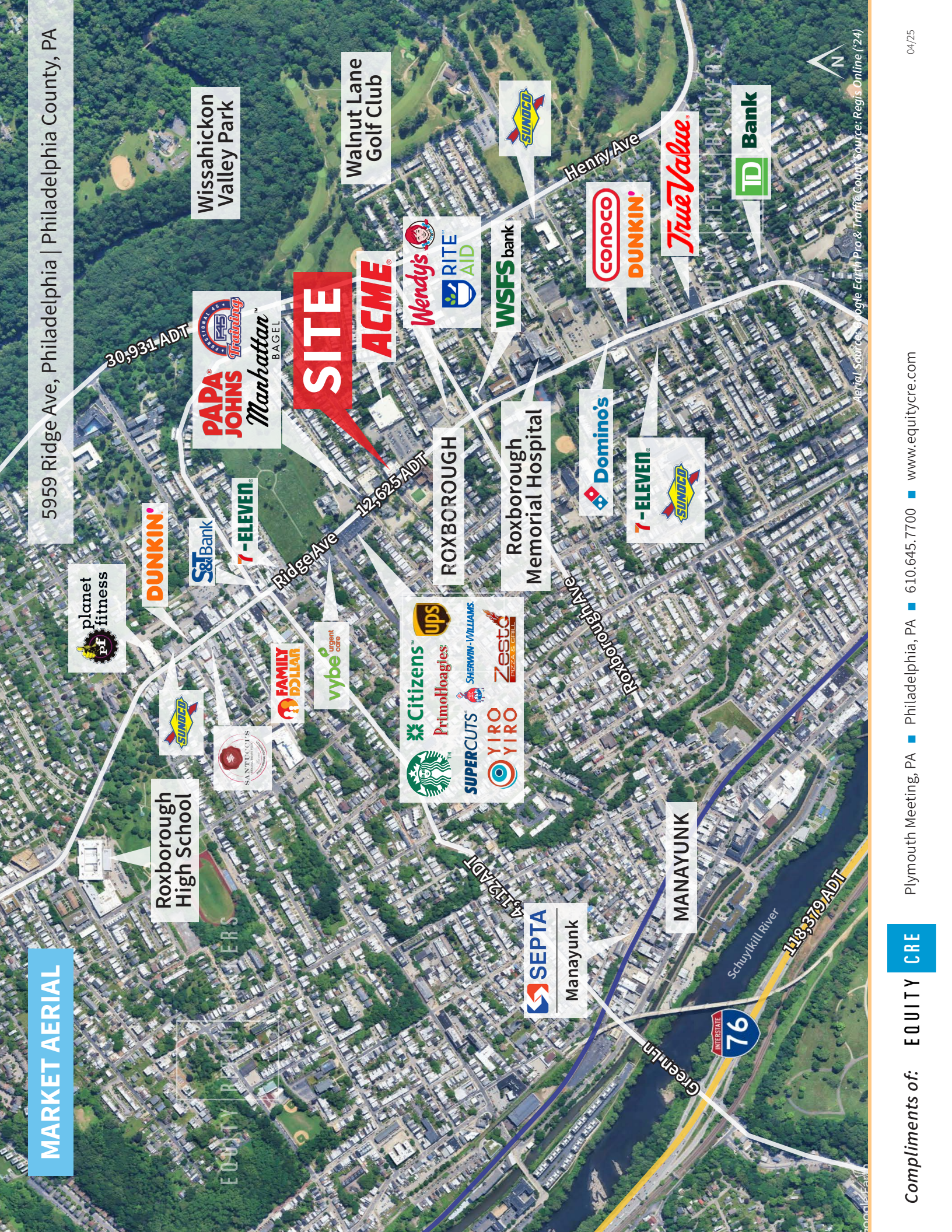
EQUITY CRE**INTERIOR SPACES****Demographic Overview (1, 2, 3-mile radius)****The right space. The right move.**

Information concerning this offering is from sources deemed reliable but no warranty is made to the accuracy thereof and it is submitted subject to errors, omissions, changes of price or other conditions, prior to sale or lease or withdrawal without notice. Equity CRE is licensed in PA, NJ, & DE. Nathan Rhodes & Keith Seymour are licensed salespersons in PA.

03/25

MARKET AERIAL

5959 Ridge Ave, Philadelphia | Philadelphia County, PA



Aerial Source: Google Earth Pro & Traffic Count Source: Regis online (24)