

FOR LEASE: ±1,200 SF RETAIL/OFFICE SPACE

2047 Chestnut St, Philadelphia, PA 19103

EQUITY CRE



LOCATION OVERVIEW

Located in Rittenhouse Square between S 20th St & S 21st St near the 22nd St Trolley subway station. Major eastbound thoroughfare, with consistent daily traffic flows from Center City towards West Philadelphia. Chestnut Street sees high vehicular and pedestrian traffic due to its central location.



PROPERTY FEATURES & DETAILS

- 1,200 SF retail/office space
- Steps to Rittenhouse Square & Central Business District
- Ideal for retail, F&B, convenience & grab-and-go concepts
- High foot traffic from nearby retail including Target, Butcher Bar, Black Turtle Coffee & PrimoHoagies
- Excellent visibility and accessibility on major streets
- Strong demand from local offices and commuters
- Glass frontage

CONTACT

WILLIAM CICCARELLI

wcicarelli@equitycre.com

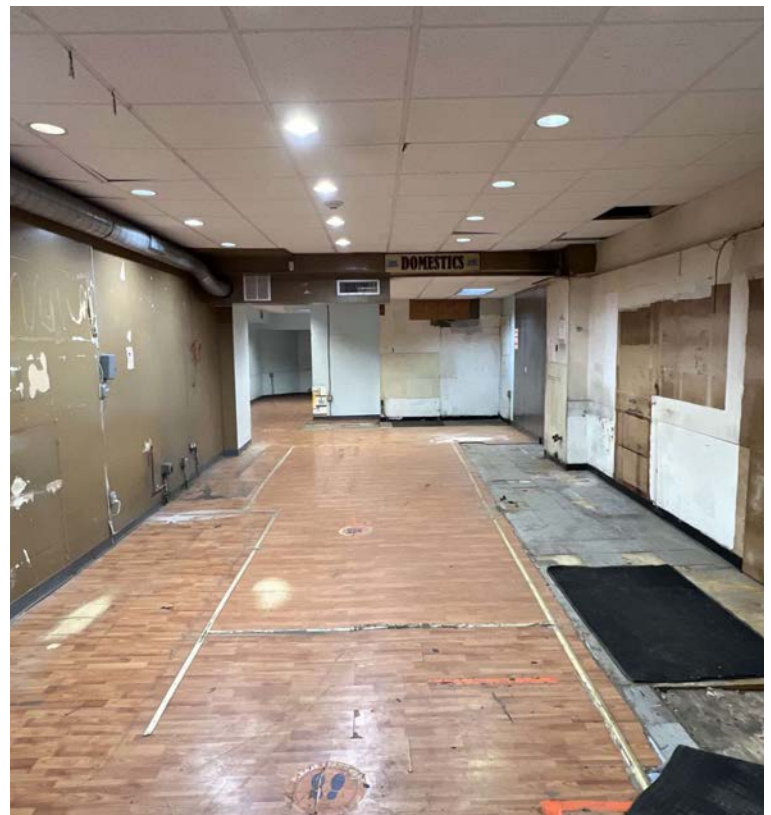
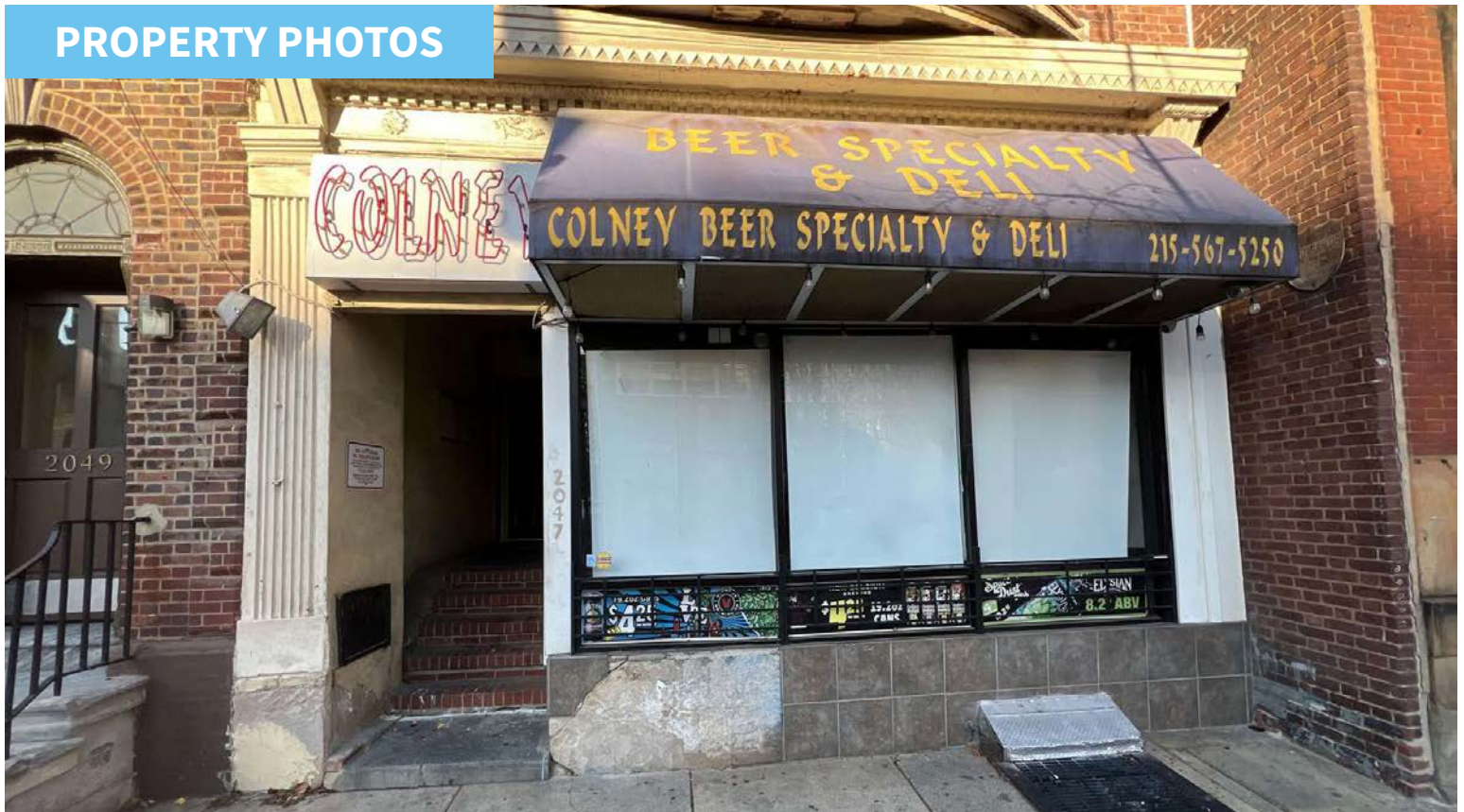
DIRECT 302.332.6987

FOR LEASE: ±1,200 SF RETAIL/OFFICE SPACE

2047 Chestnut St, Philadelphia, PA 19103

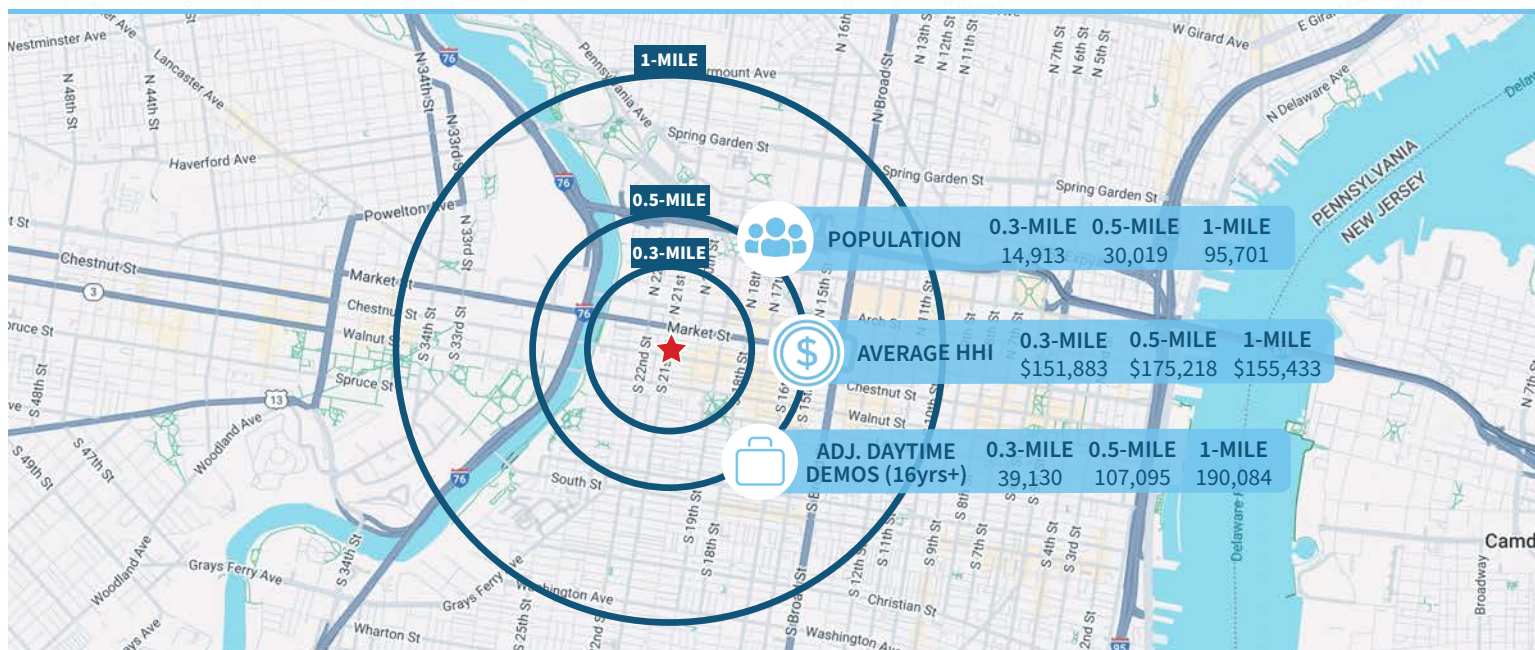
EQUITY CRE

PROPERTY PHOTOS



FOR LEASE: ±1,200 SF RETAIL/OFFICE SPACE

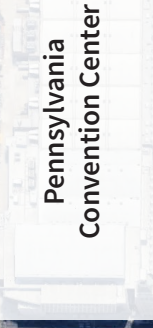
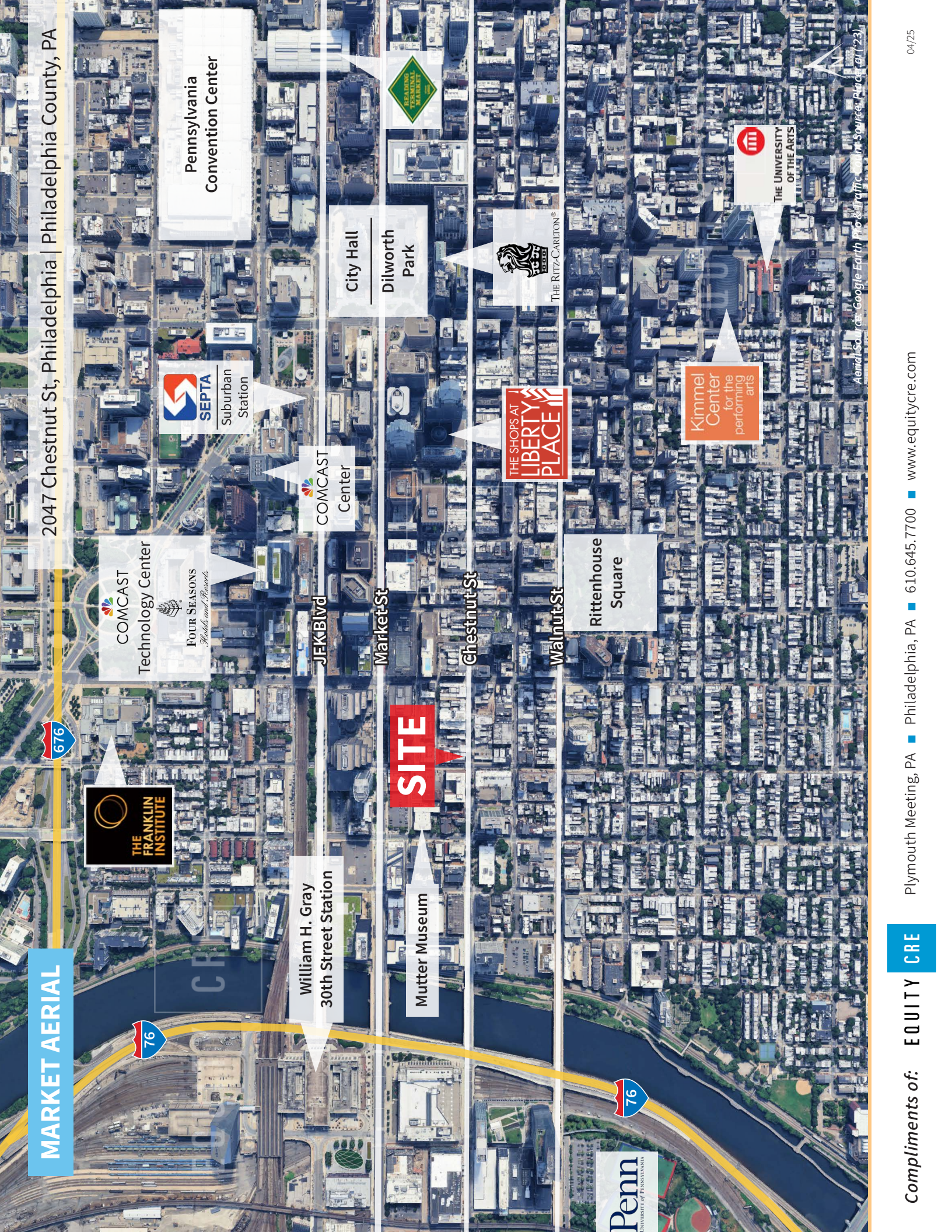
2047 Chestnut St, Philadelphia, PA 19103

EQUITY CRE**SITE AERIAL****Demographic Overview (0.3, 0.5, 1-mile radius)****The right space. The right move.****CMRE** CAPITAL MARKETS
REAL ESTATE NETWORK

Information concerning this offering is from sources deemed reliable but no warranty is made to the accuracy thereof and it is submitted subject to errors, omissions, changes of price or other conditions, prior to sale or lease or withdrawal without notice. Equity CRE is licensed in PA, NJ, & DE. William Ciccarelli is a licensed salesperson in PA & NJ.

MARKET AERIAL

2047 Chestnut St, Philadelphia | Philadelphia County, PA



William H. Gray
30th Street Station



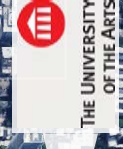
City Hall
Dilworth Park



Mutter Museum



Rittenhouse Square



Aerial Source: Google Earth Pro, 12/11/2013, Source: Place air (23)