

**FOR LEASE: 2,492 SF GROUND FLOOR RETAIL SPACE
+ 1,629 SF BASEMENT**
1350 N Front St, Philadelphia, PA

EQUITY CRE



PROPERTY FEATURES & DETAILS

- New construction retail space in the heart of Fishtown (15 residential units above)
- 2,492 SF + 1,629 SF basement
- 2 blocks from the “El” Girard Station
- Join the emergence of the Front Street Corridor
- Zoning: CMX-3
- Ceiling Height: 12’9” throughout
- Restaurant venting possible
- Dedicated outdoor seating area
- Steps from popular breweries, distilleries, top restaurants and coffee shops

CONTACT

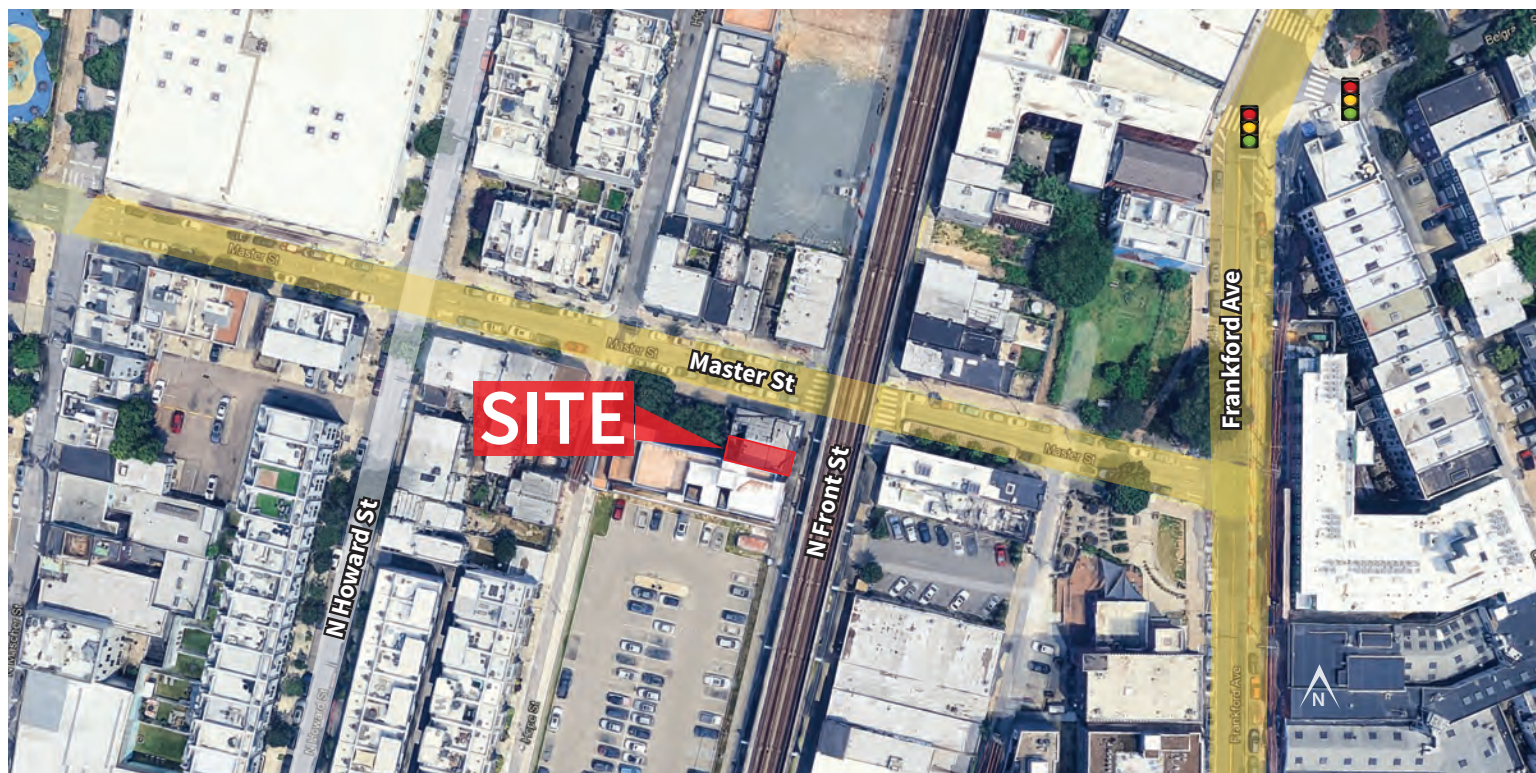
NATHAN RHODES
nrhodes@equitycre.com
DIRECT: 484.531.2076

STEVE JEFFRIES
sjeffries@equitycre.com
DIRECT: 484.531.2250

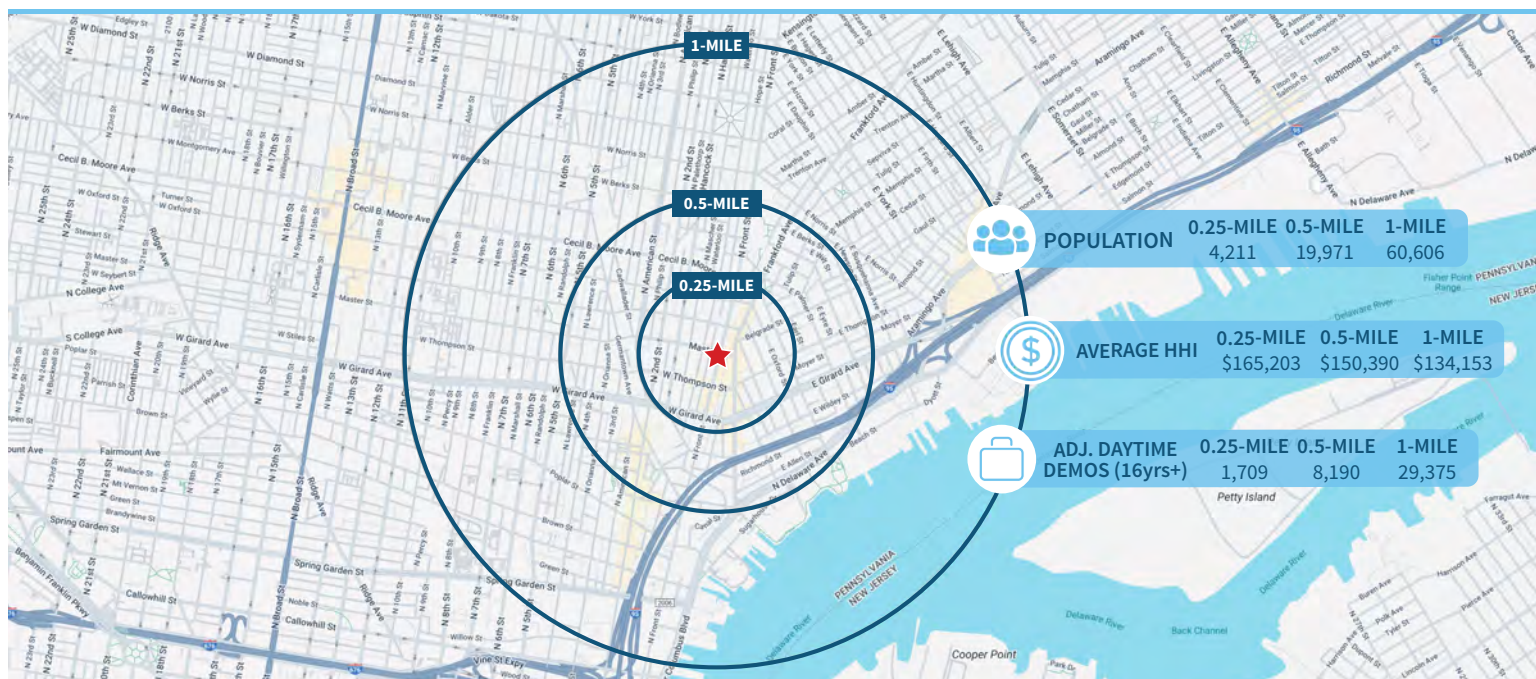
WILLIAM CICCARELLI
wcicarelli@equitycre.com
DIRECT: 484.531.2209

**FOR LEASE: 2,492 SF GROUND FLOOR RETAIL SPACE
+ 1,629 SF BASEMENT**
1350 N Front St, Philadelphia, PA

EQUITY CRE



Demographic Overview (0.25, 0.5, 1-mile radius)



The right space. The right move.



Information concerning this offering is from sources deemed reliable but no warranty is made to the accuracy thereof and it is submitted subject to errors, omissions, changes of price or other conditions, prior to sale or lease or withdrawal without notice. Equity CRE is licensed in PA, NJ, & DE. Nathan Rhodes, Steve Jeffries, and William Ciccarelli are licensed salespersons in PA.

05/25

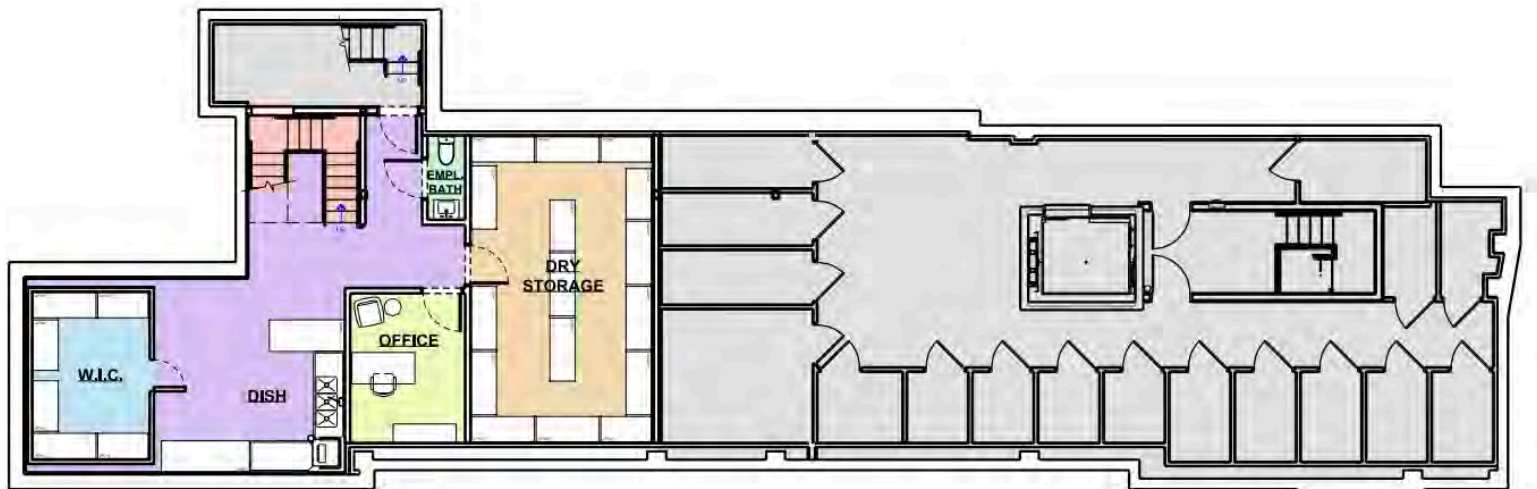
**FOR LEASE: 2,492 SF GROUND FLOOR RETAIL SPACE
+ 1,629 SF BASEMENT**
1350 N Front St, Philadelphia, PA

EQUITY CRE

FLOOR PLANS



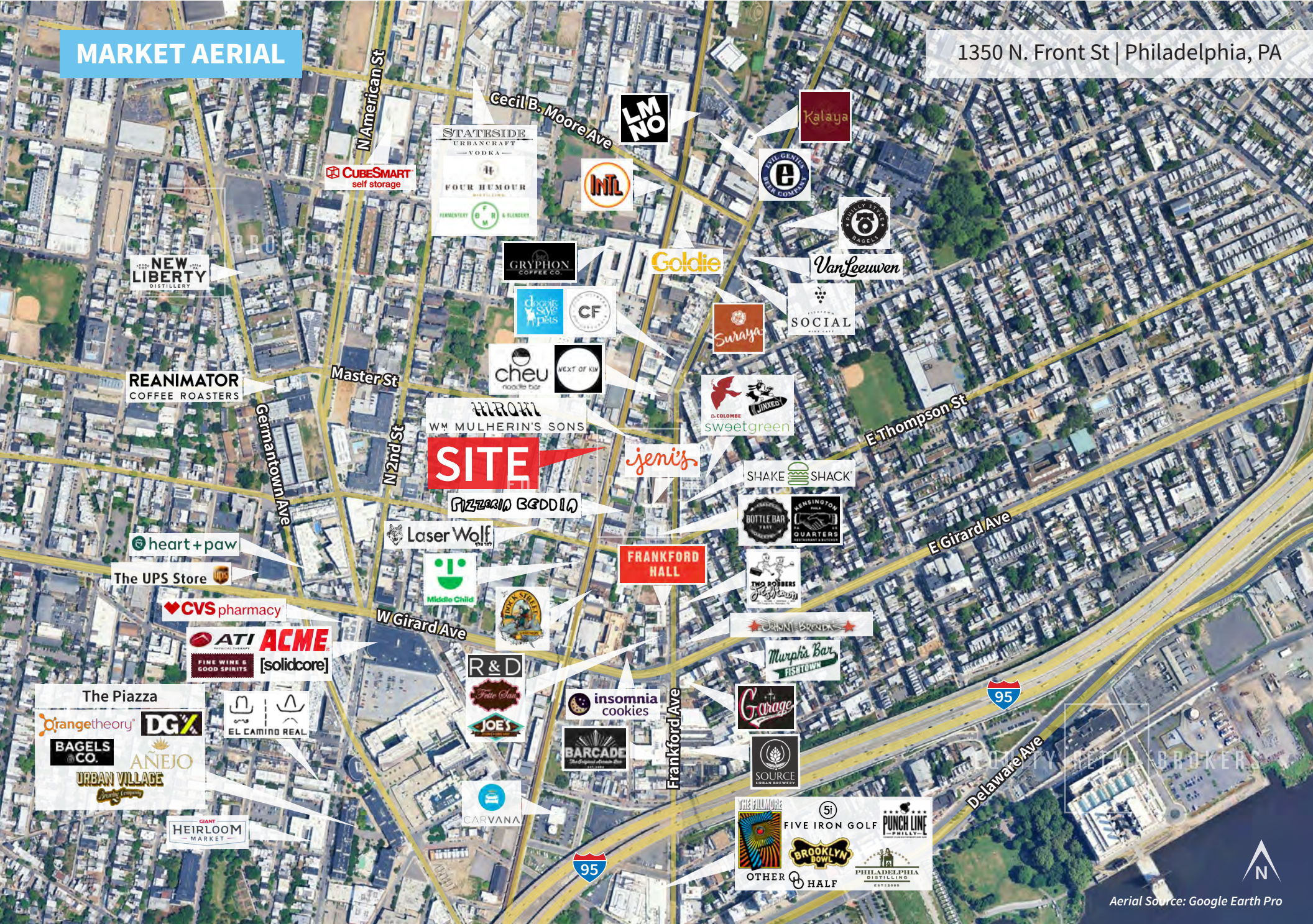
RETAIL SPACE: 2,492 SF



BASEMENT: 1,629 SF

MARKET AERIAL

1350 N. Front St | Philadelphia, PA



Aerial Source: Google Earth Pro

Compliments of:

EQUITY CRE

Plymouth Meeting, PA ■ Philadelphia, PA ■ 610.645.7700 ■ www.equitycre.com

03/25