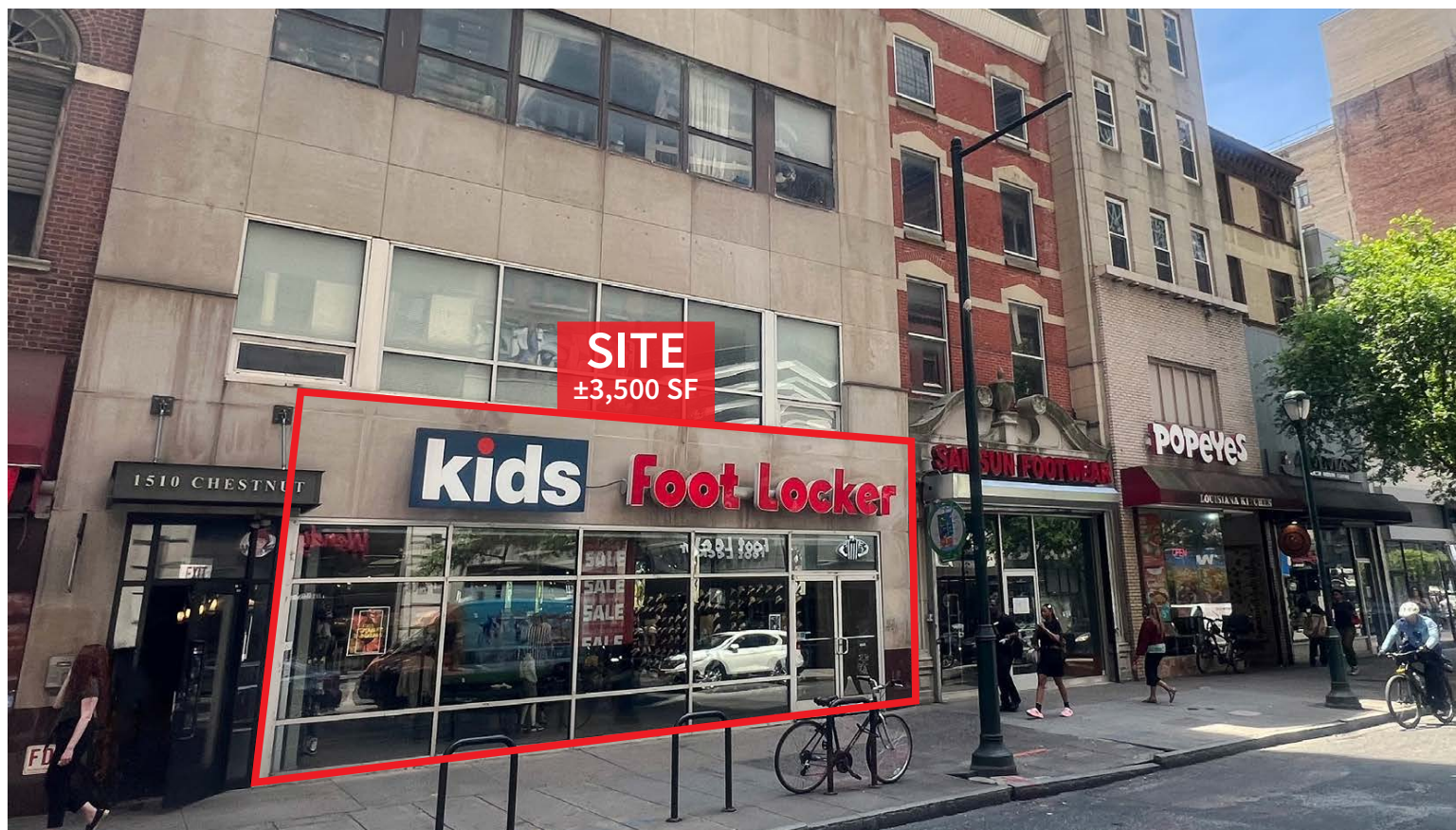


FOR LEASE: PRIME RETAIL SPACE | RITTENHOUSE SQUARE

1510 Chestnut St, Philadelphia, PA 19102

EQUITY CRE



PROPERTY FEATURES & DETAILS

- ±3,500 SF
- Prime Rittenhouse Square retail space
- Currently operated by Foot Locker Kids
- Double wide 36' frontage on Chestnut Street
- Located in the heart of Center City, steps from City Hall, The PATCO Line & Suburban Station
- Within two blocks in either direction of the following Center City density drivers: Rittenhouse Square, South Broad Office Sector & the Central Business District
- Zoning: CMX-5

CONTACT

STEVE JEFFRIES

sjeffries@equitycre.com

DIRECT 484.531.2250

CONOR TUNNO

ctunno@equitycre.com

DIRECT 484.531.2004

WILL CICCARELLI

wcicarelli@equitycre.com

DIRECT 484.531.2209



FOR LEASE: PRIME RETAIL SPACE | RITTENHOUSE SQUARE

1510 Chestnut St, Philadelphia, PA 19102

EQUITY CRE

Center City Overview

“Philadelphia’s downtown retail market has been comprised of a diverse mix of locally owned stores and national brands. While more than 90 nationals opened in Center City during the last five years, local retailers still make up more than 75% of the overall tenant mix. Downtown shops and restaurants provide a mix of entry-level and skilled jobs for city residents and help contribute to Center City’s prominence as a regional shopping and dining destination offering unique brands and experiences.”

(via: Center City District)

83%

Storefront occupancy

400,234Average daily
pedestrians (Feb 2025)**43%**Of Philadelphia jobs
located in Center City

(via: Center City District)

**WALK
SCORE****100****TRANSIT
SCORE****100****BIKE
SCORE****88****Demographic Overview (0.25, 0.5, 1-mile radius)****The right space. The right move.**

Information concerning this offering is from sources deemed reliable but no warranty is made to the accuracy thereof and it is submitted subject to errors, omissions, changes of price or other conditions, prior to sale or lease or withdrawal without notice. Equity CRE is licensed in PA, NJ, & DE. Steve Jeffries, Conor Tunno, & Will Ciccarelli are licensed salespersons in PA.

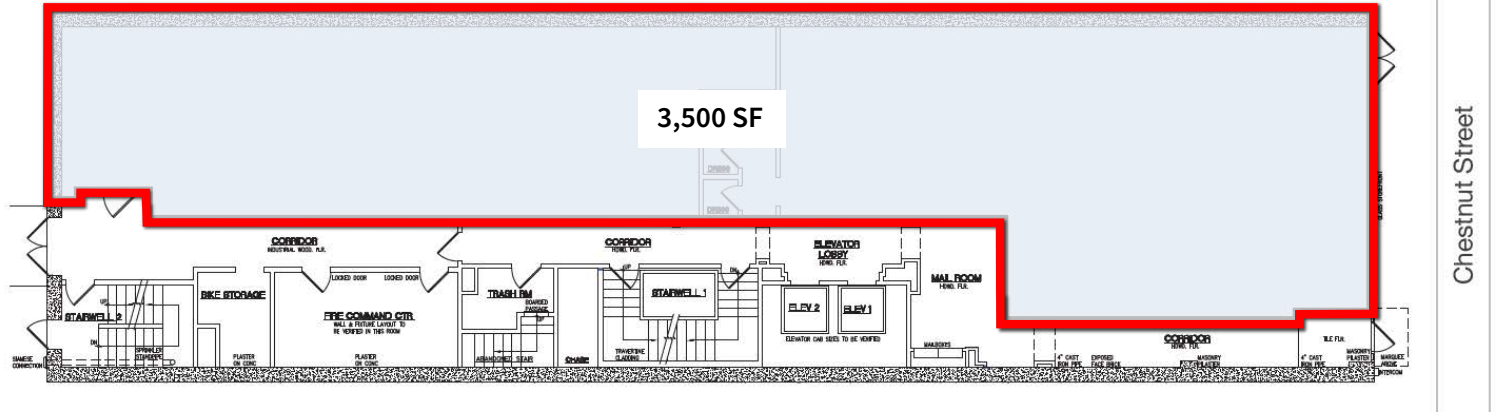
04/25

FOR LEASE: PRIME RETAIL SPACE | RITTENHOUSE SQUARE

1510 Chestnut St, Philadelphia, PA 19102

EQUITY CRE

SITE PLAN



1510 Chestnut Street | Philadelphia, PA

