

## ±2,537 SF INLINE SPACE FOR LEASE

The Avery | 1601 N. 15th Street  
Philadelphia, PA 19121

EQUITY CRE



### PROPERTY FEATURES

- Join Jimmy John's and Fat Shack
- Ground floor retail of newly renovated Student Housing Community – The Avery
- Captive, student audience
- Former restaurant space available
- Seeking food, fitness, and service-oriented uses serving the Temple community



### LOCATION DETAILS

- Located on Broad Street in the heart of Temple University academic and student housing community.
  - 7,500+ students living on or near main campus (per Temple University)
- Area retailers include AMC theaters, Qdoba, Bagels & Co (Coming Soon), Honeygrow, Raising Cane's, Chase Bank, CVS, The Fresh Grocer and more
- Main entrance just off Cecil B. Moore Ave (monument signage available)
- Short walk to Temple University Liacouras Center

### CONTACT

KEITH SEYMOUR

kseymour@equitycre.com

DIRECT 484.417.2249



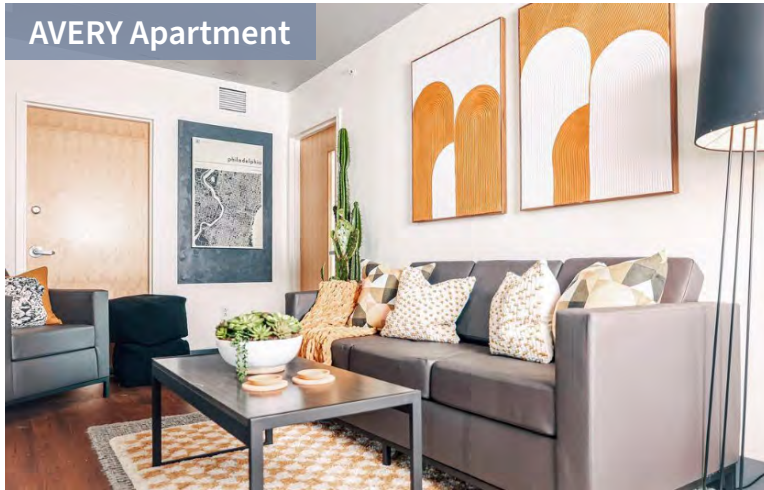
## ±2,537 SF INLINE SPACE FOR LEASE

The Avery | 1601 N. 15th Street  
Philadelphia, PA 19121

EQUITY CRE



AVERY Apartment



AVERY Lobby





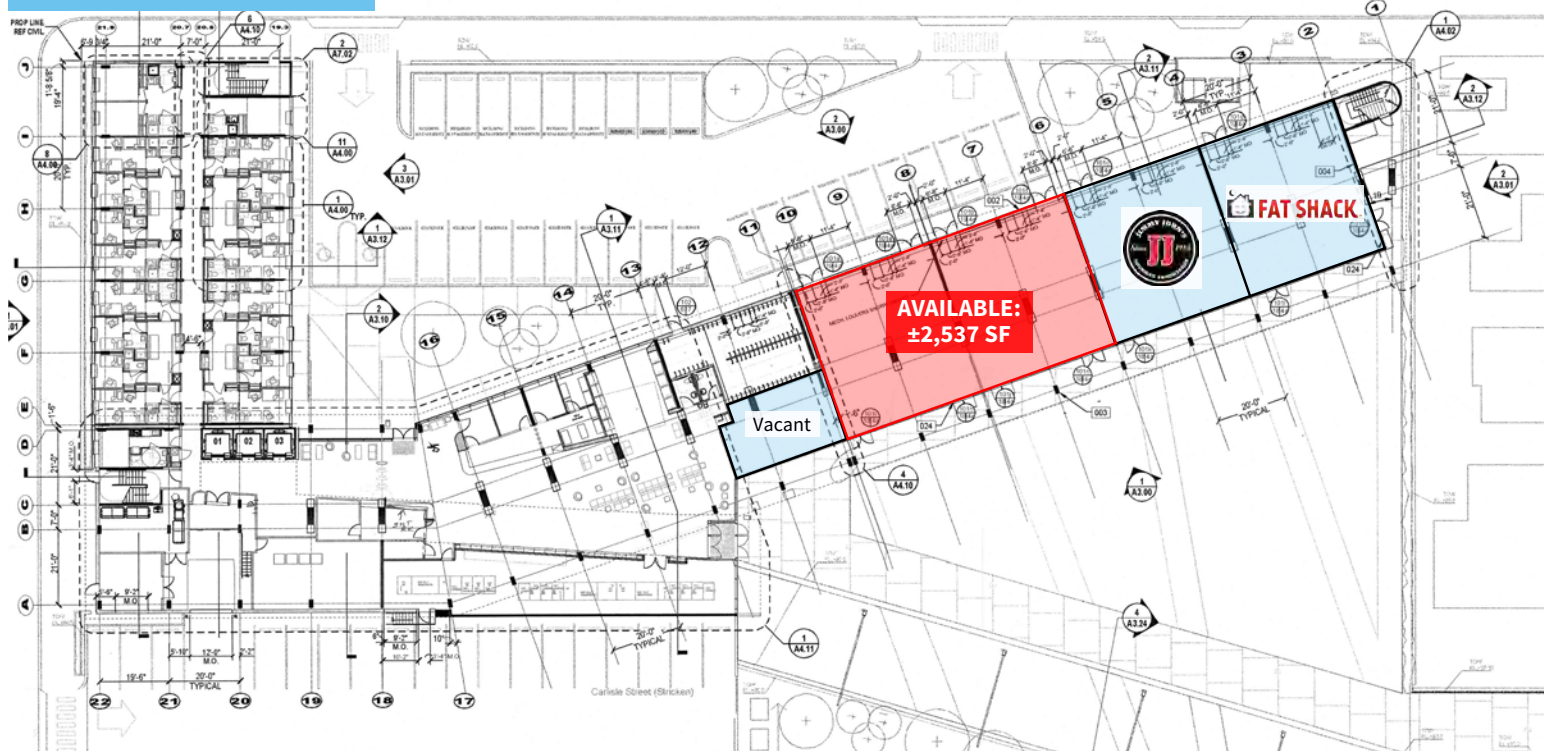
# ±2,537 SF INLINE SPACE FOR LEASE

The Avery | 1601 N. 15th Street  
Philadelphia, PA 19121

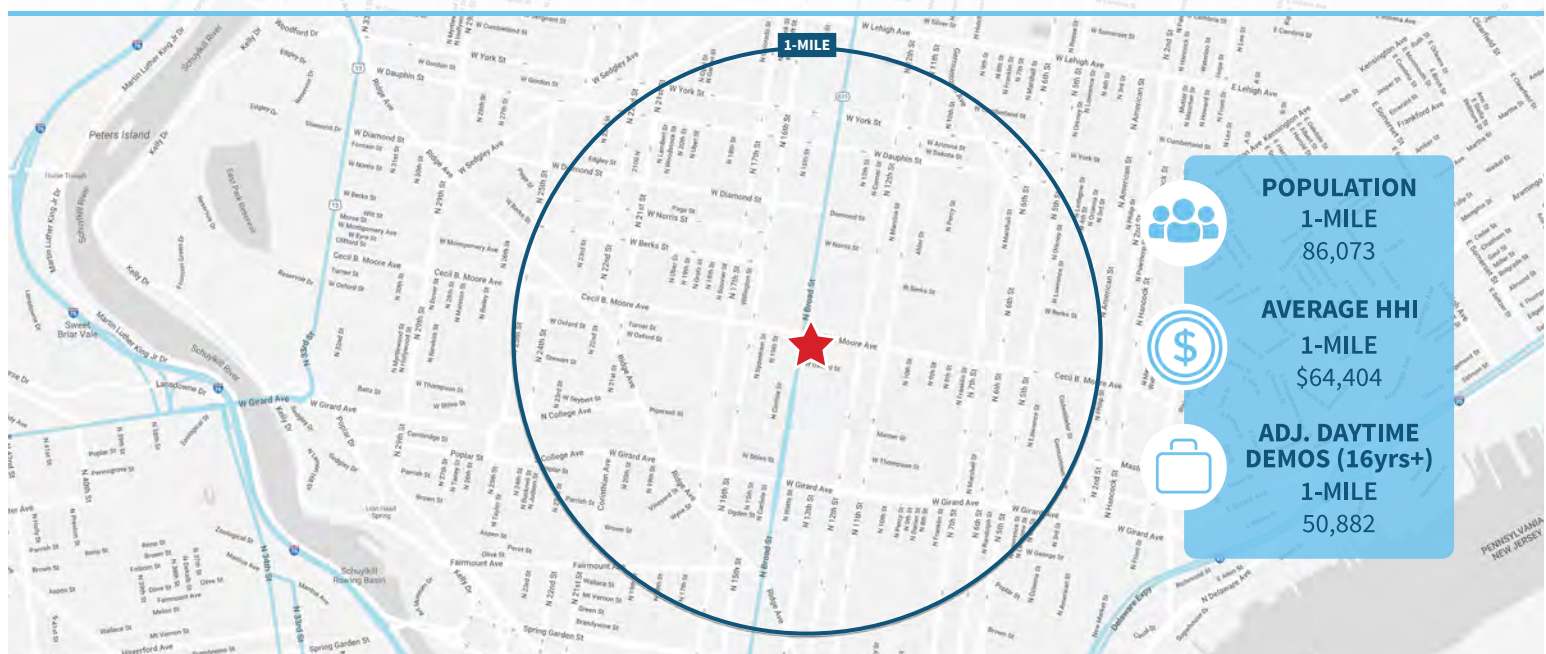
EQUITY CRE

## SITE PLAN

North 15th Street



## Demographic Overview (1 mile radius)



The right space. The right move.

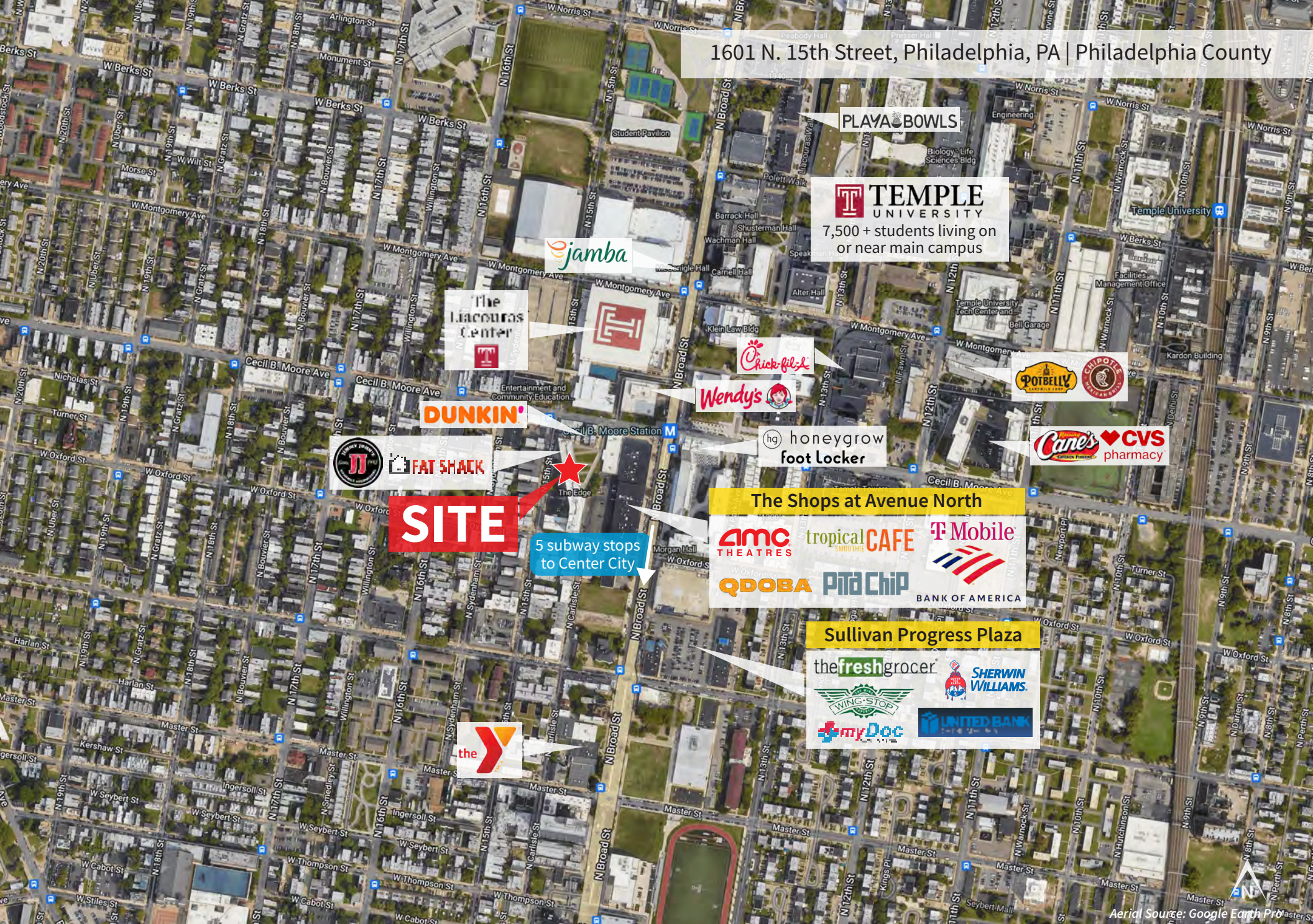


Information concerning this offering is from sources deemed reliable but no warranty is made to the accuracy thereof and it is submitted subject to errors, omissions, changes of price or other conditions, prior to sale or lease or withdrawal without notice. Equity CRE is licensed in PA, NJ, & DE. Keith Seymour is a licensed salesperson in PA, NJ, & DE.

05/25



1601 N. 15th Street, Philadelphia, PA | Philadelphia County



Aerial Source: Google Earth Pro



1601 N. 15th Street, Philadelphia, PA | Philadelphia County



Aerial Source: Google Earth Pro